

# 17TH DRESDEN SYMPOSIUM ON AUTOANTIBODIES

**The Autoantibody Spectrum: Bridging Health,  
Diagnostics, and Disease  
Dresden, September 09-12, 2025**

The Symposium is organized in appreciation of Prof. Eng M. Tan's outstanding merits  
in the field of autoimmunity

**8<sup>th</sup> International Consensus on ANA Pattern (ICAP) Workshop  
September 08, 2025**

Dresden Fair (Messe Dresden), Messering 6, Portal (Tor) 2, 01067 Dresden



**Program**

The modern Dresden Fair and the historical Stock Market Dresden: congress venue of the 17<sup>th</sup> Dresden Symposium on Autoantibodies.



# WELCOME

Dear Colleagues,

it is our pleasure to welcome you to the 17<sup>th</sup> Dresden Symposium on Autoantibodies. As organizing committee, we are excited to present a stimulating program for you. Over the years, the Dresden Symposium on Autoantibodies has become a well-attended and highly valued meeting. Every two years, Dresden is the place to be in early September for researchers interested in the advances in the full spectrum of autoantibodies. The meeting also offers an environment to meet old friends and discuss ongoing collaborations. In particular the Dresden Prize, eligible for active participants under the age of 35, provides a platform for young participants, helping to ensure the continued renewal and vitality of our autoantibody community. This also induces novel collaborations and friendships.

The symposium is preceded by the 8th ICAP Workshop. Since the start of ICAP in 2014, five out of seven previous ICAP Workshops were hosted by the Dresden Symposium on Autoantibodies and this tradition is continued in our current meeting. Next, the Dresden Symposium on Autoantibodies will feature five keynote lectures, one of which is dedicated to Professor Eng Tan, a mentor for many in the field, who passed away in 2024 at the age of 97 years. The current symposium is dedicated to his outstanding merits in the field of autoimmunity. Eight sessions will cover a diverse range of topics, including disease-oriented sessions, discussions on role of autoantibody in disease, and sessions focused on technological advances. There are four industry-organized sessions to illustrate that the close collaboration between diagnostic companies and laboratory specialists, clinicians, and basic scientists is crucial in driving the field forward. In addition, there is the EASI symposium traditionally dedicated to the harmonization of autoantibody serology. Finally, three poster sessions are scheduled during the extended lunch breaks, each with a guided poster tour with short presentations along selected posters. The poster tour on Wednesday is fully dedicated to the contributions of participants eligible for the Dresden Prize.

Networking is an essential part of any scientific meeting. This is facilitated during the social events starting with a welcome reception and barbecue on Tuesday and followed by a social dinner on Thursday. At the end of the symposium, the event will culminate in the presentation of the Dresden Prize to the winner.

We would like to express our thanks to all who supported the symposium, whether financially or with their advises. Also, we greatly appreciate the active contributions of all who shared their latest results and perspectives. We hope that the program enables you to enjoy both the scientific content and the opportunities for social interactions in Dresden's beautiful environment.

Karsten Conrad, Jan Damoiseaux, Christian Moritz

## PROGRAM

### 8<sup>th</sup> International Consensus on ANA Pattern (ICAP) Workshop

**9.30-11.00**

#### **8<sup>th</sup> ICAP WORKSHOP PART I**

Co-Chairs: Luis E.C. Andrade (São Paulo, Brazil)  
Lucile Musset (Paris, France)

09.30-09.35

Welcome and agenda (*Lucile Musset and Luís Andrade*)

09.35-10.00

Highlights on the new classification tree, new patterns, and edited information AC-1 to AC-14  
*Edward K. Chan (Gainesville, USA)*

10.00-10.10

The “Bologna case”: a challenging unclassified HEp-2 IFA pattern  
*Lindsay Brooke Boling (Bologna, Italy), Maria Infantino (Firenze, Italy)*

10.10-10.40

The educational module on AC-XX unclassified patterns  
*Werner Klotz (Innsbruck, Austria)*

10.40-11.00

Anti-MDA5 antibodies produce a distinct cytoplasmic pattern:  
a candidate AC-32?  
*Lucile Musset (Paris, France)*

11.00-11.30

COFFEE BREAK

**11.30-13.00**

#### **8<sup>th</sup> ICAP WORKSHOP PART II**

Co-Chairs: Maria Infantino (Firenze, Italy)  
Carlos Alberto von Mühlen (Encinitas, USA)

11.30-12.00

Challenges in quality control in HEp-2 IFA testing: heterogeneity  
in pattern reporting according to HEp-2 slide brands and lot-to-lot  
variation  
*Jan Damoiseaux (Maastricht, The Netherlands)*

12.00-12.30

Challenges in quality control in HEp-2 IFA testing: titer, fluorescence  
intensity, and computer-assisted software  
*Carolien Bonroy (Ghent, Belgium)*

12.30-13.00

Ten years of UK NEQAS external quality assessment on HEp-2 IFA:  
impact of ICAP and AI  
*Maria Infantino (Firenze, Italy)*

13.00-14.00

LUNCH BREAK

### 8<sup>th</sup> ICAP WORKSHOP PART III

Co-Chairs: May Choi (Calgary, Canada)  
Jan Damoiseaux (Maastricht, The Netherlands)

14.00-15.30

Has there been a change in HEp-2 IFA results  
(positive tests, patterns, titers) since COVID-19?  
*Alessandra Dellavance (São Paulo, Brazil)*

14.00-14.15

Should the ANA entry criterion for SLE +ve ANA at >1:80  
be restricted to certain AC patterns?  
*Marvin Fritzler (Alberta, Canada)*

14.15-14.30

Less may be more: when to choose to report at the Competent-level  
*Luis E. C. Andrade (São Paulo, Brazil)*

14.30-14.50

The AC-XX SG2NA pattern  
*Marvin Fritzler (Calgary, Canada)*

14.50-15.00

Artificial Intelligence and HEp-2 IFA patterns  
*May Choi (Calgary, Canada)*

15.00-15.20

Frequently Asked Questions: interesting and challenging cases  
*Maria Infantino (Firenze, Italy) and Manfred Herold (Innsbruck, Austria)*

15.20-15.30

COFFEE BREAK

15.30-16.00

### 8<sup>th</sup> ICAP WORKSHOP PART IV

Co-Chairs: Marvin Fritzler (Calgary, Canada)  
Manfred Herold (Innsbruck, Austria)

16.00-17.00

EULAR recommendations for the use and interpretation of  
laboratory diagnostic tests for the management of systemic  
autoimmune rheumatic diseases  
*Johan Rönnelid (Uppsala, Sweden) and PierLuigi Meroni (Milan, Italy)*

16.00-16.30

Final Discussion

16.30-17.00

08.00-22.00

**Registration**

10.00-10.30

**Welcome and Introduction**

Autoantibodies - Increasing importance in diagnostics and research  
*Karsten Conrad (Dresden, Germany)*

10.30-12.00

**Keynote and Memory Lectures**

Co-Chairs: Karsten Conrad (Dresden, Germany)  
Anne Puel (Paris, France)

10.30-10.55

Historical perspective of autoantibody detection: from discovery to interpretation  
*Jan Damoiseaux (Maastricht, The Netherlands)*

10.55-11.15

Eng M. Tan (1926 - 2024) – A pioneer in autoantibody research  
*Marvin J. Fritzler (Calgary, Canada)*

11.15-11.35

The ouroboros of autoimmunity  
*Anne Puel (Paris, France)*

11.35-12.00

Why we develop autoimmune diseases  
*Yehuda Shoenfeld (Herzeliya, Israel)*

12.00-13.30

LUNCH BREAK – POSTER AND EXHIBITION VIEWING  
**Posters A1 – A46:** Guided poster presentation of selected posters (Methodical aspects and strategies of the serological diagnosis of autoimmune diseases) chaired by Ulrich Sack (Leipzig, Germany)

13.30-15.30

**THE COMPLEX AUTOIMMUNE RESPONSE IN RHEUMATOID ARTHRITIS**

Co-Chairs: Günter Steiner (Vienna, Austria)  
Johan Rönnelid (Uppsala, Sweden)

13.30-13.50

Autoantibodies in rheumatoid arthritis – rheumatoid factor, antimodified protein antibodies and beyond  
*Günter Steiner (Vienna, Austria)*

13.50-14.10

It's time to revise RA classification by changing the RF and ACPA scores  
*Lieve van Hoovels (Leuven, Belgium)*

14.10-14.25

Role of IgA ACPA in the pathogenesis of RA  
*Ulrike Steffen (Erlangen, Germany)*

14.25-14.40

Shift in perspective: autoimmunity protecting against rheumatoid arthritis  
*Ricard Holmdahl (Solna, Sweden)*

Anti-type II collagen antibodies associate with high levels of inflammation at RA diagnosis but with good clinical outcome  
*Johan Rönnelid (Uppsala, Sweden)*

14.40-14.55

Prediction and prevention of rheumatoid arthritis:  
Where are we in 2025?  
*Michael Mahler (Vista, USA)*

14.55-15.10

Optimizing the hemagglutination-mediator for rapid detection of anti-citrullinated protein antibodies in rheumatoid arthritis patients  
*Massis Krekorian (Nijmegen, The Netherlands)*

15.10-15.20

Inflammation rather than anti-citrullinated protein antibodies associates with cardiovascular mortality in RA: Insights from rheumatoid arthritis and coronary artery disease cohorts  
*Veerle F.A.M. Derksen (Leiden, The Netherlands)*

15.20-15.30

COFFEE BREAK

15.30-16.00

**ADVANCING AUTOIMMUNITY PATIENT CARE THROUGH  
EARLY DIAGNOSIS, INNOVATIVE METHODOLOGY, AND  
NOVEL BIOMARKERS**  
(sponsored by Werfen)

**16.00- 17.30**

Co-Chairs: May Choi (Calgary, Canada)  
Daniele Ielo (Milan, Italy)

Welcome and introduction  
*Daniele Ielo (Milan, Italy)*

16.00-16.10

Advancing early diagnosis and prediction in autoimmunity:  
innovative strategies and the role of biomarkers  
*Michael Mahler (Vista, USA)*

16.10-16.30

Importance of biomarkers in the diagnosis and management of interstitial lung disease  
*May Choi (Calgary, Canada)*

16.30-16.50

Recent advances in the serological domain of antiphospholipid syndrome diagnosis  
*Mar Petit (Barcelona, Spain)*

16.50-17.10

Question and discussion  
Moderator *Daniele Ielo (Milan, Italy)*

17.10-17.30

**WELCOME RECEPTION WITH TRADITIONAL AND  
VEGETARIAN BARBECUE IN THE INDUSTRIAL EXHIBITION –  
POSTER AND EXHIBITION VIEWING**

**17.45-22.00**

08.30-09.00

**Keynote Lecture**

introduced by Lieve van Hoovels (Aalst, Belgium)

The potential role of the likelihood ratio approach to support diagnosis and classification of Autoimmune Diseases

*Xavier Bossuyt (Leuven, Belgium)*

09.00-10.30

**AUTOIMMUNE NEUROLOGICAL DISEASES**

(sponsored by EUROIMMUN Medizinische Labordiagnostika AG)

Co-Chairs: Harald Prüß (Berlin, Germany)  
Romana Höftberger (Vienna, Austria)

09.00-09.30

Laboratory diagnostic testing for myasthenia gravis in the era of cell-based assays

*Adrian Budhram (London, Canada)*

09.30-10.00

Autoantibodies in neuropsychiatric diseases – from mechanisms to novel treatments

*Harald Prüß (Berlin, Germany)*

10.00-10.30

Neuropathological findings and implications for the diagnosis of paraneoplastic syndromes

*Romana Höftberger (Vienna, Austria)*

10.30-11.15

COFFEE BREAK – POSTER AND EXHIBITION VIEWING

11.15-12.50

**THE COMPLEXITY OF ANTI-PHOSPHOLIPIDE SYNDROME AND SYSTEMIC LUPUS ERYTHEMATOSUS**

Co-Chairs: Lieve van Hoovels (Aalst, Belgium)  
Xavier Bossuyt (Leuven, Belgium)

11.15-11.35

The 2023 ACR/EULAR APS classification criteria: the starting point to move on

*Maria Orietta Borghi (Milan, Italy)*

11.35-11.55

The probable role of the likelihood ratio approach in diagnosing/ classification of APS

*Lieve van Hoovels (Aalst, Belgium)*

11.55-12.10

Appropriateness and sustainability of aPL testing

*Maria Infantino (Firenze, Italy)*

12.10-12.20

Anti-PS/PT antibodies: results of a very long follow-up in large series of unselected patients

*Martina Fabris (Udine, Italy)*

12.20-12.30

Even low levels of anticardiolipin antibodies are associated with pregnancy-related complications: A monocentric cohort study

*Ilona Hromadnikova (Prague, Czech Republic)*



Comparing the performance of a newly developed anti-dsDNA antibody 6-Plex assay with other anti-dsDNA antibody detection methods: Farr-RIA, CLIA and ELIA. <i>Maaïke Cockx (Leuven, Belgium)</i>	12.30-12.40
Broad autoantibody profiles reveal novel diagnostic markers and HLA-linked self-reactivities in systemic lupus erythematosus <i>Denis Lagutkin (Stockholm, Sweden)</i>	12.40-12.50
LUNCH BREAK – POSTER AND EXHIBITION VIEWING <b>Posters B1 – B34</b> Guided poster presentation of selected posters of the Candidates for the Dresden Prize chaired by Dirk Reinhold (Magdeburg, Germany)	12.50-14.30
<b>EASI FORUM MEETING</b> (EASI members only) Location: Meeting room “Palaiszimmer”	<b>13.10-14.25</b>
<b>AUTOANTIBODIES IN SARD-ASSOCIATED INTERSTITIAL LUNG DISEASES (ILD)</b> Co-Chairs: Jan Damoiseaux (Maastricht, The Netherlands) Ingrid Lundberg (Stockholm, Sweden)	<b>14.30-16.00</b>
Autoantibodies in myositis associated ILD <i>Ingrid Lundberg (Stockholm, Sweden)</i>	14.30-14.50
Phenotypic clusters of anti-MDA5 antibody-positive dermatomyositis: Prediction of rapid progressive ILD <i>May Y. Choi (Calgary, Canada)</i>	14.50-15.10
Immunoprecipitation–mass spectrometry: an emerging reference method for autoantibody detection in myositis and systemic sclerosis <i>Xavier Bossuyt (Leuven, Belgium)</i>	15.10-15.30
Epitope mapping of Anti Ro52 antibodies in antisynthetase syndrome and inflammatory myositis <i>Dimitrios Bogdanos (Larissa, Greece)</i>	15.30-15.45
Predictive value of myositis antibodies: role of semiquantitative classification and positivity for more than one autoantibody <i>Arno Hänninen (Turku, Finland)</i>	15.45-16.00
COFFEE BREAK	16.00-16.30

**16.30-18.00**

**IgG4-MEDIATED AUTOIMMUNE DISEASES**

Co-Chairs: Martin Blüthner (Karlsruhe, Germany)  
Luis E.C. Andrade (São Paulo, Brazil)

16.30-16.50

Impact of IgG4 antibodies in autoimmune neurology  
*Romana Höftberger (Vienna, Austria)*

16.50-17.10

The diagnostic and pathogenic role of IgG4 autoantibodies  
*Inga Koneczny (Vienna, Austria)*

17.10-17.25

IgG4 anti-GBM antibodies - laboratory challenges and solutions  
*Renate G. van der Molen (Nijmegen, The Netherlands)*

17.25-17.40

Fab glycosylation in IgG4 autoimmune diseases:  
A clue to pathogenicity?  
*Francisca Faber (Vienna, Austria)*

17.40-17.50

Animal model of anti-NMDAR encephalitis by active immunization:  
Insights into the neuro-immunobiology and therapeutic interventions  
*Estibaliz Maudes (Göttingen, Germany)*

17.50-18.00

Novel recombinant human monoclonal autoantibody IgG1 and  
IgG4 targeting the human nicotinic acetylcholine receptor  
*Simon D. Lytton (Munich, Germany)*

**NOVEL AUTOANTIGENIC TARGETS AND EMERGING TECHNOLOGIES FOR AUTOANTIBODY DETECTION**  
(sponsored by MEDIPAN GmbH)

Co-Chairs: Dirk Roggenbuck (Dahlewitz, Germany)  
Dimitrios Bogdanos (Larissa, Greece)

The autoantigenic target glycoprotein 2 is a novel fecal marker for gut microbiota dysbiosis and systemic inflammation  
*Dirk Roggenbuck (Senftenberg, Germany)*

Comparison of ICAP competence level AI-based ANA pattern interpretation with expert reading  
*Jonas Schmidt (Singen, Germany)*

Use of AI-based algorithms for pattern interpretation of tissue-based indirect immunofluorescence tests  
*Rico Hiemann (Senftenberg, Germany)*

*Helicobacter pylori* as a trigger of ANA?  
*Dimitrios Bogdanos (Larissa, Greece)*

Discussion

COFFEE BREAK – POSTER AND EXHIBITION VIEWING

**IMMUNE-RELATED ADVERSE EVENTS (irAE) DUE TO IMMUNE CHECKPOINT INHIBITORS (ICI) AND AUTOIMMUNE NEUROLOGIC DISEASES**

Co-Chairs: Carlos von Mühlen (Encinitas, USA)  
Ulrich Sack (Leipzig, Germany)

Checkpoint inhibition and autoimmune diseases  
*Claudia Günther (Dresden, Germany)*

Immunogenicity of checkpoint inhibitors: an Italian multicenter study  
*Teresa Carbone (Potenza, Italy)*

Neurological Immune-related Adverse Events (NirAE) due to immune checkpoint inhibitors: a laboratory approach  
*Martina Fabris (Udine, Italy)*

Glycosylation in the variable regions of MuSK and AChR autoantibodies: Effects on binding and pathogenicity in myasthenia gravis  
*Miriam L. Fichtner (Berlin, Germany)*

Live versus fixed cell-based assay for anti-MOG antibodies: discrepancies and usefulness of titration  
*David Goncalves (Lyon, France)*

**08.30-10.00**

08.30-08.50

08.50-09.10

09.10-09.30

09.30-09.50

09.50-10.00

10.00-11.00

**11.00-12.30**

11.00-11.20

11.20-11.40

11.40-12.00

12.00-12.10

12.10-12.20

- 12.20-12.30 Improving diagnostics in seronegative myasthenia gravis in the D-A-Ch region through cell-based assays  
*Marlene Wolfsgruber (Vienna, Austria)*
- 12.30-14.00 LUNCH BREAK – POSTER AND EXHIBITION VIEWING  
**Posters C1-C36:** Guided poster presentation of selected posters (Autoantibodies in systemic and organ specific autoimmune diseases) chaired by Thorsten Krieger

**14.00-15.30 EASI SYMPOSIUM: AUTOANTIBODIES AND IMMUNOLOGICAL MARKERS IN THE FOLLOW-UP OF AUTOIMMUNE DISEASES**

Co-Chairs: Jan Damoiseaux (Maastricht, The Netherlands)  
Carolien Bonroy (Ghent, Belgium)

- 14.00-14.20 Autoantibodies and biomarkers in follow-up of autoimmune gastritis  
*Nicola Bizzaro (Udine, Italy)*
- 14.20-14.40 Autoantibodies and biomarkers in follow-up of celiac disease  
*Hetty Bontkes (Amsterdam, The Netherlands)*
- 14.40-15.00 Autoantibodies and biomarkers in follow-up of systemic lupus erythematosus  
*Yves Renaudineau (Toulouse, France)*
- 15.00-15.20 An international multicenter retrospective analysis of repeated anti-ENA testing in ANA-associated rheumatic diseases  
*Carolien Bonroy (Ghent, Belgium)*

15.20-15.30 Final discussion

15.30-16.00 COFFEE BREAK

**16.00-18.00 NATURAL, PROTECTIVE AND PATHOGENIC AUTOANTIBODIES**

Co-Chairs: Gabriela Riemekasten (Lübeck, Germany)  
Inga Konecny (Vienna, Austria)

- 16.00-16.20 Physiological and pathophysiological functions of autoantibodies against G protein-coupled receptors  
*Gabriela Riemekasten (Lübeck, Germany)*
- 16.20-16.40 Emerging immunoregulatory functions of DFS70/LEDGF: implications for understanding the possible protective nature of DFS (AC-2) autoantibodies  
*Carlos Casiano (Loma Linda, USA)*
- 16.40-17.00 Pathogenic autoantibodies in neurologic diseases  
*Christian P. Moritz (Saint-Étienne, France)*

Autoimmunity in eosinophilic airway diseases: a shift from paradigm  
*Manali Mukherjee (Hamilton, Canada)*

17.00-17.20

Compensatory role of natural autoantibodies in systemic autoimmune disease-related autoantibody profiles  
*Timea Berki (Pécs, Hungary)*

17.20-17.30

Autoantibodies to dense fine speckled 70 (DFS70) antigen limit neutrophil extracellular trap formations  
*Kayla Zhang (Hamilton, Canada)*

17.30-17.40

Antibodies directed to the angiotensin II type 1 receptor induce endothelial dysfunction in systemic sclerosis  
*Reza Akbarzadeh (Lübeck, Germany)*

17.40-17.50

Profiling of novel autoantibodies for prediction of disease activity in ANCA-associated vasculitis  
*Charlotta Preger (Stockholm, Sweden)*

17.50-18.00

**Departure by shuttle buses from the congress venue to the Social Dinner venue**

18.15-18.30

**Social Dinner**

**19.00-22.00**

08.30-10.00

**THE CULTURE OF AUTOIMMUNE TESTING: OVERTESTING AND UNDERTESTING IN TIMES OF RISING AUTOIMMUNITY AND POLYAUTOIMMUNITY**

(sponsored by Thermo Fisher Scientific)

Co-Chairs: Nina Olschowka (Freiburg, Germany)  
Marvin Fritzler (Calgary, Canada)

08.30-08.40

Welcome and introduction  
*Raul Castellanos (Madrid, Spain)*

08.40-09.00

The global autoimmunity burden: Trends, biomarkers and the early detection dilemma  
*Marvin J. Fritzler (Calgary, Canada)*

09.00-09.40

Autoantibody testing debate: Do we need more or less testing?  
• Uncovering the unseen to enhance early diagnosis  
*María Luisa Mearin (Leiden, The Netherlands)*  
• Undirected diagnostic expansion and its impact on patients and society  
*Jan Damoiseaux (Maastricht, The Netherlands)*

09.40-10.00

Panel Discussion and Q&A  
*Moderator: Raul Castellanos*  
*Panel: Jan Damoiseaux, María Luisa Mearin and Marvin J. Fritzler*

10.00-10.30

COFFEE BREAK – POSTER AND EXHIBITION VIEWING

10.30-12.15

**NOVEL THERAPIES FOR AUTOIMMUNE DISEASES AND BIOMARKERS FOR THERAPY RESPONSE**

Co-Chairs: Martin Aringer (Dresden, Germany)  
Dirk Reinhold (Magdeburg, Germany)

10.30-10.50

AlloNK cell infusions in refractory SARDs  
*Carlos A. von Mühlen (Encinitas, USA)*

10.50-11.10

CAR T-cell therapy in autoimmune diseases: current stage and perspectives  
*Gerson Keppeke (São Paulo, Brazil)*

11.10-11.30

Below CAR T cells – news on therapies targeting B and plasma cells  
*Martin Aringer (Dresden, Germany)*

11.30-11.45

Biomarkers for treatment response in rheumatoid arthritis: Insights from EU-funded projects  
*Daniela Sieghart (Vienna, Austria)*

11.45-12.00

The pathological role of a novel fibroblast-like synoviocyte targeting autoantibody in therapy response in a mouse model of arthritis  
*Sukayna F. Fadlallah (Hasselt, Belgium)*

Autoantibodies and biomarkers for treatment response in systemic lupus erythematosus and sub-analysis in lupus nephritis  
*Yves Renaudineau (Toulouse, France)* 12.00-12.15

LUNCH BREAK – POSTER AND EXHIBITION VIEWING 12.15-13.30

**ADVANCE IN AUTOANTIBODY DISCOVERY: NEW BIOMARKERS AND DETECTION TECHNOLOGIES** 13.30-15.35

Co-Chairs: Christian P. Moritz (Saint-Étienne, France)  
Manali Mukherjee (Hamilton, Canada)

Mapping the autoantibody response: towards a systemic understanding via autoantigenomics  
*Christian P. Moritz (Saint-Étienne, France)* 13.30-13.50

The wider spectrum of autoimmune analyses using orphan autoantibodies  
*May Choi (Calgary, Canada)* 13.50-14.10

Pathogenic autoantibodies in Podocytopathies  
*Pierre Ronco (Paris, France)* 14.10-14.30

Italian guidelines for the immunological diagnosis of autoimmune liver diseases: a step forward from EASL guidelines  
*Nicola Bizzaro (Udine, Italy)* 14.30-14.45

Diagnostic advancements in Dermatitis herpetiformis: The role of neo-epitopes and multiparametric antibody profiling  
*Torsten Matthias (Wendelsheim, Germany)* 14.45-15.10

Anti-integrin  $\alpha\text{v}\beta 6$  IgG antibody as a diagnostic and prognostic marker in ulcerative colitis  
*Eleftheria Pertsinidou (Uppsala, Sweden)* 15.10-15.25

The interplay between novel markers for rheumatoid arthritis: Experience from a large cohort of 60,046 patients  
*Michael Mahler (Vista, USA)* 15.25-15.35

**Dresden Prize Award Ceremony & Conclusion** 15.40-15.55

FAREWELL COFFEE BREAK 15.55-16.40

## POSTER EXHIBITION

### A    **METHODOLOGICAL ASPECTS AND STRATEGIES OF THE SEROLOGICAL DIAGNOSIS OF AUTOIMMUNE DISEASES** (\*poster presentation)

**A1**    Made to aid in the diagnosis of autoimmune hepatitis: Comparison of fluorescence enzyme immunoassay to immunoblot and immunofluorescence detecting LKM-1 antibodies. *Hanna Berkner, Anja Voreck-Schütz, Andreas Cerny, David Semela, Joachim Mertens, Guido Stirnimann, Melanie Hoffmann, Gaia Deleonardi, Cinzia Tesei and Benedetta Terziroli Beretta-Piccoli (Freiburg, Germany)*

**A2\***    Towards harmonization of autoantibody detection in relation to Paraneoplastic Neurological Syndromes (PNS): a European survey on laboratory practices. *Matthijs Oyaert, Marco Schreurs, David Goncalves, Dina Patel, Ravishankar Sargur, Carol Stanley, Monica Probst, Marie-Agnès Durey, Jan Damoiseaux, Carolien Bonroy (Ghent, Belgium)*

**A3**    Serological analysis of gluten-related antibodies in idiopathic neuropathies and cerebellar ataxia. *Maxine D. Rouvroye, Janna Warendorf, Alexander Vrancken, Filip Eftimov, Luuk Wieske, Catharina G. Faber, Janneke G.J. Hoeijmakers, Jan Damoiseaux, Bart van de Warrenburg, Judith van Gaalen, Renate van der Molen, Gerd Bouma, Hetty J. Bontkes (Amsterdam, The Netherlands)*

**A4**    What do physicians know about ICAP? Differences in ANA HEp-2 IFA pattern interpretation between rheumatologists and non-rheumatologists in Argentina. *Orlando Gabriel Carballo, Leticia Yamamoto, Carlos von Mühlen (Encinitas, USA)*

**A5**    Controlling background effects in anti-ganglioside antibody testing. *Renato A. Cotti, Andrea Ochsner, Christian-Benedikt Gerhold, Thomas Schuster, Christina Bauer (Schönenbuch, Switzerland)*

**A6**    Detection of anti-MAG antibodies with ELISA – The impact of different detergents on performance and stability. *Anna Melone, Marie-Eve Überschlag, Johannes Schneider, Aaron Voith, Alina Thürig, Sara V. Bantleon, Sabina Deutschmann, Goran Milojkovic, Xavier Derville, Christina Bauer, Renato Cotti, Christian-Benedikt Gerhold, Thomas Schuster (Schönenbuch, Switzerland)*

**A7**    Reproducibility of autoantibody titer assessment on HEp-2 cells in Brazilian laboratories. *Wilson de Melo Cruvinel, Igo de Oliveira Neves, Diogo Casagrande Nunes de Souza, Gabriel Antônio Ferreira Alves, Leonardo Luiz Borges, Adriana Vieira, Juliana Rodrigues, Juliana Barroso, Roselena Montenegro, Livia Soares, Leonardo Vasconcellos, Álvaro Pulchinelli, José Poloni, Vinícius Biasoli, Luiz Eduardo Coelho Andrade (Goiás, Brazil)*



**A8** Comparison of anti-NMDAR antibody titers in cerebrospinal fluid and serum measured by cell-based assay and immunohistochemistry. *Marco W. J. Schreurs, Sanae Boukhrissi, Juliette Brenner, Mariska Nagtzaam, Alessandro Dario Confettura, Andrea Deerberg, Sandra Saschenbrecker, and Maarten J. Titulaer (Lübeck, Germany)*

**A9\*** Development of a prototype Bridge ELISA for detection of anti-nephrin autoantibodies. *Andrea Deerberg, Sina Rhein, Christiane Radzinski, Swantje Mindorf, Viola Borchardt-Lohölter, Felicitas E. Hengel, Silke Dehde, Nicola M. Tomas, Tobias B. Huber (Lübeck, Germany)*

**A10** Analytical performance of the HEP-2 substrate diagnostic kit for ANA as an initial step in the evaluation of a novel fully automated IFA analyzer in a laboratory in England. *Jason Sillitoe, Ewa Fiorentino-Rozek, Gerber Gomez, Christian Fischer, Caroline Wilson (Eysins, Switzerland)*

**A11\*** From promise to practice: Assessing middleware in autoimmune labs through an Italian survey. *Emirena Garrafa, Rocco Negri, Valentina Muraro, Lucia Terzuoli, Barbara Casolari, Nicola Bizzaro, Brunetta Porcelli on behalf of the CdS-AI SIPMeL (Brescia, Italy)*

**A12** Analytical performance of a fully automated multiplexed microarray immunoassay for the simultaneous detection of fifteen autoantibodies associated with connective tissue diseases in a reference laboratory in Southern France. *Guillaume Nardella, Gerber Gomez, Christian Fischer, Claire Monat (Eysins, Switzerland)*

**A13\*** A machine learning algorithm based on a 15-autoantibody profile by a novel fully automated multiplexed microarray immunoassay for the diagnosis of autoimmune connective tissue diseases. *Gerber Gomez, Yipeng Cheng, Kristiana Nita, Michael Hausmann, Christian Fischer, Yasemin Ataman-Önal (Eysins, Switzerland)*

**A14** Analytical performance of a novel, fully automated multiplexed microarray immunoassay prototype for the simultaneous detection of autoantibodies to GBM, PR3, and MPO: A multicenter evaluation. *Natalia Swierczynska, Ruairidh Armour, Anthony Yau, Enn Rusi, Mark Hooper, Jason Sillitoe, Caroline Wilson, Paula Griffiths, Tariq El-Shanawany, Faye Sims, Gerber Gomez, Christian Fischer, Michael Hausmann, Helen Laird (Eysins, Switzerland)*

**A15** Clinical utility of the detection of anti-DFS70 autoantibodies by a novel fully automated multiplexed microarray immunoassay for the assessment of autoimmune connective tissue diseases. *Gerber Gomez, Jose Santiago, Kristiana Nita, Christian Fischer, Makoto Miyara (Eysins, Switzerland)*

TUESDAY,  
SEPTEMBER 9  
(12.30) until  
FRIDAY,  
SEPTEMBER 12  
(13.30)

**A16** Immunomonitoring in severe COVID-19 patients with anti-IFN-1 autoantibodies. *Marine Jaillard, David Goncalves, Paul Bastard, Guillaume Monneret, Fabienne Venet (Lyon, France)*

**A17\*** Detection of myasthenia gravis autoantibodies using an innovative cell-based immunofluorescence assay. *Dominik Jäger, Francesca Andreetta, Ornella Simoncini, Renato Mantegazza, Luise Zech, Rose Kohlie, Ario Mirian, Michael Nicolle, Pamela Edmond, Adrian Budhram, Viola Borchardt-Lohölter, and Erik Lattwein (Lübeck, Germany)*

**A18** Comparison of four different methods for determination of anti-dsDNA antibodies. *Gordana Juricic, Vedrana Drvar, Katarina Gugo (Pula, Croatia)*

**A19** Evaluation of a new protein microarray for the multiplex detection of ANA in a retrospective study. *Martin Kintrup, Christiane Herzog, Michel Hennenberg, Bettina Becker (Planegg, Germany)*

**A20** Interference of cold agglutinins and/or cryoglobulins in antibody diagnostics for kidney transplantation: a case study. *Steven C. Koetzier, Joyce J.B.C. van Beers, Jan G.M.C. Damoiseaux, Christina E.M. Voorter, Lotte Wieten (Maastricht, The Netherlands)*

**A21** Frequency of ANA positivity and distribution of ANA patterns within the Croatian population referred for ANA testing. *Andrea Tešija Kuna, Ema Vinceljak, Ines Vukasočić, Tamara Sušić (Zagreb, Croatia)*

**A22** Novel peptide epitopes of NC16A BP180 in the diagnostics of bullous pemphigoid. *Simon D. Lytton, Christine Prodingner, Damian Meyersburg, Birgit Mussnig, Roland Lang, Roberto Maglie, Florian Anzengruber, Emiliano Antiga, Russell P. Hall, Johann W. Bauer (Munich, Germany)*

**A23** Generation of monoclonal antibodies against tTG and mTG neo epitopes. *Torsten Matthias, Steffen Hess, Patricia Wusterhausen (Wendelsheim, Germany)*

**A24** Anti-dsDNA autoantibodies – a 5 year review of first time positive results. *Alexandra Mendes, Isabel Fonseca, Patrícia Silva, Ana Torinha, Ana Matos, Raquel Serra (Lisboa, Portugal)*

**A25** Detection of GFAP autoantibodies using a new cell-based indirect immunofluorescence assay. *Swantje Mindorf, Marco Kai, Jerome Honnorat, Pauline Dumez, Géraldine Picard, Corinna Bien, Dominik Jäger (Lübeck, Germany)*

**A26\*** Evaluation of a cell-based assay for the standardized determination of autoantibodies against IgLON5. *Marco W. J. Schreurs, Sanae Boukhrissi, Suzanne Franken, Yvette Crijnen, Alessandro Dario Confettura, Swantje Mindorf, Sandra Saschenbrecker, Maarten J. Titulaer (Lübeck, Germany)*

**A27** Evaluation of a tissue-based assay for KLHL11 autoantibodies in paraneoplastic neurological syndromes. *Swantje Mindorf, Marco Kai, Jerome Honnorat, Géraldine Picard, Anne-Laurie Pinto, Adrian Budhram, Lidia Sabater, Josep Dalmau, Dominik Jäger (Lübeck, Germany)*

**A28** Sensitive and specific detection of anti-IgLON5 autoantibodies using a standardized cell-based assay. *Lidia Sabater, Carles Gaig, Francesc Graus, Mercedes Alba, Alessandro Dario Confettura, Swantje Mindorf, Sandra Saschenbrecker, Josep Dalmau, Swantje Mindorf (Lübeck, Germany)*

**A29\*** Validation of F-actin on novel EUROLINE liver blot, a Dutch multicenter study. *Leontine Mulder, Jan Damoiseaux, Caroline Bijlens, Inez-Anne Haagen, Annemieke Lekkerkerker, Michiel Heron, Sjana Koss, Nadine Pouw, Sharon Veenbergen, Bart-Jan Kroesen (Enschede, The Netherlands)*

**A30\*** Evaluation of a Microblot-Array for the detection of autoantibodies associated with autoimmune liver diseases. *Manca Ogrič, Nika Boštic, Tinka Švec, Saša Čučnik (Ljubljana, Slovenia)*

**A31** Analytical comparison of different methods for the detection of autoantibodies to extractable nuclear antigen. *Manca Ogrič, Nika Boštic, Tinka Švec, Saša Čučnik (Ljubljana, Slovenia)*

**A32** Comparative evaluation of two commercially available anti-double-stranded DNA immunoassays for the diagnosis of systemic lupus erythematosus. *Nina Olschowka, Maresa Grundhuber (Freiburg, Germany)*

**A33** Cerebrospinal fluid oligoclonal bands testing patterns in autoimmune central nervous system neurological diseases. *Lizhen Ong, Sunil Sethi (Singapore) Abstract withdrawn at short notice.*

**A34\*** Evaluation of anti-nuclear antibody (ANA) patterns and their associations with autoimmune disease biomarkers. *Vincent Ricchiuti, Min Kyung Lee, David Alfego, Ajay Grover (Dublin, USA)*

**A35** Newly developed ChLIA for detection of fluid calprotectin in serum. *Marko Silvestric-Scheel, Kathrin Hoffmann, Victor Herbst, Viola Borchardt-Lohölter, and Pierre Lukas (Tyne & Wear, UK)*

TUESDAY,  
SEPTEMBER 9  
(12.30) until  
FRIDAY,  
SEPTEMBER 12  
(13.30)

**A36** Newly developed ELISA for detection of circulating calprotectin in serum and plasma. *Kathrin Hoffmann, Victor Herbst, Marko Silvestric-Scheel, Viola Borchardt-Lohölder, and Pierre Lukas (Tyne & Wear, UK)*

**A37** Role of assay-specific cut-offs for measurement of fecal calprotectin using chemiluminescence assays. *Marko Silvestric-Scheel, Viola Borchardt-Lohölder, Pierre Lukas, and Etienne Cavalier (Tyne & Wear, UK)*

**A38\*** Celiac Insider website: A diagnostic tool for improving celiac disease awareness and patient empowerment. *Bianca den Drijver, Anja Walter, Mercè Tena, Caroline Dalibert (Cornellà de Llobregat, Spain)*

**A39** Evaluation of BioCLIA CTD screen as a primary care screening test: Comparative analysis with immunofluorescence and EliA CTD screen. *Laura Riesco Dávila, Israel Nieto Ganan, Mercè Tena (Cornellà de Llobregat, Spain)*

**A40** Interference between nuclear homogeneous and centromere indirect immunofluorescence antinuclear antibody patterns. *Lilla Szabó, Beáta Tóth, Angelika Kovalcsik, Róza Földesi, Gáborné Török, Péter Antal-Szalmás, Gábor Nagy (Debrecen, Hungary)*

**A41** Harmonization of the antinuclear antibodies (ANA) HEp-2 test in Chile: workshops, courses, guidelines, working group and EQA for the national network of laboratories. *Carolina Valenzuela, A.M. Castillo, P. Santis, L. Galdames, C. Cuevas, H. Moscoso (Santiago, Chile)*

**A42** Comparative evaluation of IIF, ELISA and Immunoblot in detecting autoantibodies in ANA positive patients. *Tsvetelina Velikova, Stanislava Zlateva, Marinela Kalcheva, Betina Angelova, Monika Boncheva, Poli Dimcheva, Petar Stoilov, Antoaneta Mihova, Blagovesta Pencheva, Rosen Mihaylov (Sofia, Bulgaria)*

**A43** Impact of preanalytical interference on detection of antinuclear antibodies (ANA) and antibodies to extractable nuclear antigens (ENA). *Ines Vukasović, Matusina Marko, Jakšić Una, Tešija Kuna Andrea, Tamara Sušić (Zagreb, Croatia)*

**A44** Temperature, pH dependency and activity of microbial transglutaminase and its gliadin cross-linked neo-complexes. *Patricia Wusterhausen, Torsten Matthias (Wendelsheim, Germany)*

**A45** GAD autoantibody detection comparison between multiple immune-based methods with the focus on avoiding Hook-effect occurrence. *Sijia Zou, Guo Zhou, Ziren Chang, Zhixin Li, Xuefang Ren, Wenli Bai, Fei Pan, Zhongbao Chan, Shenghua Zong (Nanjing, China)*

**A46** Correlation of anti-DFS70 autoantibody with HEp-20-10 cell immunofluorescence assay for nuclear dense fine speckled pattern AC-2. *Ilana Heckler, Breann Losiewicz, Min Kyung Lee, Monique Marszalik, Vincent Ricchiuti (Dublin, USA)*

**A47** Investigation of Antinuclear Antibodies Using the Indirect Immunofluorescence Method in Baku City. *Ruqyya Samadzada, Goncha Abbasova, Yaver Hacisoy, Ramin Bayramli (Baku, Azerbaijan)*

## **B CANDIDATES FOR THE DRESDEN PRIZE** (\*presented as short lecture, \*\*poster presentation)

**B1\*\*** Cellular immunophenotypes are associated with heart-reactive antibody profiles in patients hospitalized for acute heart failure. *Boshra Afshar, Maximilian Bauser, Dora Pelin, Sahel Shemshadi, Hanna Hepp, Wafaa Al Hassan, Dennis Göpfert, Thomas Kerkau, Elisa Kaiser, Janna Lamers, Jannika Pätkau, Fabian Kerwagen, Gustavo Ramos, Ulrich Hofmann, Stefan Frantz, Stefan Störk, Caroline Morbach, Niklas Beyersdorf (Würzburg, Germany)*

**B2** Are there differences in the structural lipids of the different B-cell types that influence the pathogenesis of IgG4-autoimmune disorders? *Diego Asensio-Wandosell, Marina Mané-Damas, Mario Losen, Pilar Martinez-Martinez (Maastricht, The Netherlands)*

**B3\*\*** A new immunofluorescence assay allows the sensitive detection of anti-cytosolic 5'-nucleotidase 1A autoantibodies. *Fleur Brinkman, Isa Verlangen, Ger J.M. Pruijn (Nijmegen, The Netherlands)*

**B4** A novel fiber optic SPR biosensor for the specific detection of high avidity anti-dsDNA antibodies to aid in the diagnosis of systemic lupus erythematosus. *Maaïke Cockx, Annelies Dillen, Lotte Put, Lauren Van Ammel, Liesel Swerts, Simon Vermeylen, Nick Geukens, Dragana Spasic, Xavier Bossuyt, Jeroen Lammertyn (Leuven, Belgium)*

**B5** Challenges of anti-dsDNA autoantibody measurement. *Maaïke Cockx, Doreen Dillaerts, Bianca Convents, Jill Witvrouwen, Xavier Bossuyt (Leuven, Belgium)*

**B6\*** Comparing the performance of a newly developed anti-dsDNA antibody 6-Plex assay with other anti-dsDNA antibody detection methods: Farr-RIA, CLIA and EliA. *Maaïke Cockx, Ben Neven, Doreen Dillaerts, Kirsten Vandeput, Jeroen Vandersmissen, Isa Van Horenbееck, Gertjan Gysembergt, Els Houben, Elke Thijs, Stijn Jughmans, Nick Geukens, Carolien Bonroy, Ellen De Langhe, Xavier Bossuyt (Leuven, Belgium)*

TUESDAY,  
SEPTEMBER 9  
(12.30) until  
FRIDAY,  
SEPTEMBER 12  
(13.30)

**B7\*\*** Mass spectrometry-based analysis of rheumatoid factor. *Jonas De Leeuw, Birthe Michiels, Rita Derua, Tom Dehaemers, Doreen Dilaerts, Maaïke Cockx, Glynis Frans, Sebastien Christian Carpentier, Patrick Verschueren, Xavier Bossuyt (Leuven, Belgium)*

**B8** A new recombinant and native calprotectin formulation: a step forward towards standardization of circulating calprotectin assays. *Roxane Deley, E. Rooms, B. Vanhove, M. Infantino, B. Vander Cruyssen, X. Bossuyt, Lieve Van Hoovels (Aalst, Belgium)*

**B9** EDTA plasma for measuring circulating calprotectin: a matrix to avoid! *Roxane Deley, E. Rooms, B. Vanhove, M. Infantino, B. Vander Cruyssen, X. Bossuyt, Lieve Van Hoovels (Aalst, Belgium)*

**B10\*** Inflammation rather than anti-citrullinated protein antibodies associates with cardiovascular mortality in RA: Insights from rheumatoid arthritis and coronary artery disease cohorts. *Veerle Derksen, Jane Lindschou, Per Winkel, Graciela E. Delgado, Emma C. de Moel, Tom W.J. Huizinga, Winfried März, Janus C. Jakobsen, Annette H.M. van der Helm-Van Mil, René E.M. Toes, Sofia Ajeganova, Christian Gluud, Jan Leipe, Diane van der Woude, on behalf of the CLARICOR Trial Group and the LURIC Study Group (Leiden, The Netherlands)*

**B11\*\*** From antigen expression to autoantibody detection: engineering, generation, and assay integration of the human recombinant protein-arginine deiminase 1 (PAD1) antigen for a particle-based multi-analyte technology (PMAT) autoimmune diagnostic platform. *Marta Fa, Ivet Martínez, Cristina García, Javier H. Hervás, Pau Marfull-Oromí, Andy Ishii, Matthew Hashimoto, Chelsea Bentow, Laura Martínez-Prat, David Lucia, Michael Mahler (Barcelona, Spain)*

**B12\*** Fab glycosylation in IgG4 autoimmune diseases: A clue to pathogenicity? *Francisca Faber, Ninotska Derksen, Theo Rispens, Inga Koneczny (Vienna, Austria)*

**B13\*** Glycosylation in the variable regions of MuSK and AChR autoantibodies: Effects on binding and pathogenicity in myasthenia gravis. *Blanca G. Sánchez Navarro, Hellen Schmidt, Rafael Meleka Hanna, Lillith Horstkorte, Miriam L. Fichtner (Berlin, Germany)*

**B14** Is the PL-7 index a useful immunological biomarker in antisynthetase syndrome? *Adrián García-García, Lydia García-Serrano, Jordi Bas Minguet, Laura Arias Soria, Francisco Morandeira Rego (Barcelona, Spain)*

**B15** Antinuclear antibodies and anti-double stranded DNA autoantibodies testing in a clinical diagnostic laboratory in Singapore. *Xin Er Frances Jin, Amos Zhi En Tay, Tai Ler Daryl Lee, Yutong Jiang, Cecilia Cheng Lai Ngan (Singapore)*

**B16\*\*** Reporting of reference intervals for anti-cardiolipin antibody (IgG and IgM) immunoassay: Normal reference ranges in Singapore. *Xin Er Frances Jin, Amos Zhi En Tay, Shan Wei Huang, Sang Thoe Goh, Cecilia Cheng Lai Ngan (Singapore)*

**B17\*\*** Prediction of immune-mediated side effects in skin cancer patients under immune checkpoint inhibitor therapy using liquid biopsies. *Björk Klein, Dana Westphal, Friedegund Meier, Claudia Günther, Julian Steininger (Dresden, Germany)*

**B18\*** Broad autoantibody profiles reveal novel diagnostic markers and HLA-linked self-reactivities in systemic lupus erythematosus. *Denis Lagutkin, Natalia Sherina, Julius Lindblom, Lorenzo Beretta, Helena Idborg, Lina Marcela Diaz-Gallo, PRECISESADS Clinical Consortium, Janique M. Peyper, Guillermo Barturen, Per-Johan Jakobsson, Leonid Padyukov, Marta E. Alarcón-Riquelme, Dionysis Nikolopoulos, Ioannis Parodis (Stockholm, Sweden)*

**B19** In-depth analysis of the autoantibody associations of the main nuclear patterns in HEp-2 IFA: What a general laboratory cohort has to tell us about real life pattern autoantibody association. *Diana Landoni, Gerson Keppeke, Trischna Martins, José de Sá, Carolina Diaz, Luis E. C. Andrade (Montevideo, Uruguay)*

**B20\*\*** Antibodies against P-body proteins as potential autoimmunity biomarkers in sensory neuronopathy. *Alès Makhloufi, Yannick Tholance, Francois Lassablière, Anne Berger, Coralie Borowczyk, Jean-Christophe Antoine, Jean-Philippe Camdessanché, Christian P. Moritz (Saint-Étienne, France)*

**B21** Generation of a sialic acid-binding conjugate for high-throughput detection of RA biomarkers using particle-based multi-analyte technology. *Eduard Martinez-Llapart, Mar Petit-Pedrol, David Lucia, Marta Fa, Ivet Martinez, Jonathan Davies, Miriam Garcia, Matthew Hashimoto, Andy Ishii, Chelsea Bentow, Mary Ann Aure, Brooke Holloway, Laura Martinez-Prat, Rene Toes, Michael Mahler (Barcelona, Spain)*

**B22\*\*** Glycan signature characterization using innovative particle-based multi-analyte technology platform. *Eduard Martinez-Llapart, Mar Petit-Pedrol, David Lucia, Marta Fa, Ivet Martinez, Matthew Hashimoto, Andy Ishii, Chelsea Bentow, Mary Ann Aure, Brooke Holloway, Laura Martinez-Prat, Rene Toes, Michael Mahler (Barcelona, Spain)*

TUESDAY,  
SEPTEMBER 9  
(12.30) until  
FRIDAY,  
SEPTEMBER 12  
(13.30)

**B23\*** Animal model of anti-NMDAR encephalitis by active immunization: Insights into the neuro-immunobiology and therapeutic interventions. *Estibaliz Maudes, Jesús Planagumà, Laura Marmolejo, Marija Radosevic, Ana Beatriz Serafim, Esther Aguilar, Carlos Sindreu, Jon Landa, Anna García-Serra, Francesco Mannara, Marina Cunquero, Anna Smith, Chiara Milano, Paula Peixoto-Moledo, Mar Guasp, Raquel Ruiz-García, Sarah M. Gray, Martin S. Weber, Marianna Spatola, Pablo Loza-Alvarez, Lidia Sabater, Carlos Matute, Josep Dalmau* (Göttingen, Germany)

**B24\*\*** Detection of anti-synthetase antibodies by immunoprecipitation-mass spectrometry. *Birthe Michiels, Sarah Tansley, Frédéric Coutant, Katja Lakota, Ellen De Langhe, Jean-Baptiste Vulsteke, Doreen Dillaerts, Tom Dehaemers, Jonas De Leeuw, Saša Čučnik, Nicole Fabien, Neil McHugh, Xavier Bossuyt* (Leuven, Belgium)

**B25** Immunoprecipitation – mass spectrometry allows to reduce the seronegative gap in systemic sclerosis. *Birthe Michiels, Marie Vanthuyne, Tikly Mohammed, Carole Lacout, Antoine Brochard, Frédéric Coutant, Katja Lakota, Ellen De Langhe, Jean-Baptiste Vulsteke, Doreen Dillaerts, Tom Dehaemers, Jonas De Leeuw, Saša Čučnik, Nicole Fabien, Emeline Vinatier, Neil McHugh, Sarah Tansley, May Y. Choi, Marvin J. Fritzler, Frédéric Houssiau, Xavier Bossuyt* (Leuven, Belgium)

**B26** Serological inconsistency in SLE: How assay choice influences anti-dsDNA antibody detection and monitoring. *Louis Nevejan, Mieke Hutsebaut, Isabelle Peene, Martine Vercammen* (Bruges, Belgium)

**B27** Evaluation of the analytical performance of ChLIA technology in the identification of antinuclear antibodies associated with SARD. *Piero Novel, Jacopo Bampa, Enrico Favaro, Lisa Agatea, Piera De Gaspari* (Padova, Italy)

**B28\*\*** Anti-integrin  $\alpha v \beta 6$  IgG antibody as a diagnostic and prognostic marker in ulcerative colitis. *Eleftheria Pertsinidou, Benita Salomon, Daniel Bergemalm, Samira Salihovic, Charlotte R.H. Hedin, Maria Ling Lundström, Åsa V. Keita, Maria K. Magnusson, Carl Eriksson, May-Bente Bengtson, Olle Grännö, Tone B. Aabrekk, Robert Movérare, Niclas Rydell, Helena Ekoff, Johan Rönnelid, BIO-IBD consortium, Mauro D'Amato, Trond E. Detlie, Gert Huppertz-Hauss, Randi Opheim, Petr Ricanek, Vendel A. Kristensen, Lena Öhman, Johan D. Söderholm, Robert Kruse, Carl M. Lindqvist, Marie Carlson, Dirk Repsilber, Marte L. Høivik, Jonas Halfvarson* (Uppsala, Sweden)

**B29** Development of a multi-disease antigen panel for autoimmune and inflammatory conditions. *Charlotta Preger, Maria Aspenberg, Metta Berenpas, Peter Nilsson, Elisa Pin* (Stockholm, Sweden)



**B30\*\*** Combined testing of anti-CD74 IgA and anti-UH-axSpA antibodies increases the diagnostic potential for axSpA. *Peter Ruytinx, Kurt de Vlam, Anouk Agten, Frank Vandenabeele, and Veerle Somers (Diepenbeek, Belgium)*

**B31** ENO1 surface localization and autoantibody response in prostate cancer. *Krystal R. Santiago, Kai Wen Cheng, Pedro T. Ochoa, Alfonso Duran, Zainab Alramadhan, Michael Reeves, Diana Lozano, Lemti Nyirendah, Julia Soliz, Evelyn S. Sanchez-Hernandez, Saied Mirshahidi, Susanne Montgomery, Brian R. Hu, Bhaskar Das, Frankis Almaguel, Stefan Ambis, Carlos A. Casiano (Loma Linda, USA)*

**B32** Development of recombinant myeloperoxidase as an innovative approach for the detection of anti-MPO antibodies. *Mar Petit-Pedrol, Mireia Urrutia-Herrera, Ingrid Gonzalez-Casacuberta, Cristina García, Javier H. Hervás, Rocio Doval, Chelsea Bentow, Joe Phillips, David Lucia, Michael Mahler (Barcelona, Spain)*

**B33\*** Improving diagnostics in seronegative myasthenia gravis in the D-A-Ch region through cell-based assay. *Marlene Wolfsgruber, Paolo Doksani, Tereza Duckova, Katja Stamberger, Anna-Sophie Zimmermann, Alexander Wöhrleitner, Lara Ergin, Lukas Weigl, Fritz Zimprich, Romana Höftberger, Sarah Hoffmann, Inga Koneczny (Vienna, Austria)*

**B34\*** Autoantibodies to dense fine speckled 70 (DFS70) antigen limit neutrophil extracellular trap formations. *Kayla Zhang, Rameen Jamil, Kiho Son, Katherine Radford, Paul Kim, Anthony Rullo, Matthew Miller, Dawn M.E. Bowdish, Ishac Nazy, Manali Mukherjee (Hamilton, Canada)*

## **C AUTOANTIBODIES IN SYSTEMIC AND ORGAN SPECIFIC AUTOIMMUNE DISEASES** (\*poster presentation)

**C1** Molecular mimicry study of the L1 protein of human papilloma virus. *Yekbun Adiguzel, Yehuda Shoenfeld (Ankara, Türkiye)*

**C2** Reviving autoimmune diseases and allergy. *Ana Margarida Albuquerque, Maria José Sousa, Catarina Castaldo, Rita Ribeiro, José Germano de Sousa, Germano de Sousa (Lisboa, Portugal)*

**C3** What about biomarkers in autoimmune disease cardiovascular risk assessment? *Ana Margarida Albuquerque, Maria José Sousa, Catarina Castaldo, Rita Ribeiro, José Germano de Sousa, Germano de Sousa (Lisboa, Portugal)*

TUESDAY,  
SEPTEMBER 9  
(12.30) until  
FRIDAY,  
SEPTEMBER 12  
(13.30)

**C4\*** Changes in myeloperoxidase (MPO)-specific antineutrophil cytoplasmic antibody (ANCA) levels before and after treatment and their association with Birmingham Vasculitis Activity Score (BVAS). *Marcos Lopez Hoyos, Juan Irure Ventura, Chelsea Bentow, Mary Ann Aure, Carmen Andalucia, Michael Mahler (San Diego, USA)*

**C5** Case report of HMG-CoA reductase necrotizing myopathy: novel approach to antibody confirmation. *Sarah Beck, Hamish Anderson, Mark Van Voorthuizen, Paula Keating, John O'Donnell (Christchurch, New Zealand)*

**C6** Special case in celiac disease diagnostics: Detection of elevated endomysium or transglutaminase IgA-Ab despite selective IgA deficiency (slgAD). *Bettina Becker (Geesthacht, Germany)*

**C7\*** Plasticity of natural autoantibody network in autoantibody positive Hashimoto Thyroiditis. *Timea Berki, Dávid Szinger, Katalin Böröcz, Alain Le Roux, Szabina Erdő-Bonyár, Diána Simon, Péter Németh (Pécs, Hungary)*

**C8** Anti-HMGR tests, reliable enough? When avoiding biopsies is at stake. *Virginia Peña Blanco, Maria José Martínez Becerra, Karina Guzmán Lopez, Carmen Vegas Sanchez (Madrid, Spain)*

**C9\*** Clinical profile and outcomes in anti-TIF1 $\gamma$  positive idiopathic inflammatory myositis patients: a Greek cohort study. *Vasiliki Symvou, Christos Liaskos, Eleni Patrikiou, Ioannis Alexiou, Theodora Simopoulou, Christina G. Katsiari, Dimitrios P. Bogdanos (Larissa, Greece)*

**C10\*** Anti-fibrillar antibodies induced by viral molecular mimicry in a paediatric patient. *Teresa Carbone, Raffaele Pecoraro, Chiara Autilio, Vito Pafundi (Potenza, Italy)*

**C11** An unfrequent typical case of PCNA autoantibodies in SLE. *Maria Rosaria De Cagna, Vincenza Colucci, Norma Notaristefano, Luigi Francesco Morrone, Marilina Tampoia (Taranto, Italy)*

**C12\*** Can immunoglobulin G (IgG) N-glycome changes in the anti-neutrophil cytoplasmic autoantibody (ANCA)-associated vasculitis improve monitoring disease status? *Lovorka Derek, Anđelo Beletić, Matija Crnogorac, Sanja Marević, Brankica Šimac, Marina Tomičević, Nevenka Stančin, Maja Hanić, Ivica Horvatić, Gordan Lauc (Zagreb, Croatia)*

**C13** Assessment of the impact of PM 2.5 and NO<sub>2</sub> exposure in a European hotspot for air pollution on autoantibody status in rheumatoid arthritis. *G. Campisi, M. Volta, M. Vezzoli, Emirena Garrafa (Brescia, Italy)*

**C14** When being positive is not enough: The diagnostic dilemma of anti-Sp100 antibodies. *Lydia García-Serrano, Adrián García-García, Laura Arias Soria, Jordi Bas, Francisco Morandeira (L'Hospitalet de Llobregat, Spain)*

**C15** The role of autoantibodies in post-chikungunya viral arthritis disease severity. *Samantha Ansah-Dico, Ilana Heckler, Michelle Premazzi Papa, Alfonso Sucerquia Hernández, Jose Forero Mejía, Sarah Renee Tritsch, Evelyn Mendoza-Torres, Liliana Encinales, Andres Cadena Bonfanti, Abigale Marie Proctor, Jessica M. Wells, Daniela Díaz Hernández, Juan Manuel Pretelt Gazabon, Mónica Gómez Pulido, Sara Camila Castiblanco-Arroyave, Samuel Joseph Simmens, Rebecca Lynch, Aileen Yu-hen Chang (Mountain Lakes, USA) Abstract withdrawn at short notice.*

**C16\*** Prevalence of systemic sclerosis-associated antibodies in patients with positive nucleolar or centromere anti-nuclear antibody patterns. *Gordana Juricic, Sandra Aleksandrovic, Tea Tomisic, Lorena Honovic (Pula, Croatia)*

**C17** Evaluation of anti-CENP reactivity in samples exhibiting the centromere HEp-2 pattern, which is associated with a better prognosis within the limited cutaneous systemic sclerosis spectrum. *Gerson Keppeke, Diana Landoni, Cristiane Kayser, Pedro Matos, Larissa Diogenes, Jessica Keppeke, Silvia Helena Rodrigues, Luis Eduardo C. Andrade (Coquimbo, Chile)*

**C18** Antinuclear antibodies in rheumatoid arthritis: sign or disease? *Werner Klotz, Manfred Herold (Innsbruck, Austria)*

**C19** Frequency of autoantibodies in Systemic Sclerosis. *Ana Kozmar, Kristina Dukić (Zagreb, Croatia)*

**C20** Frequencies of myositis-specific antibodies (MSAs) and myositis-associated antibodies (MAAs): Our experience. *Ema Vinceljak, Andrea Tešija Kuna, Ines Vukasović, Tamara Sušić (Zagreb, Croatia)*

**C21** Two rare cases with coexisting anti-NMDAR, MOG, and GFAP antibodies and overlapping neurological syndromes. *Dongrui Li, Rong Lai, Shenghua Zong, Hongyan Zhou, Pilar Martinez-Martinez (Zhengzhou, China) Abstract withdrawn at short notice.*

**C22** Becoming familiar with the unusual. Anti-Mi2 and anti-CENPB, not that weird. *Yesenia Jiménez De Las Pozas, Andrea Moñino Sánchez, Natalia Casado Navarro, María Del Carmen Vegas Sánchez, María Rosa Juliá Benique, María José Martínez Becerra (Madrid, Spain)*

TUESDAY,  
SEPTEMBER 9  
(12.30) until  
FRIDAY,  
SEPTEMBER 12  
(13.30)

**C23\*** Biomarker-based forecasting of SLE flares: Toward a new era of precision and proactive disease management. *B.C. Geertsema-Hoeve, E.D. Kaan, T.E. Brunekreef, M. Grundhuber, Linda Mathsson-Alm, A.N. Concepcion, J.M. van Laar, M. Limper (Uppsala, Sweden)*

**C24\*** Anti-dsDNA antibody isotypes in systemic lupus erythematosus: the neglected diagnostic parameters. *Torsten Matthias, Claudia Pratas, Panagiotis Gitsioudis, Patricia Wusterhausen (Wendelsheim, Germany)*

**C25** Novel epitopes and multiparametric diagnostics to eliminate unnecessary biopsies in pediatric celiac disease. *Ania Szaflarska-Poplawska, Patricia Wusterhausen, Simon D. Lytton, Torsten Matthias (Wendelsheim, Germany)*

**C26** “Ouroboros” in neurology? Anti-immune-system antibodies in sensory neuronopathies. *Christian P. Moritz, Yannick Tholance, Nadia Boutahar, Coralie Borowczyk, Anne-Emmanuelle Berger, Stéphane Paul, Jean-Christophe Antoine, Jean-Philippe Camdessanché (Saint-Étienne, France)*

**C27** Association of PTPN22 and STAT4 polymorphisms with anti-Jo-1 positive antisynthetase and myositis-scleroderma overlap syndromes. *G. Csere, K. Szabó, Z. Griger, P. Torres, P. Antal-Szalmás, R. Gindele, Krisztina Péntzes-Daku (Debrecen, Hungary)*

**C28** Autoantibodies against glutamate receptors (type NMDA) of immunoglobulin classes IgA and IgM are associated with cognitive impairment. *Kristin Rentzsch, Carsten Finke, Frederik Bartels, K. Borowski, Winfried Stöcker (Lübeck, Germany)*

**C29** Evaluation of criteria and non-criteria anti-phospholipid antibodies in pregnant women with systemic lupus erythematosus or anti-phospholipid syndrome: a longitudinal study and method comparison using a novel particle-based multianalyte technology. *Estíbaliz Ruiz-Ortiz, María Borrell, Marta Santana, Sara Beça, María Torradeflot, Carmen Domènech, Lucía Marcelo, Cristina Amaldos-Pérez, Carmen Andalucía, Mary Ann Aure, Michael Mahler, Gerard Espinosa, Núria Baños (Barcelona, Spain)*

**C30\*** Variability in the detection of autoantibodies in autoimmune hepatitis: a collaborative study by the Autoimmunity Group of the Catalan Society of Immunology. *Estíbaliz Ruiz-Ortiz, Cristina Amaldos-Pérez, Samuel Torres García, Nallibe Lanio Amador, Andrés Baucells, Clara Esteve Cols, Francisco Morandeira, Anaís Mariscal (Barcelona, Spain)*

**C31** Isolated anti-cardiolipin reactivity in Syphilis sera highlights diagnostic utility of CL/ $\beta_2$ GPI complex in APS testing. *Philipp Sterna, Conrad Heilmann, Ariane Wenzel, Matthias Morgenstern, Mahdavi Rouzbeh, Klemens Löster, Mathias Schlegel (Heidesee, Germany)*

**C32** Refining the serological scores in rheumatoid arthritis classification criteria: an international study. *Lieve van Hoovels, C. Chatzichristos, J. Iurre-Ventura, D. Vandebeek, E. Lodewijckx, B. Vander Cruyssen, D. Sieghart, C. Bonroy, E. Nagy, R. Pullerits, S. Čučnik, C. Dahle, I. Heijnen, L. Bernasconi, F. Benkhadra, L. Bogaert, S. Van Den Bremt, A. Van Liedekerke, G. Vanheule, I. Robbrecht, L. Studholme, C. Wirth, R.B. Müller, D. Kyburz, C. Sjöwall, A. Kastbom, R. Ješe, B. Jovancevic, E. Kiss, P. Jacques, G. Steiner, M. Devos, M. López-Hoyos, P. Verschueren, X. Bossuyt (Leuven, Belgium)*

**C33** Relapsing polychondritis in Brazil: epidemiology, diagnosis, treatment, and patient perspectives on symptoms and complications. *Victória Marsura Caselli, Talitta Figueiredo Matos, Amanda Kloch, Tiane Crestani dos Santos, Carlos von Mühlen, Nilton Salles Rosa Neto (Encinitas, USA)*

**C34\*** RP11 and RP155 autoantibodies in patients with systemic sclerosis phenotype. *Nikifor K. Konstantinov, Carlos von Mühlen, Konstantin N. Konstantinov (Encinitas, USA)*

**C35** Positive Measles-Rubella-Zoster Reaction (MRZR) prevalence in Croatian patients with Multiple Sclerosis and positive oligoclonal bands (OCBs). *Ines Vukasović, Tešija Kuna Andrea, Vinceljak Ema, Vrdoljak Ana (Zagreb, Croatia)*

**C36** Lupus and nutrition – The first step to control your flares? *Torsten Matthias, Theresa Fischer, Patricia Wusterhausen (Wendelsheim, Germany)*

**C37** Autoantibody Profiling in Autoimmune Liver Disease: A Comparison Between MSK-IF and Liver Immunoblot in a Bruneian Cohort. *Amirah BZ Suhaimi, Haskamila MD Hassan (Bandar Seri Begawan, Brunei Darussalam)*

The following companies participate in the industrial exhibition and/or have made a generous sponsorship (in alphabetical order):

**AESKU Group GmbH**

(Wendelsheim, Germany)

[www.aesku.com](http://www.aesku.com)

**Booth 11**

**AliveDx Suisse SA**

(Eysins, Switzerland)

<https://alivedx.com>

**Booth 2**

**AROTEC Diagnostics Limited**

(Lower Hutt, Wellington, New Zealand)

<https://www.arodia.com>

**Booth 5**

**Bio-Rad Laboratories**

(Hercules, USA)

[www.bio-rad.com](http://www.bio-rad.com)

**Booth 10**

**BioSystems**

(Barcelona, Spain)

[www.biosystems.com](http://www.biosystems.com)

**Booth 14**

**BÜHLMANN Laboratories AG**

(Schönenbuch, Switzerland)

[www.buhlmannlabs.ch](http://www.buhlmannlabs.ch)

**Booth 4**

**D-tek s.a.**

(Mons, Belgium)

[www.d-tek.be](http://www.d-tek.be)

**Booth 7**

**EUROIMMUN AG**

(Lübeck, Germany)

[www.euroimmun.de](http://www.euroimmun.de)

**Booth 12**

**Gold Standard Diagnostics Frankfurt GmbH**

(Dietzenbach, Germany)

<https://clinical.goldstandarddiagnostics.com>

**Booth 9**

**Human Gesellschaft für Biochemica und Diagnostik mbH**

(Wiesbaden, Germany)

[www.human.de](http://www.human.de)

**Klinisch-immunologisches Labor Prof. Dr. med. Winfried Stöcker**

(Groß Grönu, Germany)

[www.labor-stoecker.de](http://www.labor-stoecker.de)

**medac GmbH**

(Wedel, Germany)  
[www.medac.de](http://www.medac.de)

**MEDIPAN GmbH**

(Dahlewitz, Germany)  
[www.medipan.de](http://www.medipan.de)

**PEPperPRINT GmbH**

(Heidelberg, Germany)  
<https://www.pepperprint.com>

**Sebia**

(Lisses, France)  
[www.sebia.com](http://www.sebia.com)

**Seramun Diagnostica GmbH**

(Heidesee, Germany)  
[www.seramun.com](http://www.seramun.com)

**Thermo Fisher Scientific, Phadia AB**

(Uppsala, Sweden)  
[www.phadia.com](http://www.phadia.com)

**TRILLIUM GmbH**

(Grafrath, Germany)  
[www.trillium.de](http://www.trillium.de)

**Viramed Biotech AG**

(Planegg, Germany)  
<https://www.viramed.de>

**Werfen**

(San Diego, USA)  
[www.werfen.com](http://www.werfen.com)

**Wieslab Diagnostic Services**

(Malmö, Sweden)  
[https://www.svarlifescience.com/  
services/wieslab-diagnostic-services](https://www.svarlifescience.com/services/wieslab-diagnostic-services)

**We thank these companies for helping to make this symposium  
successful.**

**Booth 15**

**Booth 8**

**Booth 17**

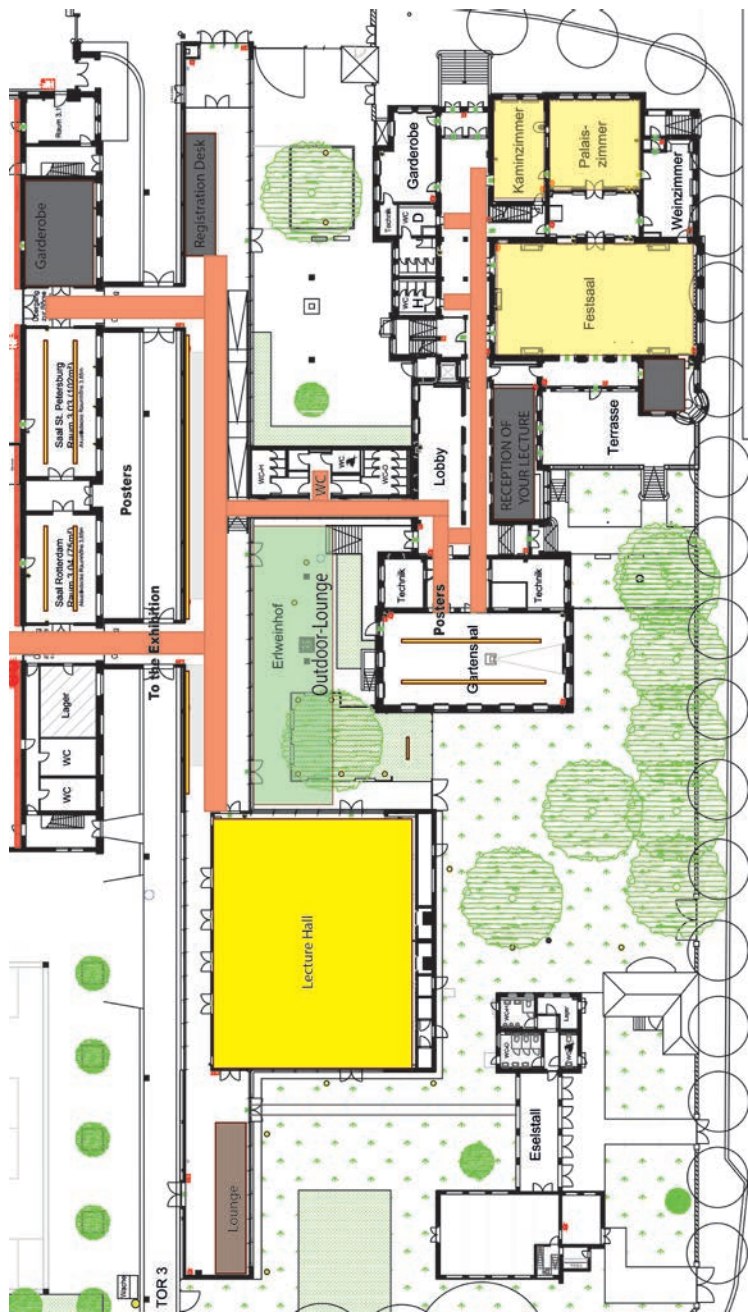
**Booth 13**

**Booth 3**

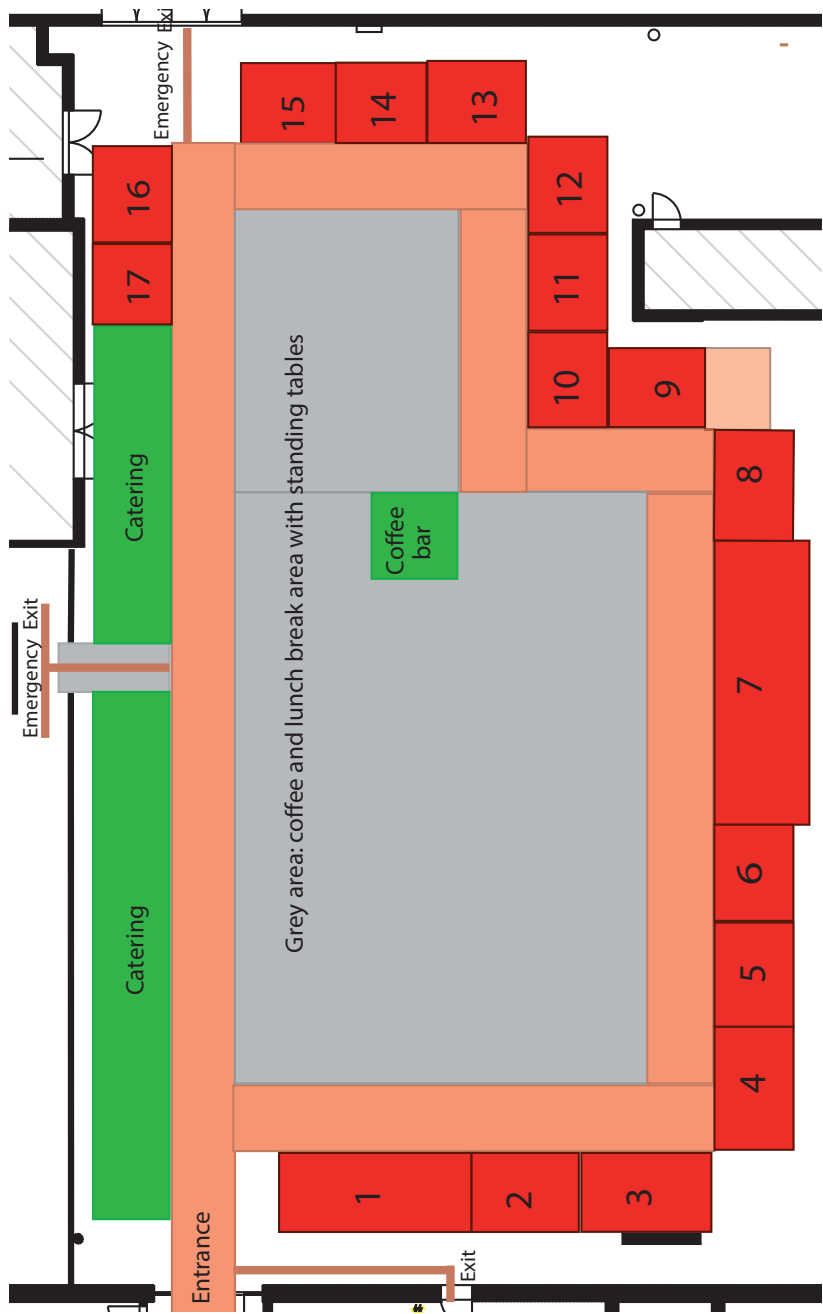
**Booth 16**

**Booth 1**

**Booth 6**







## GENERAL INFORMATION

### Social program

Tuesday,  
September 9, 2025  
17.45-22.00

Thursday,  
September 11, 2025

**Welcome reception** in the industrial exhibition of the congress venue (Dresden Fair, Hall 3)

### **Social Dinner in Albrechtsberg Castle (Dresden)** (140 €)

Albrechtsberg Castle was built 1850-1854 for Prince Albrecht of Prussia, which had to leave Prussia because he had married "below himself". Schloss Albrechtsberg was built in the neoclassical style, modeled on the Villa d'Este near Rome. All the builders came from Prussia, and thus the castle is an important piece of Prussian architectural history in Saxony.

Departure by bus starting from the congress venue, Musical Champagne Reception and visit of the Castle, Social Dinner (no formal dress code).

18.15-18.30

Departure by shuttle busses from the congress venue (Dresden Fair)

18.45-19.00

Champagne reception

19.00

Social Dinner (no formal dress code)

21.30-22.00

Return by busses to the Congress venue (Dresden Fair), via InterCity hotel.

### GREEN CONGRESS

Environmental protection and sustainability are important to us. The Dresden Symposium on Autoantibodies is a **Green Congress**.

For short transportation distances, we are **only** working with local partners: catering, event technology and event equipment, local printing house, local security and cleaning companies. We have also managed to establish a mostly paperless congress organization.

Furthermore, during the congress we use small reusable badges without lanyards and reusable long-life conference (cotton) bags.

Our caterer only utilizes reusable porcelain tableware, glasses and cutlery, reusable and returnable glass bottle as well as linen tablecloths. The symposium waste is separated.

You can help us protect the environment: Use public transport instead of a car! You will get **free tickets** for city transportation at the congress desk. Local transport information and timetables please find at <https://www.dvb.de/en-gb/>

Karsten Conrad, Germany

Jan Damoiseaux, The Netherlands  
Christian Moritz, France

Marvin Fritzler, Canada  
Yehuda Shoenfeld, Israel

Luis E.C. Andrade, Brazil  
Nicola Bizzaro, Italy  
Martin Blüthner, Germany  
Dimitrios P. Bogdanos, Greece  
Xavier Bossuyt, Belgium  
Carlos A. Casiano, USA  
May Choi, Canada  
Claudia Günther, Germany  
Manfred Herold, Austria  
Maria Infantino, Italy  
Pier Luigi Meroni, Italy  
Gabriela Riemekasten, Germany  
Johan Rönnelid, Sweden  
Daniela Sieghart, Austria  
Günter Steiner, Austria  
Carlos Alberto von Mühlen, USA

Lars Komorowski, EUROIMMUN  
Medizinische Labordiagnostika AG  
Laura Martinez-Prat, Werfen  
Nina Olschowka, Phadia GmbH ThermoFisher Scientific  
Dirk Roggenbuck, MEDIPAN GmbH

Rico Hiemann  
Thorsten Krieger  
Dirk Reinhold  
Ulrich Sack  
Clemens A. Schulze Lohoff  
(Members of the Advisory Committee of the GFID e.V.)  
Marc Schmitz  
(Institute of Immunology, Technical University Dresden)

## GENERAL INFORMATION

### Chairman

### Co-Chairmen

### Honorary Chairs

### International Advisory Board

### Industrial Board

### National Organizing Committee

## GENERAL INFORMATION

### Symposium Venue/ Workshop Venue

Address of the symposium and workshop venue:  
Messe Dresden (Dresden Fair)  
Messering 6, Tor 2  
01067 Dresden

### Registration office

September 8: 08.00 – 16.00 (only for workshop participants!)  
September 8: 16.00 – 20.00 (“evening before” registration)  
September 9: 08.00 – 22.00  
September 10: 08.00 – 18.30  
September 11: 08.00 – 18.30  
September 12: 08.00 – 17.00

### Phone on site

+49 160 98 35 87 47 and +49 351 44 58 222

### Language

English, no simultaneous translation

### Organization (Registration, Reservation, Exhibition)

Dr. Silke Zwjatkow  
GFID e.V.  
Wasastraße 14  
01219 Dresden, Germany  
Phone +49 351 26 32 279  
Fax +49 351 26 32 280  
E-mail: [gfid.ev@me.com](mailto:gfid.ev@me.com)

### Registration fee (on site)

Participants	EUR 910
GFID members	EUR 885
Students/Residents	EUR 460
ICAP Workshop	EUR 250
One day ticket	EUR 290

(includes unlimited access to all scientific sessions, welcome reception, industrial exhibition, one copy of the electronic edition of the conference book)

Members of the Dresden University are free of charge.

### Credit Points

The Saxon State Medical Chamber rated the event with a total of **35 credit points (CME)**.

**Save the date:**  
**Welcome to the 18<sup>th</sup> Dresden Symposium on Autoantibodies,**  
**Dresden, September 6-10, 2027**

---



**Society for the Advancement of Immunodiagnostics**

In September of 2002, Dr. Karsten Conrad and colleagues founded the “Society for the Advancement of Immunodiagnostics” (Gesellschaft zur Förderung der Immundiagnostik – GFID e.V.). Through its work the society wants to contribute to help patients with immunologically caused diseases receive an early diagnosis and adequate treatment – especially through the publication of specialized literature and the organization of scientific meetings and workshops. Highlights are the biennial Dresden Symposia on Autoantibodies.

To be able to continue our non-profit work in the future, we would highly appreciate your support in searching funding and sponsoring opportunities.

[www.gfid-ev.de](http://www.gfid-ev.de)

GFID E.V.  
Ostsächsische Sparkasse Dresden  
IBAN: DE63 8505 0300 3120 0593 57  
BIC (SWIFT): OSDDDE81XXX



[illegible]

Come & visit **Sebia's booth n°13**  
to discover more!

# *Rheumatoid arthritis* *a holistic portfolio*

**with Anti-MCV**  
**fill the gap to unlock the potential  
of early diagnosis**

**sebia**

The new language of life