

12TH DRESDEN SYMPOSIUM ON AUTOANTIBODIES

Dresden, September 23–26, 2015

CRTD – 01307 Dresden, Fetscherstraße 105

**2nd International Consensus on ANA Pattern (ICAP) Workshop
2nd International Autoantibody Standardization (IAS) Workshop**

Dresden, September 22, 2015

BioInnovationsZentrum – 01307 Dresden, Tatzberg 47



Final Programme

The congress venue 2015: Centre for Regenerative Therapies (CRTD) in 01307 Dresden, Fetscherstrasse 105
(picture: Clemens A. Schulze Lohoff)



Dear Colleagues,

On behalf of the Organizing Committee it is a great pleasure to welcome you to our 12th Dresden Symposium on Autoantibodies. The symposium is organized by the Institute of Immunology of the Medical Faculty of the Technical University Dresden in cooperation with the Association for the Advancement of Immune Diagnostics (www.gfid-ev.de) and the Section Immunodiagnosics of the German Society for Clinical Chemistry and Laboratory Medicine (www.dgkl.de). The meeting intends to bring together clinicians of different disciplines, immunologists and basic researchers for discussion of the various aspects of the induction, pathogenetic role and clinical relevance of autoantibodies as well as methodical aspects of autoantibody testing. The current symposium is entitled „From Autoantibody Research to Standardized Diagnostic Assays in the Management of Human Diseases“. An attractive scientific program has been developed together with the Co-chairs and the International Advisory Board as well the as the Advisory Board of the Association for the Advancement of Immune Diagnostics which represent also the DGKL Section of Immunodiagnosics. We would like to express our thanks to the members of the International Advisory Board and to the active contributors who will present their latest achievements as well as to the many sponsors who enabled this symposium. The organizers of the symposium are deeply indebted to the Center of Regenerative Medicine Dresden (CRTD) and in particular to the Director of the CRTD, Professor Elly Tanaka, for placing at our disposal this wonderful congress venue.

As the 12th Dresden Symposium on Autoantibodies focuses on standardization and harmonization of autoantibody testing, we are delighted to host the 2nd International Consensus on ANA Pattern (ICAP) Workshop and the 2nd International Autoantibody Standardization (IAS) Workshop on September 22, 2015 as a continuation of the standardization workshops at the IWAA in São Paulo, 2014.

We expect that our 12th Dresden Symposium on Autoantibodies as well a the ICAP and IAS workshops will stimulate a broad debate on how the new achievements from the bench work could help to improve diagnostics and therapy of autoimmune diseases. We hope that you will enjoy the scientific programme and your stay in Dresden.

Karsten Conrad
On behalf of the Organizing Committee

PROGRAMME

2nd International Consensus on ANA Pattern (ICAP) Workshop

Co-Chairs: L. Andrade (São Paulo, Brazil)
E.K.L. Chan (Gainesville, USA)

08.30–10.30

2ND ICAP WORKSHOP PART I

08.30–08.50

Introduction – Overview and update
Luis Andrade (São Paulo, Brazil)

08.50–09.10

Website ANApatterns.org - Introduction
Wilson de Melo Cruvinel (Goiânia-Goiás, Brazil)

09.10–09.40

Discussion on mandatory/competent-level vs.
expert-level patterns; *Edward K.L. Chan (Gainesville,
USA) and Manfred Herold (Innsbruck, Austria)*

09.40–10.10

Developing composite patterns as a separate category
*Luis Andrade (São Paulo, Brazil) and
Karsten Conrad (Dresden, Germany)*

10.10–10.30

ANA patterns association with diseases
*Jan Damoiseaux (Maastricht, The Netherlands) and
Minoru Satoh (Kitakyushu, Japan)*

10.30–11.00

COFFEE BREAK

11.00–13.00

2ND ICAP WORKSHOP PART II

11.00–12.00

Systematic re-visit/update ANA patterns by compartments
to consider of other patterns to be included:
Nuclear patterns: *Karsten Conrad (Dresden, Germany)
and Jan Damoiseaux (Maastricht, The Netherlands)*;
Nucleolar patterns: *Minoru Satoh (Kitakyushu, Japan)*;
Cytoplasmic patterns: *Edward K.L. Chan (Gainesville,
USA) and Carlos A. von Mühlen (Porto Alegre, Brazil)*;
Mitotic and complex patterns: *Manfred Herold
(Innsbruck, Austria)*

12.00–12.15

Recommendations for ANA pattern reporting
*Carlos A. von Mühlen (Porto Alegre, Brazil),
Jan Damoiseaux (Maastricht, The Netherlands) and
Ignacio Garcia-De La Torre (Guadalajara, Mexico)*

12.15–12.30

Proposal of an on-line assessment tool for users to gain
competence *Edward K.L. Chan (Gainesville, USA) and
Wilson de Melo Cruvinel (Goiânia-Goiás, Brazil)*

Translation into other languages – Discussion regarding strategy and guideline *Edward K. L. Chan (Gainesville, USA) and Ignacio Garcia-De La Torre (Guadalajara, Mexico)*

12.30-12.45

Planning of future meetings
Luis Andrade (São Paulo, Brazil)

12.45-13.00

LUNCH BREAK

13.00–14.00

2nd International Autoantibody Standardization (IAS) Workshop

Co-Chairs: P. L. Meroni (Milan, Italy)
J. Sheldon (London, UK)

2ND IAS WORKSHOP PART I

Introduction, *Pier Luigi Meroni (Milan, Italy)*

14.00–16.00

14.00–14.15

Report from each initiative on ongoing standardization processes

14.15–15.15

- Australasian: *Tiffany Hughes (Bedford Park, Australia)*
- ASC/IUIS: *Luis Andrade (São Paulo, Brazil)*
- EASI: *Yehuda Shoenfeld: (Tel-Hashomer, Israel)*
- EULAR: *Johan Rönnelid (Uppsala, Sweden)*
- IFCC: *Joanna Sheldon (London, UK)*

Establishment of strategies for improvement in the quality of standards in terms of traceability, reproducibility and commutability
coordinated by Joanna Sheldon (London, UK)

15.15–16.00

COFFEE BREAK

16.00–16.30

2ND IAS WORKSHOP PART II

Designing a practical agenda with objective goals addressing collaborative and complementary initiatives from the several organizations
coordinated by Pier Luigi Meroni (Milan, Italy)

16.30–18.30

16.30-17.30

Issuing an Agreement Memorandum establishing the basis for the official collaboration and mutual support between IUIS/ASC, IFCC, EULAR, EASI and Australasian Initiative – a proposal to be read and edited on site by all –
coordinated by Luis Andrade (São Paulo, Brazil)

17.30-18.30

Wednesday
September 23

08.00–21.00

10.30–11.00

11.00–12.30

11.00–11.45

11.45–12.20

12.20–14.00

14.00–15.30

14.00–14.30

14.30–14.50

14.50–15.10

15.10–15.30

15.30–16.00

Registration

Welcome and Introduction

HOT TOPICS IN AUTOIMMUNITY

Co-Chairs: K. Conrad (Dresden, Germany)
G. J.M. Pruijn (Nijmegen, The Netherlands)

Novel aspects of the mosaic of autoimmunity
Yehuda Shoenfeld (Tel Hashomer, Israel)

Can we cure autoimmune diseases?
Falk Hiepe (Berlin, Germany)

LUNCH BREAK – POSTER AND EXHIBITION VIEWING

Poster viewing

P1–P33 Methodical Aspects and Diagnostic Strategies

FROM RESEARCH TO CLINICAL APPLICATION

Co-Chairs: C.A. Casiano (Loma Linda, USA)
M. Herrmann (Erlangen, Germany)

Anti-beta2 GPI epitope specificity: from experimental models to diagnostic tools
Pier Luigi Meroni (Milan, Italy)

The enigmatic DFS70/LEDGFp75 autoantibody-autoantigen system: from basic research to clinical applications
Carlos A. Casiano (Loma Linda, USA)

Autoantibodies to rods/rings induction in monitoring HCV therapy
Edward K.L. Chan (Gainesville, USA)

Glycosylation of autoantibodies as inflammatory marker
Martin Herrmann (Erlangen, Germany)

COFFEE BREAK

EUROIMMUN Session
AUTOIMMUNE NEUROLOGIC DISEASES

Co-Chairs: W. Stöcker (Lübeck, Germany)
R. Höftberger (Vienna, Austria)

Anti-neuronal autoimmune encephalitis – diagnostic methods and interpretation of results
Romana Höftberger (Vienna, Austria) 16.00–16.30

Revealing new forms of autoimmune encephalitis associated with autoantibodies against neuron specific Na/K-ATPase ATP1A3, neurochondrin, flotillin and inositoltriphosphat-receptors
Winfried Stöcker (Lübeck, Germany) 16.30–17.00

Assays in demyelinating diseases and their assessment
Patrick Waters (Oxford, UK) 17.00–17.30

Anti-SPAG16 antibodies in primary progressive multiple sclerosis are associated with an elevated progression index
Laura de Bock (Diepenbeek, Belgium) 17.30–17.40

CANDIDATE FOR THE DRESDEN PRIZE

Neurochondrin is a target for autoantibodies in a unique form of autoimmune cerebellitis associated with brainstem syndrom
Ramona Miske (Lübeck, Germany) 17.40–17.50

CANDIDATE FOR THE DRESDEN PRIZE

Identification of novel candidate antibody biomarkers in spinal cord injury
Ilse Palmers (Diepenbeek, Belgium) 17.50–18.00

CANDIDATE FOR THE DRESDEN PRIZE

Get together in the Industrial Exhibition 18.00

Thursday
September 24

08.30–10.30

PROTAGEN Session
THE CHALLENGE TO FILL DIAGNOSTIC
GAPS IN AUTOIMMUNE DISEASES

Co-Chairs: P. Schulz-Knappe (Dortmund, Germany)
M. Schneider (Düsseldorf, Germany)

08.30–09.00

An enigma and a beast: Systemic lupus erythematosus
Matthias Schneider (Düsseldorf, Germany)

09.00–09.30

Massive screening of autoantibodies in autoimmune
diseases: The SeroTag Approach
Peter Schulz-Knappe (Dortmund, Germany)

09.30–09.50

Mining for common reactivity patterns of human au-
toantibodies against endogenous protein targets using
clustered autoantibody reactivities
Hans-Dieter Zucht (Dortmund, Germany)

09.50–10.10

Biomarker support for SLE-drug development:
NavigAID SLE
Petra Budde (Dortmund, Germany)

10.10–10.30

Diagnostic performance of novel autoantibodies for
systemic sclerosis
Johannes Schulte-Pelkum (Dortmund, Germany)

10.30–11.00

COFFEE BREAK – POSTER AND EXHIBITION VIEWING

11.00–12.30

STANDARDIZATION/HARMONIZATION
OF AUTOANTIBODY TESTING

Co-Chairs: P. L. Meroni (Milan, Italy)
J. Sheldon (London, UK)

11.00–11.30

Current status and issues of concern for the diagnostic
autoantibody tests
Minoru Satoh (Kitakyushu, Japan)

11.30–12.00

The International Autoantibody Standardization (IAS) –
Overview and update of the initiatives
Joanna Sheldon (London, UK)

12.00–12.30

Results of the Islet Autoantibody Standardization Program
2015 Workshop
Michael Schlosser (Karlsberg, Germany)

LUNCH BREAK – POSTER AND EXHIBITION VIEWING

12.30–14.00

Poster viewing

P34–P55 Systemic Autoimmune Diseases

EASI FORUM MEETING SYMPOSIUM

12.30–14.00

(Conference room of the BioInnovationsZentrum in the neighbouring building)
(EASI members only)

**STANDARDIZATION/HARMONIZATION
OF ANA TESTING**

14.00–15.30

Co-Chairs: Luis E.C. Andrade (São Paulo, Brazil)
M. Herold (Innsbruck, Austria)

Current concepts and future directions for the assessment of autoantibodies to cellular antigens referred to as anti-nuclear antibodies
Michael Mahler (San Diego, USA)

14.00–14.30

PCQAUTO: five-year experience of a Quality Control Program with ANA-HEp2 in Brazil
Carlos Alberto von Mühlen (Porto Alegre, Brazil)

14.30–14.45

ANA-Detection by Indirect immunofluorescence (IFT) on HEp-2 cells versus other screening methods: experience from ANA proficiency testing in the German INSTAND e.V. QA program
Martin Blüthner (Karlsruhe, Germany)

14.45–15.00

ANA testing – human eye versus computer
Manfred Herold (Innsbruck, Austria)

15.00–15.15

The International Consensus on ANA Pattern (ICAP) – Overview and update of the initiatives
Luis E.C. Andrade (São Paulo, Brazil), Edward K.L. Chan (Gainesville, USA), Jan Damoiseaux (Maastricht, The Netherlands), Karsten Conrad (Dresden, Germany)

15.15–15.30

COFFEE BREAK

15.30–16.00

16.00–18.10

**PRESENTATIONS OF THE CANDIDATES
FOR THE DRESDEN PRIZE**

Co-Chairs: K. Conrad (Dresden, Germany)
T. Krieger (Hamburg, Germany)

- 16.00–16.10 QUANTA Flash anti-dsDNA chemiluminescent immunoassay results show stronger association with lupus nephritis than traditional ELISA
Chelsea Bentow (San Diego, USA)
- 16.10–16.20 One ELISA to catch them all – Secondary necrotic cell (SNEC) ELISA as a novel approach for autoantibody detection in systemic lupus erythematosus (SLE)
Mona Biermann (Erlangen, Germany)
- 16.20–16.30 Autoantibodies to two novel peptides in seronegative and early rheumatoid arthritis
Liesbeth de Winter (Diepenbeek, Belgium)
- 16.30–16.40 Detection of myositis specific autoantibodies: comparison between line blot assay and “gold standard” immunoprecipitation method
Micaela Fredi (Brescia, Italy)
- 16.40–16.50 Indirect immunofluorescence assay on fixed HEp-2 M4 cells for routine diagnostics of anti muscle-specific kinase autoantibodies in Myasthenia gravis
Sandra George, S. Paulick, Ilka Knütter, Nadja Röber, Rico Hiemann, Dirk Roggenbuck, Karsten Conrad and Jan-Heiner Küpper (Senftenberg, Germany)
- 16.50–17.00 Prevalence and significance of PR3-ANCA in children and adolescents with inflammatory bowel disease
Josefine Jahn (Dresden, Germany)
- 17.00–17.10 The 3-dimensional structures of human and microbial transglutaminases complexed to gliadin are similar
Patricia Jeremias (Wendelsheim, Germany)
- 17.10–17.20 The oxidative burst mediates anti-inflammatory clearance of dead cells in a mouse model of systemic lupus erythematosus and inflammatory arthritis
Deborah Kienhoefer (Erlangen, Germany)

- Mathematical model of systemic lupus erythematosus (SLE) development: focus on the dynamics of immune complex formation and Th17 immune response
Sergei Kuznetsov (St. Petersburg, Russia) 17.20–17.30
- Prevalence and clinical impact of anti-retinal antibodies in uveitis
Marco Schreurs (Rotterdam, The Netherlands) 17.30–17.40
- Rapid detection and differentiation of autoimmune hepatitis type I, II and III using novel CytoBead® AIH assay
Mandy Sowa (Senftenberg, Germany) 17.40–17.50
- Development of a quantitative immunofluorescence-based assay for the detection of islet autoantibodies
Katerina Vafia (Dresden, Germany) 17.50–18.00
- Added value of the automated indirect immunofluorescence for antinuclear antibody testing in a secondary setting
Lieve van Hoovels (Aalst, Belgium) 18.00–18.10
- EASI Austria & Germany Meeting** 18.30–19.30
(Conference room of the BioInnovationsZentrum in the neighbouring building)
(for EASI members only)

Friday
September 25

08.30–10.30

MEDIPAN Session
MULTIPARAMETRIC AUTOANTIBODY TESTING

Co-Chairs: D. Roggenbuck (Dahlewitz, Germany)
D. Bogdanos (Larissa, Greece)

08.30–08.50

Multiparametric autoimmune diagnostics: recent advances and complicating factors
Jan Damoiseaux (Maastricht, The Netherlands)

08.50–09.10

Microarray systems for autoantibody determination
Xavier Bossuyt (Leuven, Belgium)

09.10–09.30

Autoantibodies in liver autoimmunity: diagnostic, clinical and prognostic significance
Dimitrios Bogdanos (Larissa, Greece)

09.30–09.50

Multiplex antiphospholipid antibody testing using a hydrophobic membrane can differentiate patients with antiphospholipid syndrome from asymptomatic carriers
Dirk Roggenbuck (Dahlewitz, Germany)

09.50–10.10

Next generation ANA testing: combination of screening and confirmatory testing
Juliane Scholz (Senftenberg, Germany)
CANDIDATE FOR THE DRESDEN PRIZE

10.10–10.30

Automated analysis of DNA double-strand break formation (γ H2AX foci assay) in human peripheral blood mononuclear cells using the AKLIDES® system
Dirk Reinhold (Magdeburg, Germany)

10.30–11.00

COFFEE BREAK – POSTER AND EXHIBITION VIEWING

11.00–12.30

HOT TOPICS IN AUTOIMMUNITY II

Co-Chairs: E.K.L. Chan (Gainesville, USA)
F. Hiepe (Berlin, Germany)

11.00–11.30

Changes in intestinal tight junction permeability associated with industrial food additives explain the rising incidence of autoimmune diseases
Aaron Lerner, Torsten Matthias (Wendelsheim, Germany)

Autoinfectome: a tool to study the link between infection and autoimmunity
Dimitrios Bogdanos (Larissa, Greece) 11.30–12.00

Scleroderma-like skin fibrosis caused by genetic defect of ribonucleotide excision repair
Axel Roers (Dresden, Germany) 12.00–12.30

LUNCH BREAK – POSTER AND EXHIBITION VIEWING 12.30–14.00

Poster viewing

P56–P73 Organ-Specific Autoimmune Diseases

EASI Symposium

NEW INSIGHTS IN THE DIAGNOSIS OF CELIAC DISEASE

Co-Chairs: E. Mummert (Freiburg, Germany)
M. Mäki (Tampere, Finland)

Overview of celiac disease and the special challenges in diagnostics
Markku Mäki (Tampere, Finland) 14.00–14.30

Influence of diet in the first year of life on the development of celiac disease (PreventCD – major results)
Ilma R. Korponay-Szabo (Budapest, Hungary) 14.30–14.55

The industrial food additive microbial transglutaminase is immunogenic in children with celiac disease
Sandra Neidhöfer (Wendelsheim, Germany) 14.55–15.10

Diagnostics of celiac disease: Combining antibody tests and taking into account antibody levels improves serologic diagnosis of celiac disease
Xavier Bossuyt (Leuven, Belgium) 15.10–15.35

The influence of a gluten free diet on IgA mediated diseases
Renato Monteiro (Paris, France) 15.35–16.00

COFFEE BREAK 16.00–16.30

14.00–16.00

Friday
September 25

16.30–18.00

AUTOANTIBODY TESTING AND DIAGNOSTIC STRATEGIES

Co-Chairs: J. Damoiseaux (Maastricht, The Netherlands)
M. Mahler (San Diego, USA)

16.30–17.00

Autoantibody testing and methodological platforms:
a story with several versions
Luis E.C. Andrade (São Paulo, Brazil)

17.00–17.30

The spectrum of autoantibodies found in systemic
vasculitis: key advances and perspectives
Elena Csernok (Lübeck, Germany)

17.30–18.00

Diagnostic ANCA algorithms in daily clinical practice:
evidence, experience and effectivity
Jan Damoiseaux (Maastricht, The Netherlands)

18.00

**Departure to Dresden Castle
Social Dinner**

AUTOANTIBODIES IN RHEUMATOID ARTHRITIS AND CONNECTIVE TISSUE DISEASES

Co-Chairs: G. Steiner (Vienna, Austria)
J. Rönnelid (Uppsala, Sweden)

Autoantibodies in rheumatic arthritis as predictors of disease outcome and response to therapy
Günter Steiner (Vienna, Austria) 08.30–08.55

A comparative analysis of anti-CCP2 and anti-CEP-1 autoantibodies in various chronic arthritides
Ger J.M. Pruijn (Nijmegen, The Netherlands) 08.55–09.20

Autoantibody multiplexing in RA
Johan Rönnelid (Uppsala, Sweden) 09.20–09.45

The clinical usefulness of anti-DFS70 antibody detection
Nicola Bizzaro (Tolmezzo, Italy) 09.45–10.05

The role of autoantibodies and other biomarkers for a personalized treatment in SLE
Falk Hiepe (Berlin, Germany) 10.05–10.30

COFFEE BREAK - POSTER AND EXHIBITION VIEWING 10.30–11.00

AUTOANTIBODIES IN IDIOPATHIC MYOSITIS AND OVERLAP SYNDROMES

Co-Chairs: Tsuneyo Mimori (Kyoto, Japan)
Minoru Satoh (Kitakyushu, Japan)

Clinical significance and new detection system of autoantibodies in myositis and interstitial lung disease
Tsuneyo Mimori (Kyoto, Japan) 11.00–11.30

Idiopathic inflammatory myopathies: serological and clinical correlations. Analysis of a monocentric series
Anna Lisa Giuliani (Ferrara, Italy) 11.30–11.45

Risk factors for life prognosis of interstitial lung disease in dermatomyositis patients with anti-melanoma differentiation-associated gene 5 antibody
Yuji Hosono (Kyoto, Japan) 11.45–12.00

08.30–10.30

11.00–12.30

Saturday
September 26

12.00–12.15

Autoantibodies to the cohesin complex:
a novel myositis autoantigen
Shin Tanaka (Kitakyushu, Japan)

12.15–12.30

Detection of anti-Ku and other autoantibodies in a rare cohort of pediatric patients with autoimmune hepatitis (AIH) and systemic lupus erythematosus (SLE) or mixed connective tissue disease (MCTD) overlap
Gary Norman (San Diego, USA)

12.30–14.00

LUNCH BREAK – POSTER AND EXHIBITION VIEWING

14.00–15.00

AUTOANTIBODIES IN ORGAN SPECIFIC AUTOIMMUNE DISEASES AND TUMORS

Co-Chairs: N. Bizzaro (Tolmezzo, Italy)
M. Blüthner (Karlsruhe, Germany)

14.00–14.30

Diagnostic utility of autoantigen arrays for autoantibody profiling in cancer: current advances and future directions
Carlos A. Casiano (Loma Linda, USA)

14.30–14.45

Autoantibody profile of adult patients with childhood onset type 2 autoimmune hepatitis
Simon Lytton (Munich, Germany)

14.45–15.00

A highly sensitive screening test for excluding celiac disease in non high risk patients
Ellen G. van Lochem (Velp, The Netherlands)

15.00–16.00

Dresden Prize Award Ceremony & Conclusion

16.00–17.00

FAREWELL COFFEE BREAK

POSTER EXHIBITION

(second floor of the congress venue)

METHODICAL ASPECTS AND DIAGNOSTIC STRATEGIES

Non-Organ Specific Antibodies (ANA, ENA, aPL)

- P1** The International Consensus on Standardized Nomenclature of Antinuclear Antibody HEp-2 Cell Patterns (ICAP)
Edward K.L. Chan, Jan Damoiseaux, Orlando Gabriel Carballo, Karsten Conrad, Wilson de Melo Cruvinel, Paulo Luiz Carvalho Francescantonio, Marvin J. Fritzler, Ignacio Garcia-De La Torre, Manfred Herold, Tsuneyo Mimori, Minoru Satoh, Carlos A. von Mühlen, and Luis E.C. Andrade (Gainesville, USA)
- P2** The use of different commercial HEp-2 assays – A challenge for a consensus on HEp-2 cell pattern?
Benjamin Glauche, Nadja Röber, Christine Gräfe, Uta Kießling, Karsten Conrad (Dresden, Germany)
- P3** Good correlation between solid phase screening method and confirmatory assays for autoantibodies to nuclear antigens (ANA)
Carol Buchner, Tony Camacho, Carolina Auza, Chelsea Bentow, Gabriella Lakos, Michael Mahler (San Diego, USA)
- P4** Comparison of ANA detected by automated indirect immunofluorescence assay (IFA) and by solid phase assays in a cohort of challenging ANA IFA positive samples
Michael Mahler, Chelsea Bentow, Peter Martis, Tyler Webb, Luis Fernández Pereira, Manuel Espárrago Rodilla, Montaña Jimenez Alvaro, Inmaculada Alcalá Peña (San Diego, USA)
- P5** ANA testing – human eye versus computer
Werner Klotz, Manfred Herold (Innsbruck, Austria)

Wednesday
September 23
(12.20) until
Saturday,
September 26
(14.00)

- P6** Next generation ANA testing: combination of screening and confirmatory testing
Juliane Scholz, Kai Grossmann, Ilka Knütter, Rico Hiemann, Mandy Sowa, Nadja Röber, Stefan Rödiger, Peter Schierack, Dirk Reinhold, Dimitrios P. Bogdanos, Pier Luigi Meroni, Antonella Radice, Karsten Conrad, Dirk Roggenbuck (Senftenberg, Germany)
CANDIDATE FOR THE DRESDEN PRIZE
- P7** Added value of the automated indirect immunofluorescence for antinuclear antibody testing in a secondary setting
Matthijs Oyaert, Isabelle Ravelingien, Lieve van Hoovels (Aalst, Belgium)
CANDIDATE FOR THE DRESDEN PRIZE
- P8** ANA testing – how often is often enough?
Werner Klotz, Manfred Herold (Innsbruck, Austria)
- P9** One ELISA to catch them all – Secondary necrotic cell (SNEC) ELISA as a novel approach for autoantibody detection in systemic lupus erythematosus (SLE)
Mona Biermann, Sebastian Boeltz, Veronika Gröger, Benjamin Haugg, Gerhard Krönke, Johan van der Vlag, Martin Herrmann & Luis Munoz (Erlangen, Germany)
CANDIDATE FOR THE DRESDEN PRIZE
- P10** Characterization of antinuclear antibodies in patients with positive antimitochondrial antibodies
Ana Kozmar, Nada Tomić-Sremec (Zagreb, Croatia)
- P11** Lack of association of anti-nuclear autoantibodies with selected cardiovascular and metabolic parameters – findings of a multicentre population-based study in Germany
Nadja Röber, Manas K. Akmatov, Jakob Linseisen, Christa Meisinger, Wolfgang Ahrens, Kathrin Günther, Bastian Krone, Susanne Moebus, Nadia Obi, Dieter Flesch-Janys, Halina Greiser, Rudolf Kaaks, Rico Hiemann, Karsten Conrad, Frank Pessler (Dresden, Germany)

- P12** Automated evaluation of *Crithidia luciliae* IFT as novel application of the “EUROPattern-Suite”
Stefan Gerlach, Kai Affeldt, Lena Pototzki, Christopher Krause, Jörn Voigt, Johanna Fraune, Winfried Stöcker, Kai Fechner (Lübeck, Germany)
- P13** Comparison of EliA and QUANTA Flash for the detection of anti-PM/Scl and anti-RNA Pol III antibodies in a cohort of systemic sclerosis patients
Michael Mahler, Chelsea Bentow, Pascal Schippers, Iris Markusse, Andrea Seaman, Jeska de Vries-Bouwstra, Jaap Bakker (San Diego, USA)
- P14** Detection of myositis specific autoantibodies: comparison between line blot assay and “gold standard” immunoprecipitation method
Micaela Fredi, Angela Ceribelli, Ilaria Cavazzana, C. Mordenti, F. Ferrari, N. Carabellese, Angela Tincani, Minoru Satoh, Franco Franceschini (Brescia, Italy)
CANDIDATE FOT THE DRESDEN PRIZE
- P15** Re-formulated IFA mounting media has improved fade resistance
John Breneman, Cindy Liedstrand, Jeri Seiki, Richard Brandt, Xiaowen Guo (Benicia, USA)
- P16** Investigation of patient samples quality control usability in assessment of solid immunoassay performance consistency: experience from six months follow-up
Andrea Tesija Kuna, Ines Vukasovic, Nada Vrkic (Zagreb, Croatia)
- P17** PhDTM and PhD™ Ix System Sample Probe Carry-Over for IFA and EIA Assays
John Breneman, Shuxia Zhou, Cindy Liedstrand, Micah Majarian, Xiaowen Guo (Hercules, USA)
- P18** The BIOPLEX® 2200 antiphospholipid syndrome (APS) multiplex immunoassays demonstrate higher analytical sensitivity
M.A. Saunders, Maria Crisostomo, Elisa Barrett and H. Scholz (Benicia, USA)

Wednesday
September 23
(12.20) until
Saturday,
September 26
(14.00)

P19 Digital enumeration of double strand breaks via γ H2AX and associated biomarkers in a computing environment for reproducible research
Stefan Rödiger, Michał Burdukiewicz, Lisa Heiserich, Peter Schierack, Dirk Roggenbuck (Senftenberg, Germany)

Anti-DFS70 Antibodies

P20 High prevalence of anti-DFS70 antibodies among patients from a large U.S. reference laboratory
Chelsea Bentow, Erika Aron, Michael Mahler, Paula Correia, Eugene Karayev, Dmitry Karayev (San Diego, USA)

P21 Comparison of full-length and truncated antigens for the detection of anti-DFS70 antibodies
Navid Zohoury, Karen Carrasco, Erika Aron, Roger Albasa, Gabriella Lakos, Michael Mahler (San Diego, USA)

P22 DFS70 autoantibodies are rare in healthy Danish individuals but may still serve as a diagnostic aid
Anna Christine Nilsson, Anne Voss, Søren Thue Lillevang (Odense, Denmark)

P23 Anti-DFS70 antibodies without disease specific antibodies help to rule out ANA associated rheumatic diseases
Nadja Röber, Uwe Höpner, Martin Aringer, Sebastian Rudolph, Leonore Unger, Kirsten Lütke, Anett Gräßler, Frank Pessler, Michael Mahler, Karsten Conrad (Dresden, Germany)

ANCA

P24 How do first, second, and third generation ANCA assays relate in daily clinical practice?
Judith A.P. Bons, Pieter van Paassen, Jan Damoiseaux (Maastricht, The Netherlands)

- P25** Automated immunofluorescence microscopy for instant screening and confirmation of ANCA
Stefan Gerlach, Nicola Hochstrate, Kai Affeldt, Vanessa Viertel, Christopher Krause, Jörn Voigt, Johanna Fraune, Winfried Stöcker, Kai Fechner (Lübeck, Germany)
- P26** Evaluation of ANA and ANCA testing by the fully automated IIF system HELIOS®
Boris Gilburd, Nancy Agmon-Levin, Trischna Martins, A. Petzold, Torsten Matthias, Yehuda Shoenfeld (Wendelsheim, Germany)
- P27** Evaluation of a multiparametric spotimmunoassay (SIA) for the detection of autoantibodies in ANCA-associated vasculitis
Kirsten Kropf, Manuela Rejzek, Nadja Röber, Erik Höchel, Klemens Löster, Silvia Porstmann (Heidesee, Germany)

Organ-Specific Autoantibodies

- P28** Rapid detection and differentiation of autoimmune hepatitis type I, II and III using novel CytoBead® AIH assay
Mandy Sowa, Juliane Scholz, Kai Grossmann, Rico Hiemann, Nadja Röber, Karsten Conrad, Dirk Roggenbuck (Senftenberg, Germany)
CANDIDATE FOR THE DRESDEN PRIZE
- P29** Indirect immunofluorescence assay on fixed HEp-2 M4 cells for routine diagnostics of anti muscle-specific kinase autoantibodies in Myasthenia gravis
Sandra George, S. Paulick, Ilka Knütter, Nadja Röber, Rico Hiemann, Dirk Roggenbuck, Karsten Conrad and Jan-Heiner Küpper (Senftenberg, Germany)
CANDIDATE FOR THE DRESDEN PRIZE
- P30** Detection of anti-MuSK antibodies by a novel quantitative ELISA
Jan Damoiseaux, Joyce Giesen, Marc de Baets (Maastricht, The Netherlands)

Wednesday
September 23
(12.20) until
Saturday,
September 26
(14.00)

- P31** Expression of nicotinic acetylcholine receptor subunits in HEp-2 cells for immunodetection of autoantibody specificities in sera from Myasthenia gravis patients
Sandra George, M. Noack, M. Vanek, J. Rentzsch, Nadja Röber, Karsten Conrad, Dirk Roggenbuck and Jan-Heiner Küpper (Senftenberg, Germany)
- P32** Quantification of autoantibodies to receptors of the insulin receptor family in patients with insulin resistance
Christian Schwiebert, Tim Welsink, A. Schuette, N.P. Becker, R.J. Brown, P. Gorden, W.B. Minich, L. Schomburg (Berlin, Germany)
- P33** Development of a quantitative immunofluorescence-based assay for the detection of islet autoantibodies
Katerina Vafia, Anne Eugster, Paul Czernichow, Marie-Jose Lecomte, Marc Bickle, Ezio Bonifacio (Dresden, Germany)
- CANDIDATE FOR THE DRESDEN PRIZE

SYSTEMIC AUTOIMMUNE DISEASES

Rheumatoid Arthritis

- P34** Autoantibodies to two novel peptides in seronegative and early rheumatoid arthritis
Liesbeth M. de Winter, Wendy L.J. Hansen, Hanna W. van Steenberg, Piet Geusens, Jan Lenaerts, Klaartje Somers, Piet Stinissen, Annette H.M. van der Helm-van Mil, and Veerle Somers (Diepenbeek, Belgium)
- CANDIDATE FOR THE DRESDEN PRIZE
- P35** Determining ACPA levels using QUANTA Flash CCP3, and their impact on likelihood of rheumatoid arthritis in a large Swiss patient population
Michael Mahler, Chelsea Bentow, Peter Martis, Tyler Webb, Pascale Roux-Lombard, Sylvette Bas, Cem Gabay (San Diego, USA)
- P36** Anti-CARP antibodies identify a significant number of seronegative EORA and PMR patients
Marcos López-Hoyos, Lorena Álvarez-Rodríguez, Michael Mahler, Silvia Torices, Jaime Calvo-Alén, Ignacio Villa, Andrea Seaman, Victor Martínez-Taboada (San Diego, USA)

- P37** Biological treatment and QuantiFERON-TB Gold test in 2011–2014
Darina Kozáková, E. Zanova, I. Rybar, M. Polanova, J. Rovensky (Piestany, Slovakia)
- P38** Anti-drug antibodies in patients treated with TNF inhibitors
Werner Klotz, L. Boso, Th. Haueis, G. Zangerl, Manfred Herold (Innsbruck, Austria)

Systemic Lupus Erythematosus

- P39** Mathematical model of systemic lupus erythematosus (SLE) development: focus on the dynamics of immune complex formation and Th17 immune response
Sergei Kuznetsov, V.I. Shishkin (St. Petersburg, Russia)
CANDIDATE FOR THE DRESDEN PRIZE
- P40** Identification of homogeneous systemic lupus erythematosus (SLE) patient groups using clustered autoantibody reactivities
Petra Budde, Hans-Dieter Zucht, Daniel Chamrad, Anna Telaar, Stefan Vordenbäumen, Peter Schulz-Knappe, Matthias Schneider (Dortmund, Germany)
- P41** QUANTA Flash anti-dsDNA chemiluminescent immunoassay results show stronger association with lupus nephritis than traditional ELISA
Chelsea Bentow, Gabriella Lakos, Peter Martis, Milagros Garcia, Odette Viñas, Gerard Espinosa, Ricard Cervera, John G. Hanly, Michael Mahler (San Diego, USA)
CANDIDATE FOR THE DRESDEN PRIZE
- P42** The oxidative burst mediates anti-inflammatory clearance of dead cells in a mouse model of systemic lupus erythematosus and inflammatory arthritis
Deborah Kienhöfer, Jonas Hahn, Luis Munoz, Rikard Holmdahl, Georg Schett, and Markus Hoffmann (Erlangen, Germany)
CANDIDATE FOR THE DRESDEN PRIZE

Wednesday
September 23
(12.20) until
Saturday,
September 26
(14.00)

Systemic Sclerosis

- P43** Frequency and clinical profiles of autoantibody (AA) negative and anti-nuclear antibody (ANA) negative patients in an Australian cohort of Systemic Sclerosis (SSc) patients
Karen A. Patterson, P.J. Roberts-Thomson, S. Lester, J.A. Tan P. Hakendorf, M. Rischmueller, J. Zochling, J. Sahhar, P. Nash, J. Roddy, C. Hill, M. Nikpour, W. Stevens, S.M. Proudman, J.G. Walker (Bedford Park, Australia)
- P44** Expanding the autoantibody testing profile in systemic sclerosis: results from the Leiden Systemic Sclerosis cohort
Jaap Bakker, Pascal Schippers, Iris Markusse, Jeska de Vries-Bouwstra (Leiden, The Netherlands)
- P45** B regulatory cell deficiency inversely correlates with antigen-specific autoantibody responses in patients with systemic sclerosis
Athanasios Mavropoulos, Christos Liaskos, Theodora Simopoulou, Wolfgang Meyer, Areti Varna, Christina Katsiari, Dimitrios P. Bogdanos, Lazaros I. Sakkas (Larissa, Greece)
- P46** Autoantibodies to a novel Th/To derived antigen identify patients with limited cutaneous form of systemic sclerosis and late pattern nailfold changes
Martial Koenig, Jean-Luc Senécal, Gemma Perez, Marvin J Fritzler, Andrea Seaman, Chelsea Bentow, Tony Camacho, Michael Mahler (San Diego, USA)
- P47** Human cytomegalovirus specific antibody responses in patients with systemic sclerosis
Christos Liaskos, Emmanouela Marou, Georgios Euthymiou, Theodora Simopoulou, Christina Katsiari, Wolfgang Meyer, Dimitrios P. Bogdanos, Lazaros I. Sakkas (Larissa, Greece)
- P48** ssDNA autoantibodies in patients with systemic sclerosis
Christos Liaskos, Maria Michalopoulou, Theodora Simopoulou, Athanasios Mavropoulos, Evaggelia Georgiou, Giannis Alexiou, Gary L. Norman, Dimitrios P. Bogdanos, Lazaros I. Sakkas (Larissa, Greece)

- P49** Scleroderma specific autoantibodies in patients affected by morphea
Ilaria Cavazzana, M.C. Arisi, Micaela Fredi, M.E. Cerutti, F. Ferrari, N. Carabellese, Angela Tincani, P.G. Calzavara-Pinton, Franco Franceschini (Brescia, Italy)
- P50** Autoantibodies against tubular basement membrane in progressive systemic sclerosis are directed against Scl-70
Lars Komorowski, M. Scharf, B. Teegen, K. Rentzsch, W. Schlumberger, W. Stöcker (Lübeck, Germany)
- P51** Anti-Th/To (Rpp25 and Rpp38) antibodies in a large cohort of Dutch systemic sclerosis patients
Jaap Bakker, Andrea Seaman, Iris Markusse, Pascal Schippers, Chelsea Bentow, Jeska de Vries-Bouwstra, Michael Mahler (San Diego, USA)
- P52** Anti-Th/To (Rpp25, Rpp38, and hPop1) antibodies in a large cohort of North American systemic sclerosis patients
Michael Mahler, Andrea Seaman, Chelsea Bentow, Haiyan Hou, Marie Hudson, Shervin Assasi, Marvin J. Fritzler (San Diego, USA)
- P53** Development of a qualitative ELISA for the detection of anti-BICD2 autoantibodies in systemic sclerosis
Daniel Wirtz, Johannes Schulte-Pelkum, Petra Budde, Peter Schulz-Knappe, Hans-Dieter Zucht, Suzana Jordan, Oliver Distler, Britta Maurer, Nicolas Hunzelmann, Karsten Conrad, Matthias Schneider (Dortmund, Germany)
- P54** Pulmonary involvement in systemic sclerosis: could uncommon antibodies be useful?
Noel Lorenzo Villalba, Patricia Nogueira Salgueiro, Taiomara Fernández González, Jesús Santana Benítez, Casimira Domínguez Cabrera, Inmaculada Alarcón Torres, María Belén Alonso Ortiz (Las Palmas, Spain)

Wednesday
September 23
(12.20) until
Saturday,
September 26
(14.00)

- P55** Autoimmune liver disease-related autoantibodies in patients with systemic sclerosis
Christos Liaskos, Athanasios Goutzourelas, Theodora Simopoulou, Maria Barmakoudi, Evaggelia Georgiou, Wolfgang Meyer, Christina Katsiari, Dimitrios P. Bogdanos, Lazaros I. Sakkas (Larissa, Greece)

ORGAN SPECIFIC AUTOIMMUNE DISEASES

Autoimmune Neurologic Diseases

- P56** Prevalence and clinical impact of anti-retinal antibodies in uveitis
Josianne C.E.M. ten Berge, Marco W.J. Schreurs, Jacolien Vermeer, Magda A. Meester-Smoor, Aniki Rothova (Rotterdam, The Netherlands)
[CANDIDATE FOR THE DRESDEN PRIZE](#)
- P57** Identification of novel candidate antibody biomarkers in spinal cord injury
Ilse Palmers, Elke Ydens, Bart Depreitere, Andrew Maas, Kim Timmermans, Matthijs Kox, Eric Put, Sven Hendrix, Veerle Somers (Diepenbeek, Belgium)
[CANDIDATE FOT THE DRESDEN PRIZE](#)
- P58** Neurochondrin is a target for autoantibodies in a unique form of autoimmune cerebellitis associated with brainstem syndrome
Ramona Miske, N. Melzer, M. Scharf, H. Wiendl, S. Meuth, M. Synofzik, I.M. Dettmann, S. Mindorf, Y. Denno, B. Teegen, Winfried Stöcker, S. Brakopp, Christian Probst, and Lars Komorowski (Lübeck, Germany)
[CANDIDATE FOT THE DRESDEN PRIZE](#)
- P59** Anti-SPAG16 antibodies in primary progressive multiple sclerosis are associated with an elevated progression index
Laura de Bock, Judith Fraussen, Luisa M. Villar, José C. Álvarez-Cermeño, Bart van Wijmeersch, Vincent van Pesch, Piet Stinissen and Veerle Somers (Diepenbeek, Belgium)
[CANDIDATE FOT THE DRESDEN PRIZE](#)

- P60** Helicobacter pylori-specific antibody responses in patients with multiple sclerosis: relevance to disease pathogenesis
Georgios Euthymiou, Euthymios Dardiotis, Emmanouela Marou, Christos Liaskos, Wolfgang Meyer, Lazaros I. Sakkas, Georgios Hadjigeorgiou, Dimitrios P. Bogdanos (Larissa, Greece)
- P61** Diagnostic and prognostic significance of Immunoglobulin light-chain production in multiple sclerosis
Sergey V. Lapin, V.D. Nazarov, G.S. Makshakov, E.A. Surkova, E.P. Evdoshenko (St. Petersburg, Russia)

Autoimmune Gastrointestinal and Liver Diseases

- P62** The world incidence of celiac disease is increasing
Aaron Lerner, Patricia Jeremias, Torsten Matthias (Wendelsheim, Germany)
- P63** The site of duodenal inflammation in coeliac disease
Fabiana Ziberna, Luigina De Leo, Marianna Saleme, Vincenzo Villanacci, Sara Quaglia, Vatta Serena, Stefano Martellosi, Alessandro Ventura, Tarcisio Not (Trieste, Italy)
- P64** Short gluten challenge to support celiac disease diagnosis
Fabiana Ziberna, Luigina De Leo, Gianfrani Carmen, Stefania Picascia, Sara Quaglia, Serena Vatta, Stefano Martellosi, Giorgio Cozzi, Alessandro Ventura, Tarcisio Not (Trieste, Italy)
- P65** Epitopes of human and microbial transglutaminases are similarly recognized by celiac disease sera
Patricia Jeremias, Kai Prager, Sandra Neidhöfer, Torsten Matthias (Wendelsheim, Germany)
- P66** The 3-dimensional structures of human and microbial transglutaminases complexed to gliadin are similar
Patricia Jeremias, Sandra Neidhöfer, Torsten Matthias (Wendelsheim, Germany)

CANDIDATE FOT THE DRESDEN PRIZE

Wednesday
September 23
(12.20) until
Saturday,
September 26
(14.00)

- P67** Antibodies against neo-epitope TTG complexed to gliadin are more reliable than anti-TTG for the diagnosis of pediatric celiac disease
Torsten Matthias, Patricia Jeremias, Sandra Neidhöfer, Aaron Lerner (Wendelsheim, Germany)
- P68** Comparison of the reliability of celiac disease serology to reflect intestinal damage
Torsten Matthias, Patricia Jeremias, Sandra Neidhöfer, Aaron Lerner (Wendelsheim, Germany)
- P69** The break in intestinal tight junction permeability by industrial food additives explains the rising incidence of autoimmune diseases
Aaron Lerner, Torsten Matthias (Wendelsheim, Germany)
- P70** The industrial food additive microbial transglutaminase is immunogenic in children with celiac disease
Aaron Lerner, Torsten Matthias, Patricia Jeremias, Sandra Neidhöfer (Wendelsheim, Germany)
- P71** Prevalence and clinical relevance of autoantibodies directed against glycoprotein 2 isoforms in pediatric patients with inflammatory bowel disease
Nadja Röber, Martin W. Laass, Alexander Goihl, Josefine Jahn, Lydia Noß, Dirk Reinhold, Dirk Roggenbuck, Karsten Conrad (Dresden, Germany)
- P72** ASCA and pancreatic specific autoantibodies as markers of paratuberculosis, the ruminant model of Crohn's disease
Christos Liaskos, Maria G. Mytilinaiou, Vassiliki Spyrou, Andreas L. Koutsoumpas, Labrini V. Athanasiou, Athanasios Mavropoulos, Georgios S. Amiridis, Dirk Roggenbuck, Charalambos Billinis, Dimitrios P. Bogdanos (Larissa, Greece)

Wednesday
September 23
(12.20) until
Saturday,
September 26
(14.00)

- P73** Diagnostic significance of autoimmune rheumatic diseases-related autoantibodies in patients with inflammatory bowel diseases
Polychronis Pavlidis, Christos Liaskos, Zakera Shums, Andreas L. Koutsoumpas, Stamatina Rentouli, Maria G. Mytilinaïou, Athanasios Mavropoulos, Gary L. Norman, Alastair Forbes, Dimitrios P. Bogdanos (Larissa, Greece)
- P74** PR3-ANCA: A biomarker for the differentiation of ulcerative colitis and Crohn`s disease
Michael Mahler, Chelsea Bentow, Daniël Blockmans, Vera Ballet, Severine Vermeire, Xavier Bossuyt (San Diego, USA)
- P75** Prevalence and significance of PR3-ANCA in children and adolescents with inflammatory bowel disease
Josefine Jahn, Nadja Röber, Karsten Conrad, Martin W. Laass (Dresden, Germany)
CANDIDATE FOT THE DRESDEN PRIZE
- P76** Application of a liver autoantibody profile in the diagnostic work up of inflammatory bowel diseases, primary sclerosing cholangitis and autoimmune sclerosing cholangitis
Christos Liaskos, Foteini D. Kalousi, Dimitra P. Mitsiou, Polychronis Pavlidis, Andreas L. Koutsoumpas, Maria G. Mytilinaïou, Athanasios Mavropoulos, Alastair Forbes, Dimitrios P. Bogdanos (Larissa, Greece)
- P77** Diagnostic significance of ASGPR, filamentous actin and dsDNA autoantibodies in children with autoimmune hepatitis type 1
Christos Liaskos, Maria G. Mytilinaïou, Maria Michalopoulou, Tassos Grammatikopoulos, Andreas L. Koutsoumpas, Athanasios Mavropoulos, Eirini I. Rigopoulou, Giorgina Mieli-Vergani, Diego Vergani, Dimitrios P. Bogdanos (Larissa, Greece)

General Information

Symposium Venue

The modern Center of Regenerative Therapies Dresden (CRTD) is located near to the University hospitals in the district Johannstadt.

Address of the symposium venue:

CRTD

Fetscherstrasse 105

01307 Dresden

Workshop Venue (September 22, 2015)

The modern BioInnovationsZentrumDresden is located in the neighbouring building of the symposium venue (CRTD).

Address of the workshop venue:

BioInnovationsZentrumDresden

Tatzberg 47

01307 Dresden

Registration office

September 23: 08.00–21.00

September 24: 08.00–19.00

September 25: 08.00–17.45

September 26: 08.00–18.00

Phone on site

+49 160 98 35 87 47 and +49 351 458 82 600

Chairman

Karsten Conrad, Germany

Co-Chairmen

Luis E.C. Andrade, Brazil

Edward K.L. Chan, USA

Ger J. M. Pruijn, The Netherlands

Günter Steiner, Austria

Honorary Chair

Yehuda Shoenfeld, Israel

International Advisory Board

Nicola Bizzaro, Italy

Martin Blüthner, Germany

Dimitrios P. Bogdanos, Greece

Xavier Bossuyt, Belgium

Carlos A. Casiano, USA

Elena Csernok, Germany

Jan Damoiseaux, The Netherlands

Manfred Herold, Austria

Martin Herrmann, Germany

Falk Hiepe, Germany
Michael Mahler, USA
Pier Luigi Meroni, Italy
Tsuneyo Mimori, Japan
Carlos Alberto von Mühlen, Brazil
Johan Rönnelid, Sweden
Minoru Satoh, Japan
Joanna Sheldon, UK

Rico Hiemann
Thorsten Krieger
Robert Lange
Ulrich Sack
Clemens August Schulze Lohoff
Andreas Schwab
Werner Schößler
(Members of the Advisory Committee of the GFID e.V.)

English, no simultaneous translation

Silke Zwjatkow
GFID e.V.
Wasastraße 14
01219 Dresden, Germany
Phone +49 351 26 32 279
Fax +49 351 26 32 280
e-mail: gfiv.ev@me.com

Participants	EUR 450
GFID members	EUR 420
Students/Residents	EUR 220
One day ticket	EUR 140

(includes unlimited access to all scientific sessions, welcome reception, industrial exhibition, one copy of the electronic edition of the conference book and one copy of the book „Autoantibodies in Systemic Autoimmune Diseases – A Diagnostic Reference“, 3rd edition.)

Members of the Dresden University and the CRTD are free of charge.

**National
Organizing
Committee**

Language

**Organization
(Registration,
Reservation,
Exhibition)**

Registration fee
(on site)

Social programme

Wednesday,
September 23, 2015
18.00

Get together in the Center of Regenerative Therapies
Dresden (CRTD)

Friday, September
25, 2015
18.00

Social Dinner in Dresden Castle

(90 EUR)

Dresden Castle or Royal Palace (in German: Dresdner Residenzschloss or Dresdner Schloss) is one of the oldest buildings in Dresden. For almost 400 years, it has been the residence of the electors (1547–1806) and kings (1806–1918) of Saxony of the Albertine line of the House of Wettin. It is known for the different architectural styles employed, from Baroque to Neo-renaissance. Today, the residential castle is a museum complex that contains the Historic and New Green Vault, the Numismatic Cabinet, the Collection of Prints, Drawings and Photographs and the Dresden Armory with the Turkish Chamber.

18.00

Departure by bus starting from the congress venue

18.30

Musical Champagne Reception and visit of the Castle

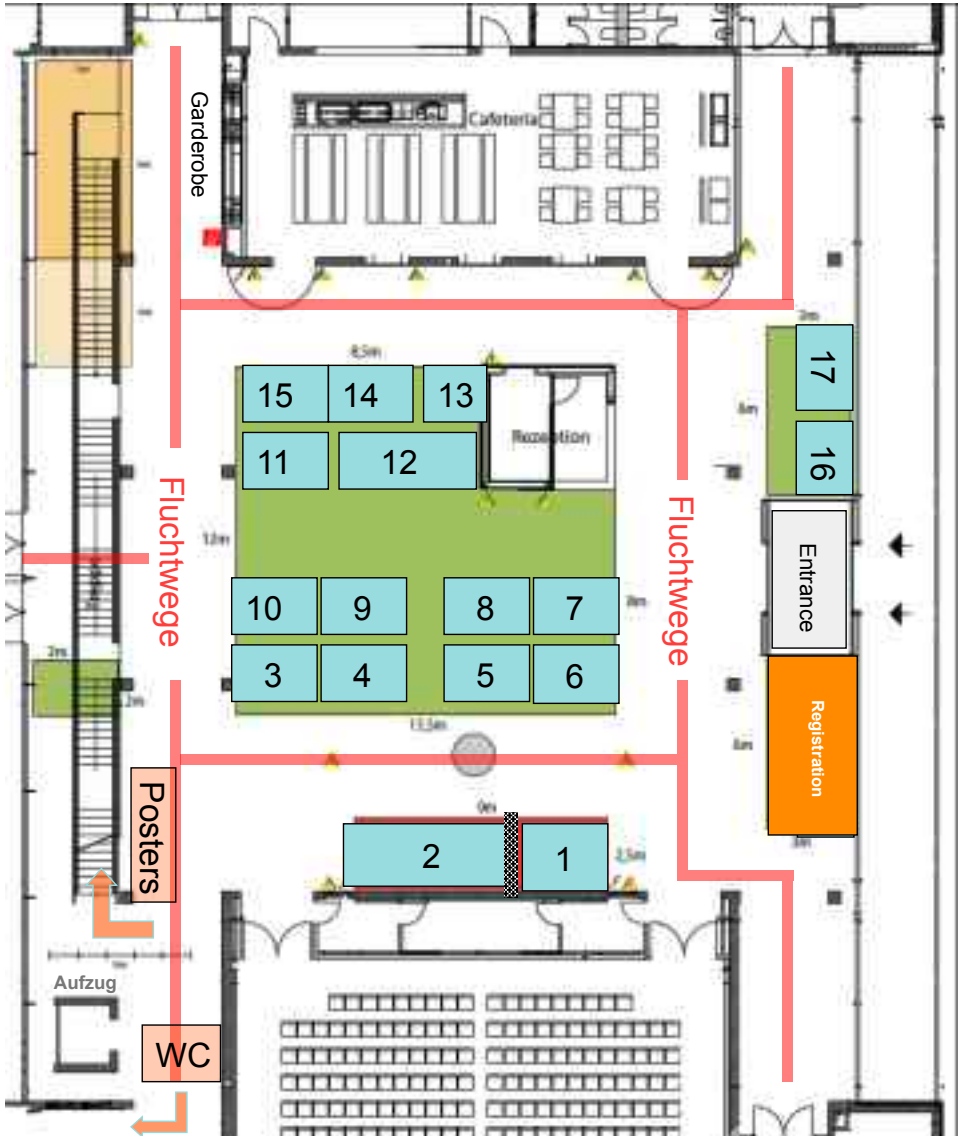
19.30

Social Dinner (no formal dresscode)

22.00

Return by bus to the CRTD, InterCity hotel and University Guesthouse (The Steigenberger de Saxe hotel is situated in a walking distance of 300 m). The well sorted art, book and gift shop (with books in a number of languages) in the castle is open until 21.00 h. Please note that the castle is not heated. Depending on the weather, we recommend a jacket.

Industrial Exhibition (1st floor of CRTD)



The following companies participate in the industrial exhibition and/or have made a generous sponsorship (in alphabetical order):

A.Menarini Diagnostics Deutschland.

Division der BERLIN-CHEMIE AG (Berlin, Germany)
www.menarini.com

Aesku.Diagnostics GmbH & Co. KG

(Wendelsheim, Germany)
www.aesku.com

Bio-Rad Laboratories, Inc. (Hercules, USA)

www.bio-rad.com

BioSystems S.A. (Barcelona, Spain)

www.biosystems.com

Bühlmann Laboratories AG (Schönenbuch, Switzerland)

www.buhlmannlabs.ch

Diarect AG (Freiburg, Germany)

www.diarect.com

DLD Diagnostika GmbH (Hamburg, Germany)

www.dld-diagnostika.de

D-tek s.a. (Mons, Belgium)

www.d-tek.de

Euro Diagnostica AB (Malmö, Sweden)

www.eurodiagnostica.com

EUROIMMUN Medizinische Labordiagnostika AG

(Lübeck, Germany)
www.euroimmun.de

GA Generic Assays GmbH (Dahlewitz, Germany)

www.genericassays.com

Human Gesellschaft für Biochemica und Diagnostica mbH (Wiesbaden, Germany)

www.human.de

INOVA Diagnostics, Inc. (San Diego, USA)

www.inovadx.com

Medipan GmbH (Dahlewitz, Germany)

www.medipan.de

MIKROGEN GmbH (Neuried, Germany)
www.mikrogen.de

ORGENTEC Diagnostika GmbH (Mainz, Germany)
www.orgentec.com

PEPPERPRINT GmbH (Heidelberg, Germany)
www.pepperprint.com

Pfizer Pharma GmbH (Berlin, Germany)
www.pfizer.de

Phadia GmbH (Freiburg, Germany)
www.thermoscientific.com/phadia.de

Protagen AG (Dortmund, Germany)
www.protagen.com

ravo Diagnostika GmbH (Freiburg, Germany)
www.ravo.de

Seramun Diagnostica GmbH (Heidesee, Germany)
www.seramun.com

TestLine Clinical Diagnostics Ltd. (Brno, Czech Republic)
www.testlinecd.com

The Binding Site GmbH (Schwetzingen, Germany)
www.bindingsite.de

We thank these companies for helping to make this symposium successful.

www.gfid-ev.de

OUT OF THE DARK
INTO THE LIGHT

HELIOS

BOOTH
16

THE **ONLY**
FULLY AUTOMATED
IFA PROCESSOR



INSTALLATIONS IN MORE
THAN 20 COUNTRIES

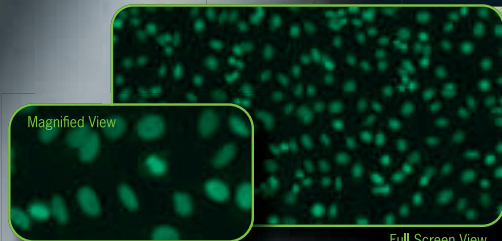
WWW.AESKU.COM



AESKU.SYSTEMS
THE DIAGNOSTIC AUTOMATION COMPANY

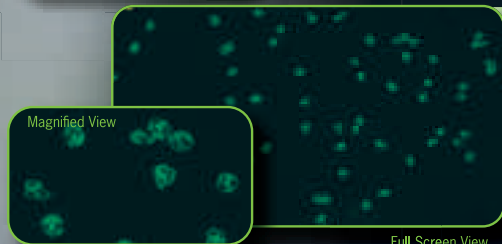
HELIOS® is currently not available in the USA (subject to FDA clearance).

ANA



Full Screen View

ANCA



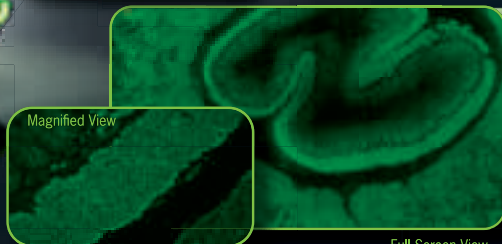
Full Screen View

r-FLKS



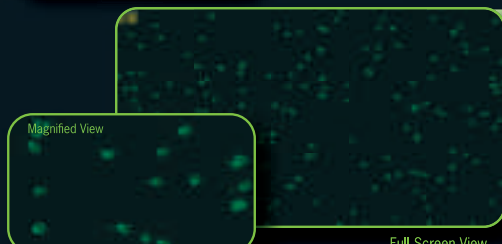
Full Screen View

EMA



Full Screen View

rdDNA



Full Screen View