

# Diagnostic Value of Antibodies against ribosomal Protein P in SLE

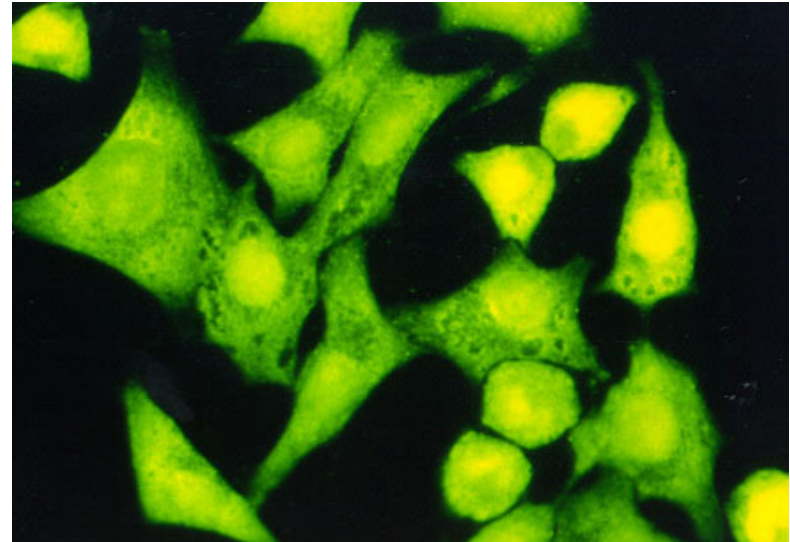
**Torsten Witte**, for the German EASI group (Ingrid Frank, Karsten Conrad, Arno Kromminga, Bettina Becker, Elena Csernok, Falk Hiepe, Gerald Messer, Rudolf Mierau, Michael Seyfarth, Thorsten Krieger, Reinhold E. Schmidt, Ulrich Sack)



**Medizinische Hochschule  
Hannover**

# Facts on antibodies against Rib-P

- very specific for SLE (up to 100 %)
- Prevalence varies between 3 and 40 %
- Correlate with disease activity and possibly with organ involvement (renal, hepatic, CNS)



# German EASI Group

- Goal of European Autoimmunity Standardisation Initiative (EASI):  
Standardization and improvement of diagnostic procedures in autoimmune diseases
- Objective of a prospective study of Rib-P antibodies: To evaluate the clinical usefulness of autoantibodies against ribosomal protein P (RibP) in patients with suspected SLE

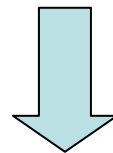
# Evaluation of the EliA RibP test system in diagnostics of SLE

- Inclusion of all the patients referred to our clinic due to the GPs suspicion of SLE
- At least one clinical criterion of the ACR criteria for the classification of SLE fulfilled



**EliA RibP**

Further diagnostic procedures and diagnosis by rheumatologist, not knowing the result of the RibP test

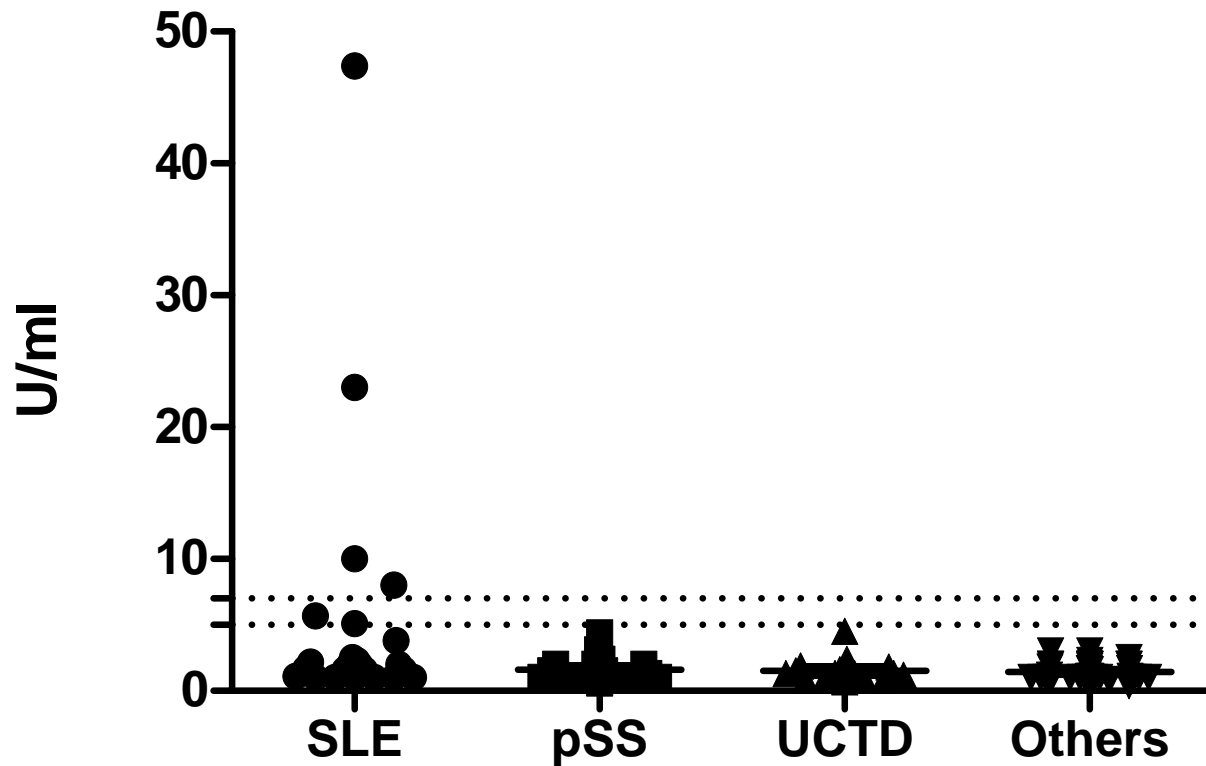


Statistical evaluation by a second rheumatologist

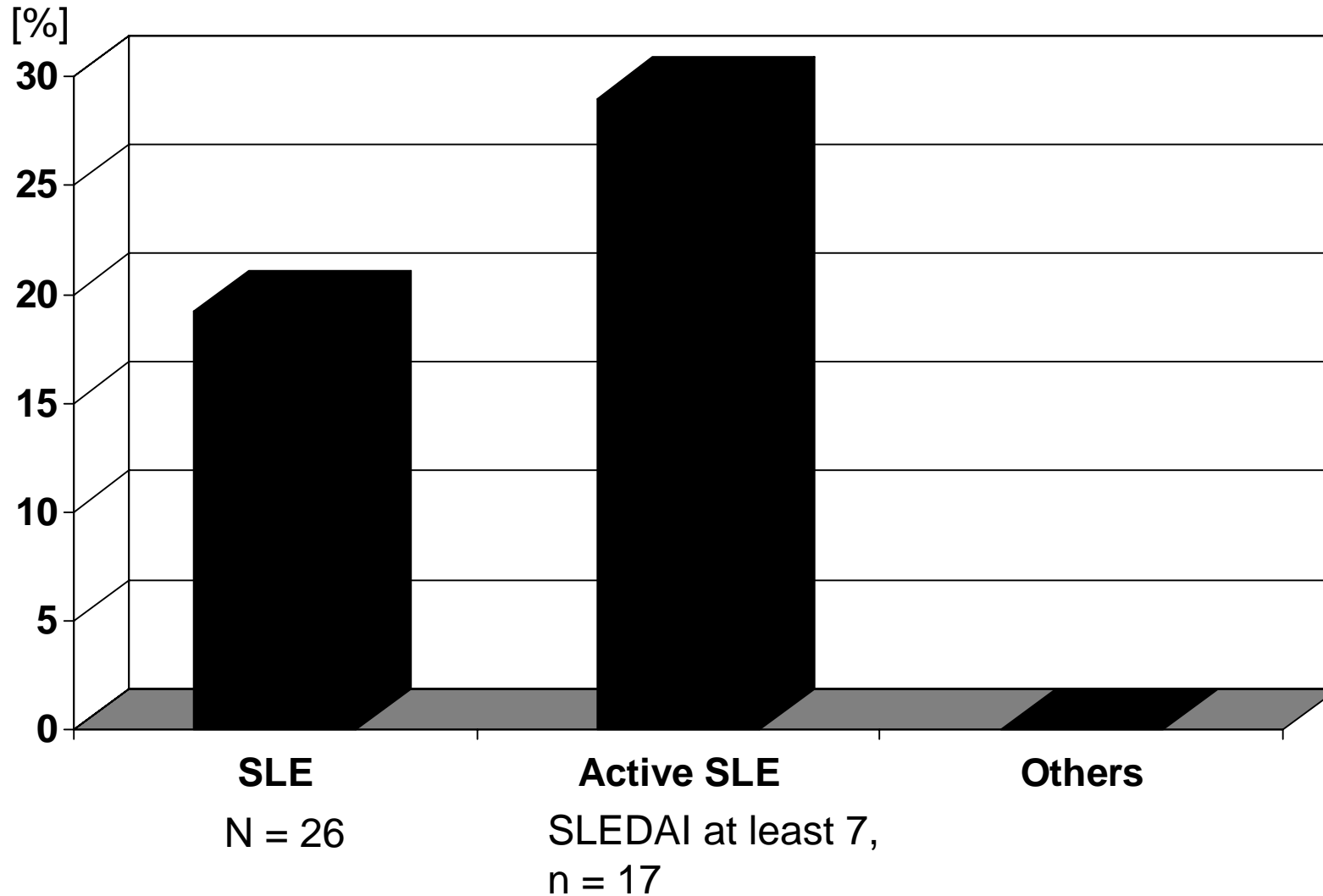
# Details of the patients enrolled

- 99 patients, 86 female
- Average age 35 years
- Arthritis was the most common possible manifestation of SLE (60 %)
- Most common disease entities: SLE (26), Sjögren`s syndrome (18), UCTD (17).

# Prevalence of Rib-P antibodies



# Prevalence of Rib-P antibodies



# Associations of Rib-P antibodies

	Rib-P <sup>+</sup>	Rib-P <sup>-</sup>
Antibodies against dsDNA (Farr assay)	4/5	10/21
Sm antibodies	1/5	2/21
Glomerulonephritis	2/5	2/21
Malar rash	1/5	5/21



---

# Conclusions

- No new „hidden“ SLE case uncovered by RibP antibody test
- However, RibP antibodies are highly specific for SLE and more sensitive than antibodies against Sm

---

# Thanks to:

Phadia GmbH for the support of the study