

4TH DRESDEN SYMPOSIUM ON AUTOANTIBODIES

21st - 24th October 1998

Programme



4TH DRESDEN SYMPOSIUM ON AUTOANTIBODIES

21st - 24th October 1998

Programme



4TH DRESDEN SYMPOSIUM ON AUTOANTIBODIES

21st - 24th October 1998

Programme



4th Dresden Symposium on Autoantibodies

Dresden, October 21-24, 1998

LOCAL ORGANIZING COMMITTEE

K. Conrad
Chairman

J. Rohayem

SCIENTIFIC PROGRAMME COMMITTEE

K. Conrad (Dresden)

R. L. Humbel (Luxembourg)

M. Meurer (Dresden)

E. M. Tan (La Jolla)

Y. Shoenfeld (Tel Hashomer)

VENUE

Treff Hotel Dresden

Wilhelm-Franke-Str. 90

D - 01219 Dresden

Tel.: +49-(0)351-4782-700

Fax: +49-(0)351-4782-634

WELCOME

On behalf of the Organizing and Scientific Committees it is a great pleasure for me to welcome you in Dresden for the 4th Dresden Symposium on Autoantibodies.

Autoantibodies are diagnostic markers, useful reagents for identifying new cellular proteins and may be involved in the pathogenesis of autoimmune diseases. Therefore, autoantibody research is an essential part of clinical medicine, clinical immunology as well as molecular and cell biology. The symposium will provide a forum for presentation and discussion of newer results in the basic and applied research on autoantigens and autoantibodies.

The role of the cleavage of intracellular autoantigens in apoptotic and necrotic cell death, of the idiotypic network, of natural cryptic antibodies and masking inhibitors and of some autoantibody specificities as well as the possible mechanisms and potential effects of autoantibody penetration into living cells will be discussed. Furthermore, the identification and possible role of new autoantigen-autoantibody systems will be described. Reviews and new results regarding autoantibodies as diagnostic markers in connective tissue, bullous skin, liver, gastrointestinal, endocrinological and neurological diseases will be represented. Especially, the progress in the research and diagnosis of bullous skin disorders, type I diabetes, coeliac disease, peripheral neuropathies, tumors and diseases with autoantibodies to ion channel proteins will be critically reviewed.

We are sure that the next few days offer an inspiring atmosphere for a productive meeting and that you will enjoy the Symposium as well as your stay in Dresden.

Welcome to Dresden.

Karsten Conrad

- 08:00 Registration
- 09:00 Opening/Welcome
- 09:15 - 12:00 **Autoantigens, autoantibodies and their role in the pathogenesis of autoimmune diseases
Part I**
- Chair: E. M. Tan (La Jolla, USA)
A. Ruiz-Argüelles (Puebla, Mexico)
-

MAIN LECTURES

- 09:15 Autoantibodies as messengers from the immune system and incidental participants in pathogenesis
E. M. Tan (La Jolla, USA)
- 09:50 Penetration of autoantibodies into living cells
A. Ruiz-Argüelles, D. Alarcon-Segovia (Puebla, Mexico)

SHORT ORAL COMMUNICATIONS

- 10:25 The pathogenetic role of anti-phospholipid/ β 2GP-I antibodies: Therapeutic implications in APS
Y. Shoenfeld (Tel Hashomer, Israel)
- 10:40 Human monoclonal antiphospholipid antibodies (mAPA) show different potential to induce procoagulant activity in monocytes
K. J. Lackner, C. Scheckenhofer, G. Schmitz (Regensburg, Germany)
- 10:50 Patients with preeclampsia develop agonist-like autoantibodies directed against the second extracellular loop of the angiotensin AT₁ receptor: How do realize antibodies directed against hormone receptors their agonist-like effect?
G. Wallukat, V. Homuth, J. Müller, E. Nissen, D. Neichel, F. C. Luft, J. Hoebecke (Berlin, Germany; Strasbourg, France)
- 11:05 IgG-mediated cytotoxicity of antineuronal (anti-Hu) antibody-positive sera to myenteric plexus cultures
M. Klotz, F. Blaes, D. Mergner, S. H. Schäfer (Homburg, Germany)

WEDNESDAY, 21ST OCTOBER 1998

11:15 The pathogenesis of acute Epstein-Barr virus infection: Oxygen injury to endothelial cells due to autoantibodies against manganese superoxide dismutase
A. Dalpke, R. Thomssen, K. Ritter (Göttingen/Aachen, Germany)

11:25 Neurotoxicity and autoantibodies to nervous system proteins: From biomarkers to pathogenesis
H. A. N. El-Fawal, A. de Feo, M. Y. Shamy (New York, USA; Alexandria, Egypt)

11:45 - 12:45 Poster Session: Posters A1-A13

12:45 - 13:45 Lunch break

13:45 - 15:30 **Autoantigens, autoantibodies and their role in the pathogenesis of autoimmune diseases**
Part II

Chair: Y. Shoenfeld (Tel Hashomer, Israel)
C. A. Casiano (Loma Linda, USA)

MAIN LECTURES

13:45 Cleavage of intracellular autoantigens in apoptotic and necrotic cell death
C. A. Casiano (Loma Linda, USA)

14:20 Role of the idiotypic network in the regulation and development of autoimmune diseases
Y. Shoenfeld (Tel Hashomer, Israel)

14:55 Natural cryptic antibodies, masking inhibitors and autoimmunity
H. M. Cheng (Kuala Lumpur, Malaysia)

15:30 - 15:50 Coffee break

**15:50 - 18:30 Autoantigens, autoantibodies and their role in the pathogenesis of autoimmune diseases
Part III**

Chair: E. K. L. Chan (La Jolla, USA)
A. Lamond (Dundee, UK)

MAIN LECTURES

15:50 Autoantibodies to golgi apparatus antigens
E. K. L. Chan (La Jolla, USA)

16:25 The molecular composition and possible function of coiled bodies
A. Lamond (Dundee, UK)

SHORT ORAL COMMUNICATIONS

17:00 Description of a novel autoantigen with cross-homology to the autoantigen La/SS-B
J. Laubinger, M. Schmitz, M. Bachmann (Mainz/Dresden, Germany)

17:10 - 17:30 Coffee break

17:30 The hnRNP-D/AUF proteins. A novel group of autoantigens in rheumatology
K. Skriner, W. Hueber, E. Süleymanoglu, W. Sandtner, J. S. Smolen, G. Steiner (Vienna, Austria)

17:40 Characterization of an anti-RNA recombinant autoantibody fragment (scFv) isolated from a phage display library and detailed analysis of its binding site on U1 snRNA
S. W. M. Teunissen, G. J. M. Pruijn, M. H. W. Stassen, W. J. van Venrooij, R. M. A. Hoet (Nijmegen/Maastricht, The Netherlands)

17:50 Identification of a new antigenic peptide in rheumatoid arthritis by using the electrofusion and phage-display-technique
P. von Landenberg, R. Rzepka, I. Melchers (Regensburg/Freiburg, Germany)

WEDNESDAY, 21st OCTOBER 1998

- 18:00 Molecular analysis of anti-hnRNP-A2/RA33 autoantibodies by phage display technology using a patient derived V gene library
M. Miholits, K. Skriner, R. Hodits, R. Hoet, G. Steiner (Vienna, Austria; Nijmegen, The Netherlands)
- 18:10 Alteration of expression of the nuclear autoantigen La/SS-B in dependence on physiological and pathophysiological conditions: Evidence for transcriptional and translational control
D. Groelz, A. Pautz, M. Bachmann (Mainz, Germany)
- 18:20 Lupus prone mice by injection of the C terminal SmD1 peptide aa 83-119
G. Riemekasten, A. Kawald, R. Klein, J. Marell, G. Trebeljahr, G. R. Burmester, F. Hiepe (Berlin, Germany)
-
- 20:00 Get-Together Treff Hotel
-

- A1** Oral tolerance to low dose β 2GPI: A novel treatment of experimental antiphospholipid syndrome
M. Blank, J. George, V. Barak, A. Tincani, T. Koike, Y. Shoenfeld (Tel Hashomer/Jerusalem, Israel; Sapporo, Japan)
- A2** Isolation and characterization of two human monoclonal antiphospholipid antibodies
C. Scheckenhofner, P. von Landenberg, B. Lang, K. J. Lackner, G. Schmitz (Regensburg, Germany)
- A3** Antiendothelial cell antibodies induce tissue factor in endothelial cells
A. Kurnberg, Y. Renaudinau, M. Blank, P. Youinou, Y. Shoenfeld (Tel Hashomer, Israel; Brest, France)
- A4** Detection on immunoblot and by flow cytometry of two plasma membrane molecular targets recognized by anti-liver/kidney microsome (LKM1) antibodies (ab) type 1
E. Ballot, A. Desbos, J. C. Monier (Lyon, France)
- A5** Reactivity of anti-liver/kidney microsome type 1 (LKM1) autoantibodies (ab) in autoimmune hepatitis (AIH) type 2 and in hepatitis C virus (HCV) infection
E. Ballot, R. L. Humbel, J. C. Monier (Lyon, France; Luxembourg)
- A6** Role of autoantibodies in Q fever. Relationship with chronic disease
M. T. Camacho, B. Bustillo, M. J. Ramos, A. Téllez, I. Outschoorn, M. Gonzalez, J. Sequi, J. Gonzales, J. M. Vazquez, A. I. Marina (Madrid, Spain)
- A7** Metal-induced autoimmunity
I. Frank I., W. Meier, W. P. Bieger (Munich, Germany)
- A8** Evidence for a La-dependent nuclear import of Ro52 autoantigen
M. Bachmann, C. Schoerner, A. Schwantes., M. Schmitz (Mainz/Dresden, Germany)
- A9** Different epitope recognition after immunization of rabbits with recombinant SmD1-protein and a C-terminal SmD1-peptide
J. Marell, R. Klein, G. Riemekasten, G. Trebeljahr, J. Schneider-Mergener, G.-R. Burmester, F. Hiepe (Berlin, Germany)

POSTERS A1 - A13

- A10 Autoantibodies to transcriptional regulation proteins DEK and ALY in a patient with systemic lupus erythematosus
I. Wichmann, J. R. Garcia-Lozano, N. Respaldiza, M. F. Gonzalez-Escribano, A. Nuñez-Roldan (Sevilla, Spain)
- A11 Association of antibodies to centromere proteins A/B and F in a patient with CREST syndrome
M. F. Taillefer, C. Rose, A. Decoster, R. L. Humbel (Lille, France; Luxembourg)
- A12 Identification of anti-MSA2 (midbody) antibodies
J. Tajbakhsh, D. Schroeter, R. L. Humbel, N. Paweletz (Heidelberg, Germany; Luxembourg)
- A13 Autoantibodies against an unknown protein encoded close to the gene locus for Huntington's disease
M. Amin, J. Karbe, M. Kamprad, T. Mothes (Leipzig, Germany)

08:30 - 10:00 **Autoantibodies in connective tissue diseases**

Chair: R. L. Humbel (Luxembourg)
F. Hiepe (Berlin, Germany)

MAIN LECTURE

08:30 **Anticytoplasmic antibodies detected by ANA screening on HEp-2 cells: Characterization and clinical relevance**
R. L. Humbel (Luxembourg)

SHORT ORAL COMMUNICATIONS

09:05 **Detection of anti-PL-12 autoantibodies by ELISA using a recombinant antigen. Study of the immunoreactive region**
J. R. García-Lozano, M. F. González-Escribano, R. Rodríguez, J. L. Rodríguez-Sánchez, I. N. Targoff, I. Wichmann, A. Nuñez-Roldán (Sevilla, Spain)

09:15 **IgA and IgM anti-dsDNA antibodies in SLE: associations with clinical and laboratory parameters**
T. Witte, K. Hartung, C. Sachse, T. Matthias, M. Fricke, H. Deicher, J. R. Kalden, H. J. Lakomek, H. H. Peter, R. E. Schmidt and the members of the SLE study group (Hannover, Germany)

09:25 **Membrane associated DNA is a specific target recognized by serum IgG in systemic lupus erythematosus**
G. Servais, M. Guillaume, J. Duchateau (Brussels, Belgium)

09:35 **Autoantibodies to SSA/Ro-52. Are they real ?**
L. Meheus, S. deKeyser, S. Bastin, R. L. Humbel (Zwynaarde, Belgium; Luxembourg)

09:45 - 10:00 Coffee break

10:00 - 10:50 **Poster Session: Posters B1-B9**

THURSDAY, 22nd OCTOBER 1998

10:50 - 12.55 **Autoantibodies in liver and gastrointestinal diseases**

Chair: R. L. Humbel (Luxembourg)
 J. C. Homberg (Paris, France)

MAIN LECTURE

10:50 **Autoantibodies in liver diseases**
 J. C. Homberg (Paris, France)

SHORT ORAL COMMUNICATIONS

11:25 **Determination of autoantibodies against sp100, gp210 and lamin B receptor (LBR) in different groups of liver and autoimmune diseases using recombinant antigens**
 M. Klafki, K. Conrad, R. Klein, C. Hentschel, W. Schößler, K.-H. Frank (Dresden/Berlin, Germany)

11:35 **Nuclear associated neutrophil autoantibodies and autoantibodies against HMG proteins are both observed in some patients with ulcerative colitis**
 N. Fabien, A. Desbos, C. Ohrt, R. L. Humbel, J. C. Monier (Pierre-Benite, Luxembourg)

11:45 **Autoantibodies to tissue transglutaminase in coeliac disease and dermatitis herpetiformis**
 W. Dieterich, E. Laag, A. Ferguson, H. Gillet, U. Volta, L. Bruckner-Tudermann, S. Karpati, T. Reunala, E. O. Riecken, D. Schuppan (Erlangen-Nürnberg, Germany)

12:00 - 13:00 **Poster Session: Posters B20 – B28**
 Coeliac disease and tissue transglutaminase antibodies

13:00 - 14:00 Lunch break

14:00 - 18:00 **Autoantibodies in bullous skin diseases**

Chair: M. Meurer (Dresden, Germany)
D. Zillikens (Würzburg, Germany)

14:00 Clinical spectrum of autoimmune bullous skin diseases
M. Meurer (Dresden, Germany)

14:25 Molecular epidemiology of bullous pemphigoid
B. Rzany (Mannheim, Germany)

14:50 Patterns of tissue-bound antiepidermal autoantibodies in bullous skin diseases
L. Büchner (Dresden, Germany)

15:15 Autoantigens and autoantibodies in subepidermal blistering diseases
D. Zillikens (Würzburg, Germany)

15:40 - 16:00 Coffee break

16:00 Molecular characterization of autoantibodies in pemphigus
M. Hertl (Aachen, Germany)

16:25 Serological differentiation of pemphigus vulgaris and foliaceus by recombinant full-length human desmoglein 1 and desmoglein 3 derived from SF21 insect cells
A. Kromminga, C. Hagel, M. Sticherling, R. Arndt (Hamburg/Kiel, Germany)

16:35 Immunogenetic control of autoantibodies formation in bullous diseases of the skin
G. Messer (München, Germany)

17:00 Autoantibodies against tissue transglutaminase (tTG-Ab) in patients with dermatitis herpetiformis
K. Conrad, H. Schmechta, L. Büchner, M. Meurer (Dresden, Germany)

19:00 Surprise Party at »Pfund's Molkerei«, Bautzner Str. 79, 01089 Dresden

POSTERS B1 - B34

- B1** Detection of autoantibodies directed against ribosomal P proteins using the immunoblotting technique
N. Fabien, A. Moreira, J. P. Reboud, A. Desbos, H. Perrier, A. Venot, P. Bargis, C. Vard, J. Bienvenu, J. C. Monier (Multicenter Study Group for Autoimmune Diseases, GEAI, France/Luxembourg)
- B2** Ribosomal-P and non-P autoantibodies in systemic lupus erythematosus
C. Johanet, C. André, A. Baquey, J. Sibia, F. Oksman, M. San Marco, M. F. Taillefer, R. L. Humbel (Multicenter study group for autoimmune diseases, GEAI, France/Luxembourg)
- B3** Markers of systemic autoimmune diseases in uranium miners
K. Conrad, J. Mehlhorn, K.-H. Frank (Dresden/Niederdorf, Germany)
- B4** Have the anti-NOR 90/ hUBF antibodies a clinical significance? A study of 12 patients
I. de Lacroix-Szmania, J. P. Farcet, B. Godeau, D. Hernandez-Verdun, C. André (Créteil/Paris, France)
- B5** Coincidence of anti-Topoisomerase I and anti-centromere antibodies in patients with systemic sclerosis
T. Dick, R. Mierau, P. Bartz-Bazzanella, E. M. Weiner, M. Alavi, M. Stijanova-Scholz, J. Kindler, E. Genli (Aachen/Duisburg/Würselen, Germany)
- B6** Identification of the 70 kD subunit of human replication protein A (RPA) as a target for autoantibodies in rheumatic autoimmune diseases
D. Jordan, R. Klein, G. Trebeljahr, A. Ladhoff, F. Hiepe (Berlin, Germany)
- B7** Antinuclear antibodies to dsDNA, Sm, RNP, SS-A/Ro and SS-B/La in patients with SLE: Comparison of different detection methods and association with clinical symptoms
D. Marx, M. Zuber (Homburg, Germany)
- B8** Comparison between INNO-LIA ANA and IIF patterns for the detection of autoantibodies associated with connective tissue disorders
L. Meheus, S. Dekeyser, R. L. Humbel (Gent, Belgium; Luxembourg)

- B9** Analytical and clinical performance of the COBAS® Core Anti-dsDNA EIA Quant, a new quantitative solid phase assay
V. Tacheron, P. C. Frei, B. Fabian, I. S. Keramat, P. M. Bayer, N. Fabien, G. Monneret, J. Bienvenu, F. Spertini (Lausanne, Switzerland; Vienna, Austria; Lyon, France)
- B10** Analytical and clinical performance of the COBAS® Core Anti-RNP EIA Quant, a new quantitative solid-phase assay
V. Tacheron, P. C. Frei, B. Fabian, I. S. Keramat, P. M. Bayer, N. Fabien, G. Monneret, J. Bienvenu, F. Spertini (Lausanne, Switzerland; Vienna, Austria; Lyon, France)
- B11** Analytical and clinical performance of the COBAS® Core Anti-Sm EIA Quant, a new quantitative solid phase assay
V. Tacheron, P. C. Frei, B. Fabian, I. S. Keramat, P. M. Bayer, N. Fabien, G. Monneret, J. Bienvenu, F. Spertini (Lausanne, Switzerland; Vienna, Austria; Lyon, France)
- B12** Comparison of detection of antinuclear antibodies with immunofluorescence to a new enzyme immunoassay COBAS® Core HEp2 ANA EIA
B. Gilburd, Y. Shoenfeld (Tel Hashomer, Israel)
- B13** COBAS® Core Anti-Sm EIA Quant and COBAS® Core Anti-RNP EIA Quant: Performance characteristics of the first fully automated assays for the detection of autoantibodies against Sm and RNP
B. Verdon, G. Schneider, I. Herde, J. Burckhardt, W. Zolg (Basel, Switzerland)
- B14** Problems in the determination of ANCA-specificity by commercial ELISA-kits
P. Schmit, S. Bastin, M. Goeury, V. Pierrard, G. Gilson, R. L. Humbel (Luxembourg)
- B15** IgM anti-myeloperoxidase ANCA : biological and clinical study
J. Goetz, R. L. Humbel, M. Fischbach, C. Duhem, J. Sibilia, I. Jahn, G. Hauptmann (Strasbourg, France; Luxembourg)

POSTERS B1 - B34

- B16 Protein engineering and recombinant overexpression of proteinase 3 (PR3) suitable for *in vitro* diagnostic assays**
T. Simon, J. Schmitt, H. Berthold, E. Meier, B. Birk, B. Liedvogel, H. Haubruck (Freiburg, Germany)
- B17 ANCA in cystic fibrosis**
K. Malberg, C. Gottschalk, V. Sollich, R. Schuster, W. Thal (Magdeburg, Germany)
- B18 Anti-elastase antibodies in patients with pulmonary hemorrhage**
J. P. Arnaudo, J. L. Alexandre, F. Couval, A. Scotton, P. Kaminski, P. Schmit, R. L. Humbel (Luxembourg; Nancy/Épinal, France)
- B19 Use of heterologous secretion leader sequences for expression of immunoreactive goodpasture antigen in the baculovirus/insect cell system**
P. Höpfl, L. Mauch, R. L. Humbel, B. Liedvogel, H. Haubruck (Freiburg, Germany; Luxembourg)
- B20 Evaluation of newly characterized serological markers of coeliac disease**
D. Sánchez, L. Tucková, H. Tlaskalová-Hogenová, J. R. F. Walters, A. Whelan (Prague, Czech Republic)
- B21 Diagnostic relevance of antibodies against transglutaminase, endomysium, reticulin and gliadin in coeliac disease**
M. Ossendorf, W. Schlumberger, T. Schneider, T. Orth, C. Dährich, W. Stöcker, W. Prellwitz (Lübeck, Germany)
- B22 Mapping of common epitopes on gliadin, enterocytes and calreticulin recognized by antigliadin antibodies of patients with coeliac disease**
S. Krupicková, L. Tucková, Z. Flegelová, J. R. F. Walters, A. Whelan, H. Tlaskalová-Hogenová (Prague, Czech Republic)
- B23 A novel diagnostic test for the detection of coeliac disease**
V. Kumar, J. Schwartz, M. Rajadhyaksha (Buffalo, USA)

- B24** Antibodies to tissue transglutaminase in coeliac disease
 R. L. Humbel, C. André, A. Escande, C. Johanet, J. C. Monier, A. Chevailler, F. Oksman, M. San Marco, J. Cohen, M. F. Taillefer, J. Goetz, J. Sibia (Multicenter Study Group for Autoimmune Diseases, GEAL, France/Luxembourg)
- B25** Tissue transglutaminase autoantibodies and their value as a diagnostic marker in coeliac disease
 M. Amin, T. Eckhardt, U. Sack, H. Weichert, S. Kapitza, B. Fleckenstein, T. Mothes (Leipzig/Böhlitz-Ehrenberg/Tübingen, Germany)
- B26** Correlation of IgA antibodies to tissue transglutaminase (tTG-Ab) with IgA antibodies against endomysium
 K. Conrad, H. Schmechta, U. Kießling, L. Schulze, C. Steller, B. Naumann, J. Henker (Dresden, Germany)
- B27** The prevalence of undiagnosed gluten sensitive enteropathy (GSE) in the area of Dresden detected by analysis of GSE typical autoantibodies
 S. Möller, J. Henker, K. Conrad, B. Hederer, T. Hirsch, W. Leupold (Dresden, Germany)
- B28** Association of gluten sensitive enteropathy (GSE) with type I diabetes detected by analysis of GSE typical autoantibodies
 S. Münstermann, J. Henker, K. Conrad (Dresden, Germany)
- B29** Anti-soluble liver antigen autoantibody - a specific marker in autoimmune hepatitis (AIH) type 1
 E. Ballot, J. C. Homberg, C. Johanet (Paris, France)
- B30** Interferon therapy in LKM1 positive patients with chronic hepatitis C: Follow-up by a quantitative radioligand assay for CYP2D6 antibody detection
 J.-C. Duclos-Vallée, M. Nishioka, N. Hosomi, K. Arima, A. Leclercq, J.-F. Bach, A. M. Yamamoto (Paris, France; Kagawa, Japan)
- B31** Presence of multiple liver-specific autoantibodies in a case of giant cell hepatitis
 J. P. Tomasi, R. L. Humbel, P. Schmit, E. M. Sokal, J. P. Buts (Brussels, Belgium; Luxembourg)

POSTERS B1 - B34

- B32 Autoantibodies in chronic hepatitis C**
F. Dinu, F. Mascart, J. T. Brouwer, M. Adler, N. Bourgeois (Luxembourg)
- B33 A new type of antithyroid antibodies in patients with chronic hepatitis C infection before interferon therapy**
K. Peoc'h, L. Dubel, O. Chazouillères, T. Ocwieja, F. Duron, R. Poupon, C. Johanet (Paris, France)
- B34 A new dot test for anti-intrinsic factor autoantibodies**
A. Vigneron, J. Bouvier, S. Bastin, R. L. Humbel (Mons, France; Luxembourg)

09:00 - 12:45 **Autoantibodies in neurological and endocrinological diseases**

Chair: A. Vincent (Oxford, UK)
F. Heidenreich (Hannover, Germany)

MAIN LECTURES

- 09:00 Autoantibodies associated with peripheral neuropathies
F. Heidenreich (Hannover, Germany)
- 09:40 Clinical relevance of autoantibodies to ion channel proteins
A. Vincent and J. Newsom-Davis (Oxford, UK)
-

10:20 - 10:40 Coffee break

SHORT ORAL COMMUNICATIONS

- 10:40 Problems in the determination of antineuronal antibodies: From neuro-lupus to paraneoplastic neurological diseases
U. Wurster (Hannover, Germany)
- 10:50 A new method for diagnosing epilepsy by detecting autoantibodies to GluR1 in the blood serum
S. Dambinova (St. Petersburg, Russia)
- 11:00 Autoantibodies to mu-delta opiate receptors in the diagnosis of drug abuse
G. A. Izykenova (St. Petersburg, Russia)
- 11:10 Is thyroid associated ophthalmopathy (TAO) an autoimmune myositis or adipositis ?
A. Kromminga, F. Schuppert, P. Matucha, K. Hennig, R. Arndt, I. Sterzl (Hamburg/Hannover, Germany; Prague, Czech Republic)
- 11:20 Comparative evaluation of different assays for the GAD65 autoantibody determination in IDDM
R. L. Humbel, A. C. Guillaume, P. Schmit, G. Gilson, C. de Beaufort, G. Michel (Luxembourg)

FRIDAY, 23rd OCTOBER 1998

11:30 Cyp450c21 (S21 hydroxylase): optimized expression of a recombinant human autoantigen and its application in an ELISA
H. Haubruck, H. Gut, B. Leistler, R. L. Humbel, B. Liedvogel (Freiburg, Germany; Luxembourg)

11:45 - 12:45 Poster Session: Posters C1 - C10

12:45 - 14:00 Lunch break

14:00 - 17:00 **Autoantibodies and tumors**

Chair: P. Fishman (Petach-Tikva, Israel)
M. Montenarh (Homburg, Germany)

MAIN LECTURES

14:00 **Cancer and autoimmunity**
P. Fishman (Petach-Tikva, Israel)

14:35 **Diagnostic relevance of p53 autoantibodies**
M. Montenarh (Homburg, Germany)

15:10 **Autoantibodies to centromere protein F**
C. A. Casiano (Loma Linda, USA)

15:45 - 16:05 Coffee break

SHORT ORAL COMMUNICATIONS

16:05 **Antineural and antinuclear autoantibodies are of prognostic relevance in non-small cell lung cancer**
F. Blaes, M. Klotz, H. Huwer, U. Straub, G. Kalweit, K. Schimrigk, H. J. Schäfers (Homburg, Germany)

- 16:15 **Serum p53 autoantibody as tumor marker in head and neck cancer?**
S. Gottschlich, J. D. Maaß, M. Hoffmann, A. Hoffmann-Fazel, J. A. Werner, H. Rudert (Kiel, Germany)
- 16:25 **Immunological characterization of a new paraneoplastic neuropathy-associated antineural autoantibody with cytotoxicity to myenteric plexus cultures**
M. Klotz, F. Blaes, D. Mergner, M. Strittmatter, K. Schimrigk, K. H. Schäfer (Homburg, Germany)
- 16:35 **Autoantibodies - predictive parameters of tumor development ?**
J. Rohayem, K. Conrad, C. Steller, J. Mehlhorn (Dresden/Niederdorf, Germany)
- 16:45 **Non-organ specific autoantibodies in tumor patients**
G. Gosrau, U. Kießling, L. Schulze, K. Conrad (Dresden, Germany)

17:00 - 18:00 **Poster Session: Posters C11 - C15**

POSTERS C1-C15

- C1 Serum with autoantibodies to nervous system antigens blocks neuromuscular activity
A. de Feo, H. A. N. El-Fawal (Dobbs-Ferry, USA)
- C2 Anticholinesterase and neuromuscular activity of autoantibodies resulting from organophosphate exposures
H. A. N. El-Fawal, A. de Feo (Dobbs-Ferry, USA)
- C3 Autoantibodies directed against Peripheral Myelin Protein 22 (PMP22) in patients with neuropathies
C. Gaul, H. Grehl, O. Park, B. Rautenstrauss, B. Neundörfer (Erlangen, Germany)
- C4 Cognitive impairments are associated with elevated levels of anti-phospholipid antibodies in rats
L. Ziporen, A. D. Korezn, N. Kariv, Y. Shoenfeld (Tel Aviv, Israel)
- C5 Neurological dysfunction associated with experimental anti-phospholipid syndrome: Histopathological findings
L. Ziporen, A. D. Korezn, A. Korczyn, I. Goldberg, S. Chareon-Polak, A. Afek, Y. Shoenfeld (Tel Aviv, Israel)
- C6 Detection of anti-ganglioside antibodies by immunodot technique. A laboratory and clinical study
P. Schmit, V. Pierrard, M. Goeury, G. Gilson, R. L. Humbel (Luxembourg)
- C7 Evaluation of four different methods for the detection of anti-MAG autoantibodies
P. Schmit, R. L. Humbel, G. Gilson (Luxembourg)
- C8 Determination of anti-IA-2 antibodies in insulin dependent diabetes mellitus
R. L. Humbel, L. Mauch, C. de Beaufort, P. Schmit, G. Gilson, B. Liedvogel (Luxembourg; Freiburg, Germany)
- C9 Karlsburg IDDM risk study in schoolchildren. Combined test for antibodies to GAD and IA2 is recommended for primary screening in the general population
M. Ziegler, M. Strebellow, R. Wassmuth, M. Schlosser, B. Ziegler (Karlsburg/Erlangen, Germany)

- C10 **Anti-thyroid peroxidase autoantibodies and autoimmune thyroiditis in French lupus families**
C. Johanet, M. Michel, C. Francès, S. Arfi, E. Tournier-Lasserre, J. C. Piette (Paris, France)
- C11 **p53 autoantibodies in autoimmune diseases**
H. M. Kuhn, A. Kromminga, H. T. Flammann, M. Frey, P. Layer, R. Arndt (Hamburg/Heidelberg, Germany)
- C12 **p53 Autoantibodies in patients with urological tumors**
C. Lang, G. Unteregger, M. Montenarh, T. Zwergel (Homburg, Germany)
- C13 **Postoperative p53 autoantibodies in patients with gastric or colon carcinomas seronegative at the time of tumor resection**
H. T. Flammann, H.-M. Kuhn, G. Weinland, C. Fibbe, R. Arndt, H. Frenzel, P. Layer (Hamburg, Heidelberg, Germany)
- C14 **The p53 autoantibody - A novel prognostic marker in head and neck cancer ?**
S. Gottschlich, T. Görögh, B. J. Folz, J. D. Maaß, M. Hoffmann, B. M. Lippert, J. A. Werner, H. Rudert (Kiel, Germany)
- C15 **Comparison of the diagnostic accuracy of three different anti-p53 ELISAs in the diagnosis of cancer**
J. Rohayem, K. Conrad, T. Zimmermann (Dresden, Germany)
- C16 **Anti-cardiolipin, anti-endothelial-cell and anti-malonyldialdehyde-LDL antibodies in uremic patients undergoing hemodialysis: Relationship with vascular access thrombosis and thromboembolic events**
J. George, A. Aron, Y. Levy, A. Ben-David, M. Hohnik, Y. Renaudineau, Zonach-Nachach, P. Youinou, D. Harats, Y. Shoenfeld (Tel Hashomer, Israel; Brest, France)
- C17 **Autoantibodies as prognostic indicators of graft outcome in kidney transplantation**
C. Süsal and G. Opelz for the Collaborative Transplant Study (Heidelberg, Germany)
- C18 **Occurrence of antistriational antibodies in patients with Trichinella spiralis infection**
A. Macura-Biegun, A. Pituch-Noworolska, M. Rewicka, B. Mrozewicz, J. Noworolski (Krakow, Poland)

SATELLITEN-SYMPOSIUM*

Nachweis und klinische Relevanz von Autoantikörpern

Samstag, 24. Oktober 1998

Wiss. Leitung: R. L. HUMBEL
K. CONRAD
M. MEURER

- 09:00 K. Conrad (Dresden)
Highlights des 4. Dresdner Autoantikörpersymposiums
- 09:45 R. L. Humbel (Luxembourg)
Im ANA-Screening an HEp-2-Zellen nachweisbare
antizytoplasmatische Antikörper: Charakterisierung und klinische
Relevanz
- 10:35 M. Meurer (Dresden)
Autoantikörper bei bullösen Dermatosen

11:20-11:45 Kaffeepause, Imbiß

- 11:45 J. Henker, K. Conrad, A. Möller (Dresden)
Diagnostische Wertigkeit zöliakiespezifischer Antikörper
- 12:30 R. L. Humbel (Luxembourg)
Autoantikörper beim Typ I-Diabetes und bei anderen
Endokrinopathien
- 13:15 F. Heidenreich (Hannover)
Autoantikörper bei peripheren Neuropathien und
paraneoplastischen neurologischen Syndromen
- 14:00 M. Montenarh (Homburg)
Die Bedeutung von p53-Autoantikörpern für die Diagnostik
humaner Tumorerkrankungen

14:00 – 16:00 Round-Table-Diskussion

* mit Unterstützung der DPC-Akademie

Prof. Donato Alarcón-Segovia, M.D.
Instituto Nacional de la Nutrición Salvador Zubirán
Vasco de Quiroga 15
14000 Mexico DF
MEXICO

Lutz Büchner, M.D.
Department of Dermatology
Medical Faculty »Carl Gustav Carus«
Technical University Dresden
Fetscherstrasse 74
D-01307 Dresden
GERMANY

Prof. Carlos A. Casiano, Ph.D.
Department of Microbiology & Molecular Genetics
School of Medicine
Loma Linda University
Loma Linda, CA 92350
USA

Prof. Edward K. L. Chan, Ph.D.
The Scripps Research Institute
10550 N. Torrey Pines Road
La Jolla CA, 92037
USA

Prof. Hwee-Ming Cheng, M.D.
Department of Physiology
University of Malaysia
50603 Kuala Lumpur
MALAYSIA

Karsten Conrad, M.D.
Institute of Immunology
Medical Faculty »Carl Gustav Carus«
Technical University Dresden
Karl-Marx-Str. 3
D-01101 Dresden
GERMANY

MAIN SPEAKERS AND CHAIRMEN

Prof. Pnina Fishmann, Ph.D.

Laboratory of Clinical and Tumor Immunology
The Felsenstein Medical Research Center
Rabin Medical Center
Sackler Faculty of Medicine
IL- 49100 Petach-Tikva
ISRAEL

PD Fedor Heidenreich, M.D.

Medical University Hannover
Department of Neurology
Carl-Neuberg-Str. 1
D-30625 Hannover
Germany

Prof. Jobst Henker, M.D.

Department of Pediatrics
Medical Faculty »Carl Gustav Carus«
Technical University Dresden
Fetscherstrasse 74
D-01307 Dresden
GERMANY

PD Michael Hertl, M.D.

Department of Dermatology
RWTH Aachen
Pauwelstrasse 30
D-52057 Aachen
GERMANY

Prof. Falk Hiepe, M.D.

Department of Medicine, Rheumatology and Clinical Immunology
Campus Charité
Humboldt University Berlin
Schumannstrasse 20/21
D-10117 Berlin
GERMANY

Prof. Jean-Claude Homberg, M.D., Ph.D.

Laboratoire Central d'Immunologie et d'Hématologie
Hôpital Saint-Antoine
184 rue du Faubourg Saint-Antoine
F-75571 Paris cedex 12
FRANCE

Prof. René Louis Humbel, M.D.

Centre Hospitalier de Luxembourg
Laboratoire de Biochimie-Immunopathologie
4, rue Barble
L-1210 Luxembourg
LUXEMBOURG

Prof. Angus Lamond, M.D.

Department of Biochemistry
Wellcome Trust Building
University of Dundee
Dundee DD1 4HN
SCOTLAND, UK

Gerald Messer, M.D.

Department of Dermatology
Ludwig Maximilians University
Frauenlobstrasse 9-11
D-80337 München
GERMANY

Prof. Michael Meurer, M.D.

Department of Dermatology
Medical Faculty »Carl Gustav Carus«
Technical University Dresden
Fetscherstrasse 74
D-01307 Dresden
GERMANY

Prof. Mathias Montenarh, Ph.D.

Department of Biochemistry and Molecular Biology
University of the Saarland
Building 44
D-66421 Homburg
GERMANY

Jaques Rohayem

Institute of Immunology
Medical Faculty »Carl Gustav Carus«
Technical University Dresden
Karl-Marx-Str. 3
D-01101 Dresden
GERMANY

MAIN SPEAKERS AND CHAIRMEN

Alejandro Ruiz-Argüelles, M.D.

Department of Immunology
Laboratorios Clínicos de Puebla
Díaz Ordaz 808
Puebla PUE 72530
MEXICO

B. Rzany, M.D.

Department of Dermatology
Faculty of Clinical Medicine
Theodor-Kutzer-Ufer 1
D-68135 Mannheim
GERMANY

Prof. Yehuda Shoenfeld, M.D.

Sheba Medical Center
Department of Medicine B
IL-52621 Tel Hashomer
ISRAEL

Prof. Eng M. Tan, M.D.

Head, Keck Autoimmune Disease Center
The Scripps Research Institute
10550 N. Torrey Pines Road
La Jolla, CA 92037
USA

Angela Vincent, M.B., M.Sc., M.R.CPath.

Institute of Molecular Medicine
John Radcliffe Hospital
Neurosciences Group
Oxford OX3 9DU
England
UK

PD Detlef Zillikens, M.D.

Department of Dermatology
University of Würzburg
Josef-Schneider-Strasse 2
D-97080 Würzburg
GERMANY

The Binding Site GmbH

Technologiepark Heidelberg, Im Neuenheimer Feld 517, D-69120 Heidelberg

DPC Biermann GmbH

Hohe Strasse 1-8, D-61231 Bad Nauheim

Bionalytik GmbH

Heikendorfer Weg 45, D-24149 Kiel

Biotest Pharma GmbH

Landsteinerstrasse 5, D-63303 Dreieich

Coulter-Immuntotech Diagnostics

Europark Fichtenhain B. 13, D-47807 Krefeld

DLD Diagnostika GmbH

Adlerhorst 15, D-22459 Hamburg

Euroimmun GmbH

Am Sonnenberg 9, D-23627 Groß Grönau

Gull Laboratories GmbH

GB Autoimmune Diagnostics, Daimlerstr. 22, D-61352 Bad Homburg

HISS Diagnostics GmbH

Colombistr. 27, D-79098 Freiburg

Hoffmann-La Roche AG

Diagnostics Division, Bau 223/243, CH-4070 Basel

IMTEC Immundiagnostika GmbH

Robert-Rössle-Strasse 10, D-13125 Berlin

LD Labor Diagnostika GmbH

Industriestrasse 12, D-46359 Heiden

Mast Diagnostica

Laboratoriums-Präparate GmbH, Feldstrasse 20, D-23854 Reinfeld

Medipan Diagnostika GmbH

Rotberger Strasse 18, D-15831 Selchow

ORGenTec Diagnostika GmbH

GB Export & Marketing, Kupferbergterrasse 17 - 19, D-55116 Mainz

Pharmacia & Upjohn Diagnostics GmbH & Co. KG

Munzingerstrasse 7, D-79111 Freiburg

Sanofi Diagnostics Pasteur GmbH

GB Autoimmundiagnostik, Sasbacher Strasse 5, D-79111 Freiburg

Seramun Diagnostica GmbH

Gutshof 4, 15754 Dolgenbrodt

GENERAL INFORMATION

VENUE

Treff Hotel Dresden
Wilhelm-Franke-Str. 90
01219 Dresden

LOCAL ORGANIZING COMMITTEE

K. Conrad
J. Rohayem
Technische Universität Dresden
Universitätsklinikum »Carl Gustav Carus«
Institut für Immunologie
Postfach 800115
D-01101 Dresden

Telephone: +49-351-8832-767
Fax: +49-351-8832-778

SCIENTIFIC PROGRAMME COMMITTEE

K. Conrad (Dresden)
R. L. Humbel (Luxembourg)
M. Meurer (Dresden)
E. M. Tan (La Jolla)
Y. Shoenfeld (Tel Hashomer)

ORGANISATION

(Registration, Reservations, Exhibition)
Porstmann Kongresse GmbH
Friedrichstraße 130 a
D-10117 Berlin
Telephone: +49-30-285 999 80
Telefax: +49-30-285 999 82
E-mail porstmann@porstmann-kongresse.de

SYMPOSIUM LANGUAGE

21st-23rd October: English, no simultaneous translation
24th October: German

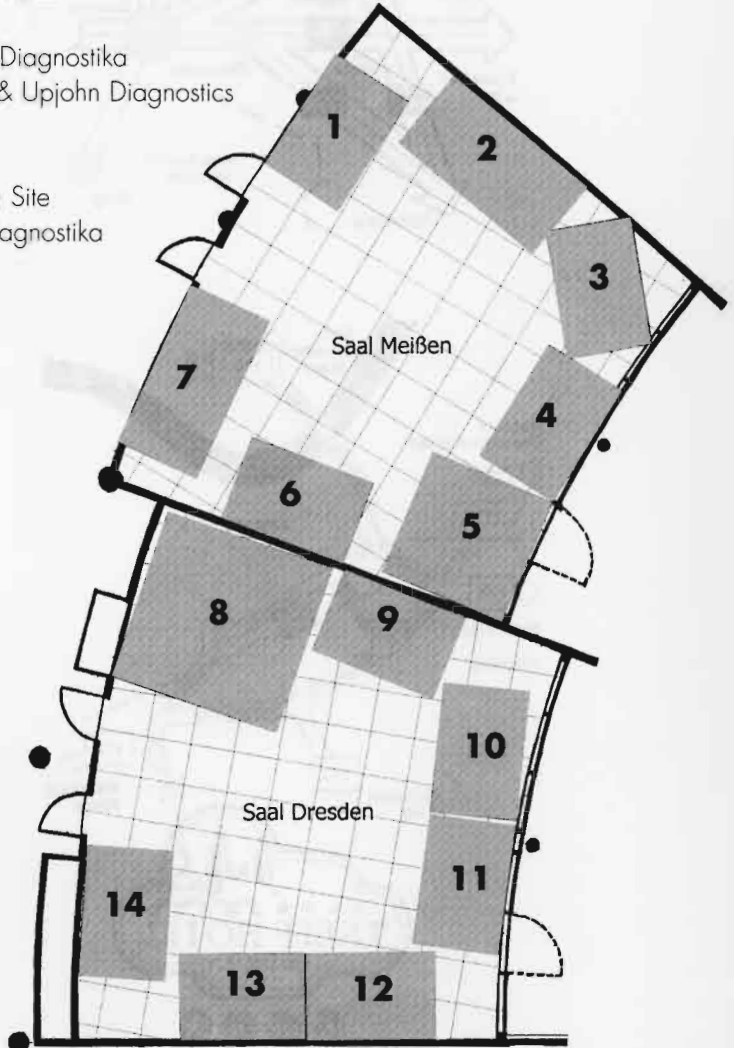
REGISTRATION FEE

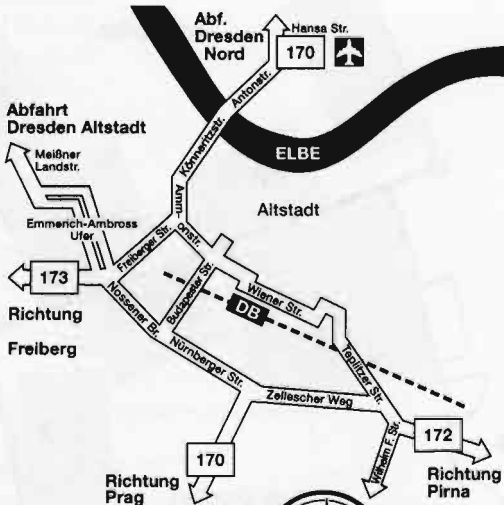
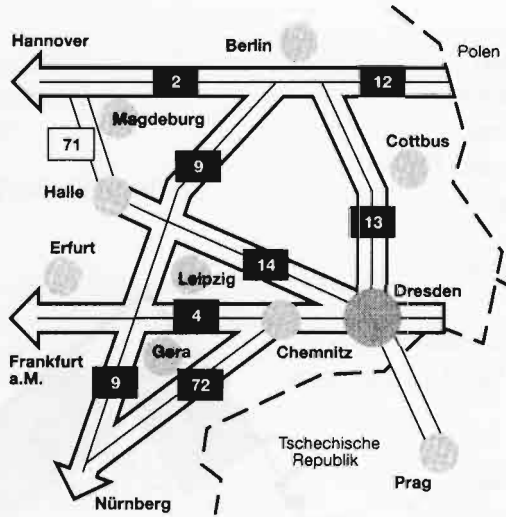
Participants	DM 350
Students*/Residents (AiP)*	DM 150
Day ticket	DM 150

**Please present student card or other proof.*

EXHIBITORS

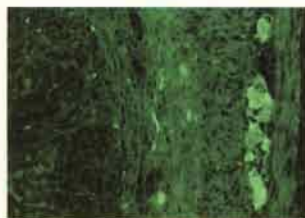
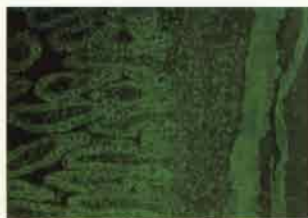
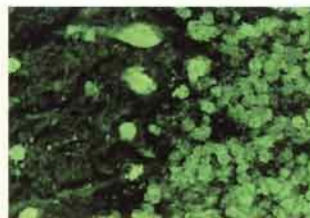
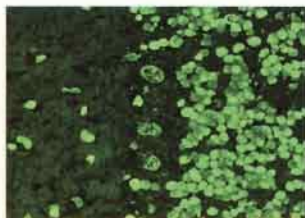
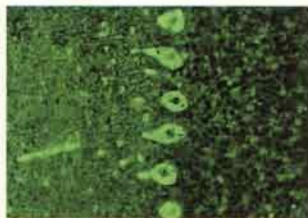
- 1 DLD Diagnostika
- 2 Hoffmann-La Roche
- 3 Gull Laboratoires
- 4 Sanofi Diagnostics Pasteur
- 5 Mast Diagnostica
- 6 Bionalytik
- 7 HISS Diagnostics
- 8 Euroimmun
- 9 ORGenTec Diagnostika
- 10 Pharmacia & Upjohn Diagnostics
- 11 Biotest
- 12 IMTEC
- 13 The Binding Site
- 14 LD Labor Diagnostika







BIOCHIP-Mosaiken für die Neurologie



Anti-Yo

Anti-Hu

Anti-Ri

Serologischer Nachweis von Autoantikörpern gegen Purkinjezell-Cytoplasma (Anti-Yo) und Neuronenkerne (Anti-Hu und Anti-Ri). Substrate: Kleinhirn und Darm, Affe.

Das Produktspektrum der Firma EUROIMMUN umfasst Reagenzien für die **AUTOIMMUNDIAGNOSTIK** und die **INFEKTION-SEROLOGIE**. **Indirekte Immunfluoreszenz:** Objektträger mit BIOCHIPS (Einzelsubstrate oder BIOCHIP-MOSAIKEN® aus 2 bis über 30 unterschiedlichen Substraten, die nach Ihren speziellen Wünschen zusammengestellt werden können): Schilddrüse, Nebenschilddrüse, Pankreas, Nebenniere, Ovar, Plazenta, Testis, Spermatozoen, Hypophyse, Hypothalamus, Großhirn, Kleinhirn, Substantia nigra, periphere Nerven, Rückenmark, Auge, Granulocysten, Lymphocysten, Monocysten, Thrombocysten, Niere, Lunge, Leber, Mundschleimhaut, Magencorpus, Magenantrum, Jejunum, Colon, Nabelschnur, Mamma, Tränenrüse, Parotis, Prostata, Vesicula seminalis, Skelettmuskel, Herzmuskel, Thymus, Lipocysten, Knorpelgewebe, Epidermis, Ösophagus, Zunge, Lippe, Melanocysten, HEp-2-Zellen, Ratteniere, Mäuseniere, Rattenmagen, Mäusemagen, Rattenleber, Mäuseleber, Rattenösophagus, Crithidia luciliae und andere. **Adenoviren, Bordetella parapertussis*, Bordetella pertussis*, Borrelia burgdorferi (Stämme D, CH, USA), Candida albicans, glabrata, krusei, tropicalis, parapsilosis, Campylobacter coli, Campylobacter jejuni, Chlamydia pneumoniae, Chlamydia trachomatis*, CMV*, Coxsackie-Viren (A7, A9, A16, A24, B1 bis B6), EBV-CA, EBNA, EBV-EA, Echinokokkus granulosis, Echinokokkus multilocularis, Haemophilus influenzae, Helicobacter pylori, HIV-1*, HIV-2*, HHV-6, HSV-1, HSV-2, Influenza A (Stämme Shangdong, Singapore und Beijing), Influenza B (Stamm Panama), Klebsiella pneumoniae, Legionella bozemanii, Legionella dumoffii, Legionella gormanii, Legionella jordanii, Legionella longbeachae, Legionella micdadei, Legionella pneumophila 1 bis 14, Listeria monocytogenes (1/2a und 4b), Masern, Mumps, Mycoplasma pneumoniae, Parainfluenza 1 bis 4, Röteln*, RSV, Toxoplasma gondii*, Treponema pallidum*, Treponema phagedaenis, VZV, Yersinia enterocolitica* (0:3, 0:4, 0:6 und 0:9). **ELISA:** Antikörper gegen ENA (Profil, PoolPlus), SS-A, SS-B, Sm, nRNP/Sm, Scl-70, Jo-1, Cardiollipin, Phosphatidylserin, B2-Glycoprotein 1, AMA-M2, AMA-M4, AMA-M9, ribosomales P-Protein, Kollagen (Profil I bis VI, Pool), Gliadin, Maus-IgG, Schilddrüsen-Peroxidase, Thyreoglobulin, Intrinsic Factor, ANCA-Profil: PR3, BPI, MPO, Elastase, Kathepsin-G, Lysozym, Laktoferrin, glomeruläre Basalmembran GBM, Histone, dsDNS, ssDNS, RNS, Gangliosid GM₁, Adenoviren, Borrelia burgdorferi, FSME, Chlamydia trachomatis*, CMV*, Helicobacter pylori, HSV-1, HSV-2, Influenza A und B, Masern, Mumps, Parainfluenza 1 bis 3, RSV, Toxoplasma gondii*, VZV. **Westernblot:** Borrelia burgdorferi, Yersinia enterocolitica, Helicobacter pylori. **EUROBLOT®:** Antikörper gegen SS-A, SS-B, Scl-70, Sm, nRNP/Sm, Jo-1, Histone, dsDNS, ribosomales P-Protein, AMA-M2, AMA-M4, AMA-M9. **EUROPLUS®:** Ratteniere plus AMA-M2, Primatenmagen (Belegzellen) plus Intrinsic Factor, Primatendarm (Endomysium) plus Gliadin. Mit * gekennzeichnete Präparate in Deutschland nicht im Vertrieb.**