

**3RD DRESDEN SYMPOSIUM
ON AUTOANTIBODIES**

DRESDEN, 26 - 28 SEPTEMBER 1996

SCIENTIFIC PROGRAMME





Dear participants,

Welcome to Dresden and to the 3rd International Symposium on Autoantibodies.

Building on the success of the past two symposia, we have once again succeeded in engaging well-renowned colleagues and researchers in the field of autoantibodies as speakers and chairmen.

I should like to take this opportunity to thank all who have supported this symposium either financially or in an advisory capacity. I am sure that the next few days will prove to be a scientifically motivating experience, and hope that you will enjoy your visit to our wonderful city - the Florence of the Elbe!

Dr. Karsten Conrad
Scientific Organiser

WEDNESDAY, 25.9.96

17.30-19.00 Registration

THURSDAY, 26.9.96

7.30-9.00 Registration

9.00 Opening/Welcome

9.15-12.30 WORKSHOP 1, PART 1

Autoantigens, autoantibodies and their role in the pathogenesis of autoimmune diseases

*Chairpersons: E. M. Tan (La Jolla, USA),
A. Rosen (Baltimore, USA),
M. Bachmann (Mainz, Germany)*

9.15 Autoantibodies to nuclear envelope and other matrix-associated antigens in Chronic Fatigue Syndrome
E. M. Tan (La Jolla, USA)

9.50 A subset of autoantigens is specifically cleaved early during apoptosis by ICE-like proteases
A. Rosen, L. Casciola-Rosen (Baltimore, USA)

10.25-10.50 COFFEE BREAK

10.50 Characterization of the epitopes of myositis specific autoantibodies
H. Grosjean (Paris, France)

11.25 The proteasome α -type subunit C9 is a primary target of autoantibodies in sera of patients with myositis and systemic lupus erythematosus.
E. Feist, T. Dörner, U. Kuckelhorn, G. Schmidtke, B. Micheel, F. Hiepe, G. R. Burmester, P.-M. Kloetzel (Berlin, Germany)

11.35 The autoantigen La/SSB: Identification of a hot spot in an autoepitope region, a frame shift mutation in a cDNA of an autoimmune patient and an altered localization of the mutated La peptide
D. Grözl, M. Bachmann (Mainz, Germany)

11.45 Intracellular localization of La autoantigen:
An immunocytochemistry evidence
F. Lejbkowitz (Haifa, Israel)

11.55 Enhanced membrane expression of the 52 kD Ro (SS-A) and La (SS-B) antigens by human keratinocytes induced by TNF- α
T. Dörner, W. J. Mayet, U. Trefzer, R. Klein, G. R. Burmester, F. Hiepe (Berlin, Germany)

12.05 Anti-52 kDa (SS-A) autoantibodies in different autoimmune diseases preferentially recognize epitopes on the central region of the antigen.
T. Dörner, E. Feist, A. Wagenmann, T. Kato, K. Yamamoto, G. R. Burmester, F. Hiepe (Berlin, Germany)

- 12.15 Autoantibodies to the hnRNP-A2 protein (RA33) and related hnRNP proteins in rheumatic diseases
G. Steiner, K. Skriner, W. Sommergruber, V. Tremmel, D. Plows, G. Kollias, J. S. Smolen (Vienna, Austria)
- 12.25 Autoantibodies against Calpastatin: Characterization of the epitope(s)
U. Schlosser, K. J. Lackner, G. Schmitz (Regensburg, Germany)

12.30-14.00 LUNCH

Opportunity to view the posters and commercial exhibition

14.00-16.00 WORKSHOP 1, PART 2

Autoantigens, autoantibodies and their role in the pathogenesis of autoimmune diseases

*Chairpersons: K. M. Pollard (La Jolla, USA),
 W.-J. Mayet (Mainz, Germany)*

- 14.00 Role of mercury and other xenobiotics in induction of autoimmunity
K. M. Pollard (La Jolla, USA)
- 14.35 T- and B-cell activation in murine metal-induced autoimmunity
P. Hullman, B. Sander, U. Johansson (Linköping, Sweden)
- 14.45 Anticardiolipin antibodies induce neutrophil degranulation: Effect of Fc γ -receptor blockade and immunoglobuline preparations
A. Perniok, C. Specker, M. Schneider (Düsseldorf, Germany)
- 14.55 Natural and covert human IgA autoantibodies to Cardiolipin
H. M. Cheng, L. Chamley, K. K. Wong (Kuala Lumpur, Malaysia)
- 15.05 Follow up of patients with high antiphospholipid antibodies
W. J. Pichler, C. Urfer, A. Helbing (Bern, Switzerland)
- 15.15 Prevalence and specificity of autoantibodies in 257 patients presenting with acute hepatitis
U. Treichel, T. Orth, N. Tassoupoulos, W. Mayet, K.-H. Meyer zum Büschentfelde (Mainz, Germany)
- 15.25 Anti-lipocyte and other autoantibodies in a patient with generalized lipoathrophic diabetes mellitus
W. Stöcker, T. Kleiner, K. Abendroth, G. Hein, A. Knöll, G. Stein, E. Müller-Kunert, B. Splitt, W. Meyer, W. Schlumberger (Groß Grönau, Germany)
- 15.35 Characterization of a cell cycle-dependent nuclear autoantigen
M. Zuber, M. Pfreundschuh, A. Klepper (Homburg, Germany)
- 15.45 Significance of β -adrenoceptor autoantibodies in dilated cardiomyopathy: Effect of immunoadsorption
G. Wallukat, P. Reinke, W. V. Dörffel, H. P. Luther, S. B. Felix, G. Baumann (Berlin, Germany)

16.00-16.30 COFFEE BREAK

16.30-18.40 WORKSHOP 2

- Pathogenic idiotypes of autoantibodies in autoimmunity
*Chairpersons: Y. Shoenfeld (Tel-Aviv, Israel),
P. Youinou (Brest, France)*
- 16.30 Common infections, idiotypic dysregulation autoantibody spread phenomenon and induction of autoimmune diseases
Y. Shoenfeld (Tel-Aviv, Israel)
- 17.05 Genetic aspects of pathogenic idiotypes
P. Youinou, R. Le Corre, C. Jamin (Brest, France)
- 17.40 Natural autoantibodies and their physiologic serum inhibitors
M. Lorber, Z. Kra-Oz, Y. Shoenfeld (Haifa, Israel)
- 18.15 Dysregulation of the idiotypic network in systemic Lupus erythematosus and antiphospholipid syndrome
J. Kaufmann, D. Roggenbuck, S. Jahn, E. Gromnica-Ihle, T. Porstmann (Berlin, Germany)
- 18.25 Autoantibody dominance pattern following idiotypic manipulation of naive mice by immunization with different epitope specific anti-U1RNP antibodies
B. Gilburd, J. George, M. Damianovich, A. Doria, S. Todesco, Y. Shoenfeld (Tel-Aviv, Israel)

20.00 GET-TOGETHER

in Restaurant "Italienisches Dörfchen",
Theaterplatz 3, 01067 Dresden.
Please ask for your ticket at registration.

FRIDAY, 27.9.96

9.00-12.30 WORKSHOP 3, PART 1

- New aspects of autoantibody detection
*Chairpersons: R.-L. Humbel (Luxembourg),
B. Liedvogel (Freiburg, Germany),
A. Núñez-Roldán (Sevilla, Spain)*
- 9.00 Evolution in autoantibody testing: New autoantibodies, new pathologies, new methods?
R.-L. Humbel (Luxembourg)
- 9.35 Practical application of recombinant antigens in autoantibody testing
B. Liedvogel (Freiburg, Germany)

10.15-10.40 COFFEE BREAK

- 10.40 Identification of new autoantigens by using a human cDNA expression library
R. J. Garcia-Lozano, M. F. González-Escribano, I. Wichmann, A. Núñez-Roldán (Sevilla, Spain)

- 10.50 Evaluation of a new method for the detection of autoantibodies by indirect immunofluorescence (IIF)
C. Schwiebert, G. Daeschlein, V. Wolf, R. Lange (Berlin)
- 11.00 Detection of anti-neutrophil-cytoplasmic antibodies (ANCA) by indirect immunofluorescence (IIF) and enzyme-linked immunosorbent assay (ELISA) - A comparison of commercially available kits
W. Wetzel, G. Daeschlein, R. Lange (Berlin, Germany)
- 11.10 BIOCHIP combinations of tissue sections and antigen spots for indirect immunofluorescence: Primate intestine (endomysium) plus gliadin, rat kidney plus M2, primate stomach plus intrinsic factor
S. Proost, W. Schlumberger, W. Meyer, C. Dähnrich, E. Müller-Kunert, K. Sonnenberg, W. Stöcker (Groß Grönau, Germany)
- 11.20 Predictive value of antiribosomal P protein antibodies in patients with systemic lupus erythematosus. Development of two test systems
S. Ritzenthaler, R. Lange (Berlin, Germany)
- 11.30 Improved expression of human autoimmune cytochromes in insect cells
U. M. Zanger, H. Haubruck (Freiburg, Germany)
- 11.40 Line immunoassay (LIA) with recombinant autoantigens as an easy tool for sensitive detection of autoantibodies.
L. Meheus, F. De Keyser, E. M. Veys, A. Van den Broeke, A. Union, I. Vanneste, M. Cardinaels, D. D. Van Geel, R.-L. Humbel, A. Van de Voorde (Ghent, Belgium)
- 11.50 The SmD-C-terminal shares a conformational epitope recognized by the majority of SLE sera and reacts with anti-Sm, anti-dsDNA and anti-nucleosome antibodies
G. Riemekasten, J. Marell, G. Hausdorf, G. R. Burmester, F. Hiepe (Berlin, Germany)
- 12.00 Diagnosis of ophthalmopathy by a recombinant 64 kD protein
A. Kromminga, C. Nagel, F. Schuppert, R. Arndt (Hamburg, Germany)
- 12.10 Cochlear antigen in autoimmune inner ear disease
P. Tomasi, M. Y. Cao, N. Deggouj, M. Gersdorff (Brussels, Belgium)
- 12.20 The intracellular domain of IA-2 is most suitable for measuring IA-2 autoantibodies
L. Mauch, C. Krüger, R.-L. Humbel, H. Blietle, B. Krumm, B. Liedvogel, H. Haubruck (Freiburg, Germany)

12.30-14.00 LUNCH

Opportunity to view the posters and commercial exhibition

14.00-15.30 WORKSHOP 3, PART 2

New aspects of autoantibody detection: Autoantibodies and neurological diseases

Chairpersons: *A. Henneberg (Bad Nauheim, Germany),
A. J. Steck (Basel, Switzerland)*

- 14.00 Autoantibodies in diseases of the peripheral nervous system
A. J. Steck (Basel, Switzerland)
- 14.35 Antibrain antibodies in neuropsychiatric patients
A. Henneberg (Bad Nauheim, Germany)
- 15.10 Ganglioside autoantibodies and ELISA: A divorced couple ?
P. Schmit, R.-L. Humbel (Luxembourg)
- 15.20 Differentiation of brain tumors and cerebral metastases by antineuronal antibodies
F. Blaes, M. Wendel, M. Klotz (Homburg, Germany)

15.30-16.00 COFFEE BREAK

16.00-18.00 WORKSHOP 4

Silica exposure and autoimmunity

Chairpersons: *K. Conrad (Dresden, Germany),
G. Gregorini (Brescia, Italy)*

- 16.00 Prevalence and relevance of non-organ specific autoantibodies in silica exposed uranium miners
K. Conrad (Dresden, Germany)
- 16.35 Association between silica exposure and ANCA-associated vasculitis
G. Gregorini (Brescia, Italy)
- 17.10 Differential autoantibodies expression in silica-associated vasculitis and silica-associated systemic lupus erythematosus
J. F. Subra, C. Masson, F. Carrere, L. Perroux-Goumy, P. Reboul, G. Renier, J. P. Saint-André, A. Chevailler (Angers, France)
- 17.20 Prevalence of silicate-specific IgG antibodies in uranium mine workers with silicosis
G. Shen, M. S. Agiopian, E. Ojo-Amaize, K. Conrad, J. Mehlhorn (Santa Monica, USA)
- 17.30 Features of Sjögren's syndrome associated to occupational exposure to silica
I. Wichmann, J. Sánchez-Roman, A. Toral, N. Respaldiza, M. J. Castillo, C. Ocaña, A. Núñez-Roldán (Sevilla, Spain)
- 17.40 Autoantibodies, HLA alleles and TNF microsatellites in silica associated systemic sclerosis - hints of a different pathogenesis compared to idiopathic systemic sclerosis
K.-H. Frank, K. Conrad, M. Füssel, H.-P. Rihs, J. Mehlhorn (Dresden, Germany)

SATURDAY, 28.9.96

8.30-14.00 WORKSHOP 5 (IN GERMAN)

Autoantikörperdiagnostik

Chairpersons: R.-L. Humbel (Luxemburg),

K. Conrad (Dresden)

- 8.30 Strategie für den Einsatz "traditioneller" und moderner Methoden in der Autoantikörperdiagnostik
R.-L. Humbel (Luxemburg)
- 9.15 Bedeutung von Autoantikörpern in der prädiktiven Diagnostik von Autoimmun- und Tumorerkrankungen
K. Conrad (Dresden)
- 9.45 Ein neuer Enzymimmunoassay zum Nachweis von anti-Sp100-Antikörpern für den Einsatz in der PBC-Diagnostik
C. Hentschel (Zepernick)

10.00-10.30 KAFFEEPAUSE

Poster- und Industrieausstellung

Autoantikörper in der Diagnostik von Kollagenosen, Anti-Phospholipid-Syndrom und systemischen Vaskulitiden

10.30 F. Hiepe (Berlin):

Bedeutung von Autoantikörpern gegen dsDNA und Proteine von RNP-Komplexen (Sm, U1-RNP, Ro, La) in der Diagnostik des SLE

10.50

W. Schlumberger (Groß Grönau):

Prävalenz und Bedeutung von Autoantikörpern gegen ribosomale Phosphoproteine beim SLE.

11.10

K. Lütke (Dresden):

Antikörper gegen Phospholipide und

β 2-Glykoprotein I bei Kollagenosen und primärem

Anti-Phospholipid-Syndrom

11.30

B. Roch (Dresden):

Bedeutung der ANCA-Diagnostik in der Rheumatologie

12.00-13.00 KAFFEEPAUSE/IMBISS

Poster- und Industrieausstellung

13.00

Autoantikörper in der Diagnostik neurologischer Erkrankungen

A. Henneberg (Bad Nauheim), A.J. Steck (Basel)

13.30

Neue Autoantikörper mit diagnostischer Relevanz

R.-L. Humbel (Luxemburg), K. Conrad (Dresden)

POSTERS

WORKSHOP 1:

- A1** Competition of antiphospholipid antibodies and annexin V on apoptotic lymphocytes
A. Perniok, F. Wedekind, M. Schneider (Düsseldorf, Germany)
- A2** Prevalence of the various antiphospholipid antibodies (APA) in pregnancy
I. Malbohan, L. Fialová, L. Mikulíková, O. Benesová, A. Zwinger (Prague, Czech Republic)
- A3** Autoantibodies in patients with SLE during pregnancy
M. Lorber, D. Bejarano, Z. Kra-Oz, Z. Blumenfeld (Haifa, Israel)
- A4** High risk pregnancy in primary Sjögren's syndrome - successful management by plasmapheresis and dexamethasone
F. Hiepe, E. Feist, R. Chaoui, G. R. Burmester (Berlin, Germany)
- A5** Antibodies against ribosomal P protein: Prevalence and diagnostic significance in systemic Lupus erythematosus (SLE)
W. Schlumberger, K. Hartung, C. Weber, W. Stöcker, C. Dährnich, H. J. Schoop, J. R. Kalden, H. H. Peter, H. J. Lakomek, K. Lühke, C. Sachse, R. E. Schmidt, H. Deicher, and the members of the German SLE Study Group (Groß Grönau, Germany)
- A6** Relation of clinical and laboratory data to the presence of glycosylation defects in IgG in patients with mixed connective tissue disease
Y. Levy, J. George, B. Gilburd, M. Blank, Y. Shoenfeld (Tel-Hashomer, Israel)
- A7** Characteristic epitope recognition pattern of autoantibodies against eukaryotic ribosomal protein L7 in systemic autoimmune diseases
E. Neu, P. H. Hemmerich, H.-H. Peter, U. Krawinkel, A. H. von Mikecz (Konstanz, Germany)
- A8** Oxidized low density lipoprotein (oxLDL) but not LDL aggravates the manifestations of experimental antiphospholipid syndrome (APS)
J. George, M. Blank, M. Hojnik, E. Bar-Meir, T. Koike, E. Matsuura, M. Lorber, M. Aviram, Y. Shoenfeld (Tel-Hashomer, Israel)
- A9** The autoimmunity-inducing xenobiotic mercury interacts with the autoantigen fibrillarin and modifies its molecular and antigenic properties.
K. M. Pollard, D. K. Lee, C. A. Casiano, M. Blüthner, M. M. Johnston, E. M. Tan (La Jolla, USA)
- A10** Autoantibodies against Manganese-Superoxide-Dismutase generated during acute viral infection
F. Semrau, R.-J. Kühl, K. Ritter (Göttingen, Germany)
- A11** Epitope homologies between Manganese-Superoxide-Dismutase and Epstein-Barr-Virus leading to the occurrence of autoantibodies
A. Dalpke, F. Semrau, K. Ritter (Göttingen, Germany)
- A12** New p-ANCA subtypes in IBD and hepatobiliary diseases: possible nuclear antigen localization?
B. Terjung, U. Spengler, T. Sauerbruch (Bonn, Germany)
- A13** BPI - a new important autoantigen? (Preliminary results)
I. Böhme, S. Brömme, K. Lauerwald, H. Wache, W. Schütte (Halle, Germany)

- A14** Regeneration of cardiac function and size of patients with dilated cardiomyopathy under the influence of a cardiac assist device: Significance of β 1-adrenoceptor autoantibodies
G. Wallukat, J. Müller, H. P. Luther, R. Hetzer (Berlin, Germany)
- A15** Suprarenal autoantibodies as possible marker of adrenocortical failure in patients with autoimmune thyroiditis
I. Sterzl, V. Vavrejšnová, V. Zamrazil, B. Bendlová, R. Hampl (Prague, Czech Republic)

WORKSHOP 2:

- B1** Antigen binding and induction of experimental APS by anti-cardiolipin corresponding single chain Fv domains.
M. Blank, A. Waisman, E. Mozes, Y. Shoenfeld (Tel-Hashomer, Israel)
- B2** Pathogenic role of antiendothelial cell antibodies (AECA) in vasculitis: An idiopathic experimental model
M. Damianovich, B. Gilburg, J. George, N. Del Papa, A. Afek, I. Goldberg, Y. Kopolovich, D. Roth, G. Barkai, P. L. Meroni, Y. Shoenfeld (Tel-Hashomer, Israel)
- B3** Suppressive antibody activity in sera from patients with autoimmune diseases
J. Melero, D. Tarragó, A. Núñez-Roldán, S. Berta (Sevilla, Spain)
- B4** Human polyreactive IgM monoclonal antibodies with anti-idiotypic activity against autoreactive IgG
J. Melero, D. Tarragó, A. Núñez-Roldán, S. Berta (Sevilla, Spain)

WORKSHOP 3 / PART 1:

- C1** Immunofluorescence videomicroscopy and digital image processing
C. Gottschalk, K. Malberg, J. Morenz (Magdeburg, Germany)
- C2** Detection of IgG, IgM and IgA autoantibodies to β 2-glycoprotein I by ELISA
J. Bläser, R.-L. Humbel, N. J. Cook, G. Arnold, B. Liedvogel (Freiburg, Germany)
- C3** Development of an ELISA for detecting anti- β 2 glycoprotein I autoantibodies
P. Schmit, S. Regaia, V. Pierrard, M. Blum, S. Bastin, R.-L. Humbel (Luxembourg)
- C4** Anti-CENP-B response in sera of patients with possible development of systemic sclerosis (SSc) and persons at risk for SSc development
K. Conrad, J. Mehlhorn, C. Blasum, K.-H. Frank (Dresden, Germany)
- C5** Detection of rheumatoid factors: Sensitivity and specificity of a novel nephelometric assay, a classical agglutination test and two ELISAs.
A. J. van Houte, A. Zuurbier, H. R. van den Brink (Alkmaar, The Netherlands)
- C6** Evaluation of a test system for detection of autoantibodies to extractable nuclear antigens (ENA): ImmuDex. ANA/ENA EIA
H.-P. Jäkel, B. Renner (Neubrandenburg, Germany)
- C7** The diagnostic efficiency of Western blot in the detection of antinuclear antibodies (ANA)
C. Gottschalk, K. Malberg, H. Struy (Magdeburg, Germany)
- C8** Human cultivated keratinocytes (KC) as antigen source for autoantibody immunoblotting (IB) of bullous dermatoses
K. Malberg, R. Reißig, J. Schulz, H. Gollnick (Magdeburg, Germany)

- C9 **Actin, the main target antigen of Smooth-Muscle Antibodies (SMA), is the antigen of anti-neutrophil cytoplasmic antibodies in patients with autoimmune diseases.**
T. Orth, G. Gerken, K.-H. Meyer zum Büschenfelde, W.-J. Mayet (Mainz, Germany)
- C10 **Antibodies against the nuclear antigen Sp100 in patients with primary biliary cirrhosis can be detected on human neutrophil granulocytes**
T. Orth, G. Gerken, K.-H. Meyer zum Büschenfelde, W.-J. Mayet (Mainz, Germany)
- C11 **Antibodies against recombinant Sp100 antigen in patients with liver and systemic autoimmune diseases**
M. Klafki, K. Conrad, C. Hentschel, H. Klein, C. Seliger, K.-H. Frank (Dresden, Germany)
- C12 **Our experience with determination of IgG antibody to oxidized low-density lipoprotein**
I. Malbohan, S. Stipek, L. Fialová, L. Mikulíková, T. Zima (Prague, Czech Republic)
- C13 **Autoantibodies against a nuclear 56 kDa-protein: a marker for inflammatory muscle disease and Raynaud-syndrome?**
I. Greif, W. Bieger (München, Germany)
- C14 **Frequency of oncoprotein DEK autoantibodies in anti-chromatin positive sera**
P. Schmit, F. Goetzinger, R.-L. Humbel (Luxembourg)
- C15 **Autoantibodies against tumor suppressor gene product p53: Predictive markers for the development of lung cancer?**
K. Conrad, J. Mehlhorn, K.-H. Frank (Dresden, Germany)

WORKSHOP 3 / PART 2:

- C16 **Antibrain antibodies in the sera and cerebrospinal fluid from chronic schizophrenic patients**
K. Stacheder, H. Katila, D. van Kammen, A. Henneberg (Bad Nauheim, Germany)
- C17 **Brain-reactive autoantibodies (BRA) in connective tissue diseases**
J. Schulz, K. Malberg, M. Sailer, R. Keitel, C. Rosin, U. Jappe (Magdeburg, Germany)
- C18 **Brain antibodies in sera of patients suffering from schizophrenia or schizoaffective diseases but not from neurotic disorders - the result is independent from medication**
B. Yüsektepeli, M. Bauer, A. Henneberg (Ulm, Germany)
- C19 **Are there elevated antibody titre to fatty acids and cholesterol in multiple sclerosis?**
U. C. Preschke, A. Henneberg (Ulm, Germany)
- C20 **Antineuronal antibodies in the differentiation of lung cancer**
F. Blaes, M. Klotz, M. Wendel (Homburg, Germany)

WORKSHOP 4:

- D1 **Non-organ specific autoantibodies and systemic lupus erythematosus (SLE) in uranium miners after heavy exposure to quartz dust**
K. Conrad, J. Mehlhorn, K. Lühke, K.-H. Frank (Dresden, Germany)
- D2 **Scleroderma specific autoantibodies in sera of uranium miners and patients with idiopathic and xenobiotic induced systemic sclerosis (SSc)**
K. Conrad, J. Mehlhorn, L. Czirjak, K.-H. Frank (Dresden, Germany)
- D3 **Autoantibodies to Ro/SSA proteins in sera of quartz dust exposed uranium miners**
A. Wagner, K. Conrad, T. Dörner, J. Mehlhorn, K.-H. Frank (Dresden, Germany)

- D4 Occupational exposure to silica and levels of anti-myeloperoxidase antibodies**
I. Wichmann, J. Sánchez-Roman, J. Morales, M. J. Castillo, C. Ocaña, N. Respaldiza, A. Núñez-Roldán (Sevilla, Spain)
- D5 Uncommon autoantibody specificities in sera of quartz dust exposed uranium miners**
K. Conrad, J. Mehlhorn, T. Kempf, R.L. Humbel, K.-H. Frank (Dresden, Germany)
- D6 Silicate antibodies in patients with silicosis**
G. Shen, N. Lal, E. Ojo-Amoize, K.-H. Frank (Santa Monica, USA)
- D7 Associations between anti-centromere and anti-topoisomerase I responses and HLA class II alleles in silica associated systemic sclerosis**
K. Conrad, H.-P. Rihs, M. Füssel, J. Mehlhorn, K.-H. Frank (Dresden, Germany)

OTHER TOPICS:

- E1 Humoral hyperreactivity and cancer risk in asbestos workers**
L. Karabon, A. Laba, B. Wysoczńska, A. Lange (Wroclaw, Poland)
- E2 Soluble HLA-DR molecules (sHLA-DR) in patients with autoimmune diseases**
R. Claus, S. Hausmann, D. Meiske, I. Liebisch, H. Börner, M. Lafrenz, M. Lademann, G. Hauck, A. Schwager, A. Crusius, S. Liebe, K. Schumacher, M. Mix, S. Wegener (Rostock, Germany)
- E3 Structural characteristics of a panel of human autoreactive monoclonal antibodies**
J. Melero, A. Isabel, A. Núñez-Roldán, S. Berta (Sevilla, Spain)
- E4 Human lymphocytotoxic monoclonal autoantibodies from a highly sensitized renal dialysis patient**
J. Melero, D. Tarragó, G. I. J. Raúl, A. Núñez-Roldán, S. Berta (Sevilla, Spain)

MAIN SPEAKERS

Dr. K. Conrad

Technische Universität Dresden
Universitätsklinikum C. G. Carus
Institut für Immunologie
Postfach 800115
01101 Dresden / Germany

Dr. G. Gregorini

Cattedra di Nefrologia - Università di Brescia
Divisione di Nefrologia - Spedali Civili di Brescia
Piazza Spedali Civili, 1
25125 Brescia / Italy

Dr. H. Grosjean

Centre National de la Recherche Scientifique
Laboratoire d'Enzymologie et Biochimie
Structurales, Bât. 34
Avenue de la Terrasse
91198 Gif-sur-Yvette Cedex / France

PD Dr. A. Henneberg

Parkinson-Klinik Bad Nauheim
Franz-Groedel-Straße 6
61231 Bad Nauheim / Germany

Prof. Dr. R.-L. Humbel

Centre Hospitalier de Luxembourg
Laboratoire de Biochimie-Immunopathologie
4, rue Barblé
1210 Luxembourg

Prof. Dr. B. Liedvogel

elias Medizintechnik GmbH
Obere Hardtstraße 18
79114 Freiburg / Germany

Dr. M. Lorber

Dep. of Clinical Immunology
Rambam Medical Center
Haifa / Israel

Dr. K. M. Pollard

W. M. Keck Autoimmune Center
The Scripps Research Institute
10550 North Torrey Pines Road
La Jolla, CA 92037 / USA

Prof. Dr. A. Rosen

Johns Hopkins University
Division of Molecular and Clinical Rheumatology
School of Medicine, The Richard Starr Ross
Research Building
720 Rutland Avenue, Room 1059
Baltimore, MD 21205 / USA

Prof. Y. Shoenfeld

Chaim Sheba Medical Center
Department of Medicine "B"
Research Unit of Autoimmune Diseases
56121 Tel-Hashomer / Israel

Prof. Dr. A. J. Steck

Neurologische Universitätsklinik
Kantonsspital Basel
Petersgraben 4
4031 Basel / Switzerland

Prof. Dr. E. M. Tan

W. M. Keck Autoimmune Center
The Scripps Research Institute
10666 North Torrey Pines Road
La Jolla, CA 92037 / USA

Prof. P. Youinou

Centre Hospitalier Régional et Universitaire
Laboratoire d'Immunologie
B. P. 824
29609 Brest Cedex / France

GENERAL INFORMATION

Scientific Organiser

Dr. K. Conrad

Technische Universität Dresden

Universitätsklinikum Carl Gustav Carus

Institut für Immunologie

Postfach 800115

D-01101 Dresden

Telephone: +49-351-88 32 767

Telefax: +49-351-88 32 778

Scientific Committee

Dr. K. Conrad (Dresden, Germany)

PD Dr. A. Henneberg (Bad Nauheim, Germany)

Prof. Dr. R.-L. Humbel (Luxembourg)

Prof. Dr. Y. Shoenfeld (Tel-Aviv, Israel)

Prof. Dr. E. M. Tan (La Jolla, USA)

Organisation

Blackwell GCM

Gesellschaft für Congressmanagement,

Kommunikationskonzepte und Messen mbH

Monika Porstmann / Sarah Rogge

Riedemannweg 59

D-13627 Berlin

Telephone: +49-30-38370-751

Telefax: +49-30-38370-789

Venue

Hotel Bellevue Dresden

Grosse Meissner Strasse 15

D-01097 Dresden

Telephone on site: +49-351-81200

Symposium language

26/27 September: English

28 September: German

no simultaneous translation

Registration fee

Normal DM 350,00

Students/Residents DM 150,00

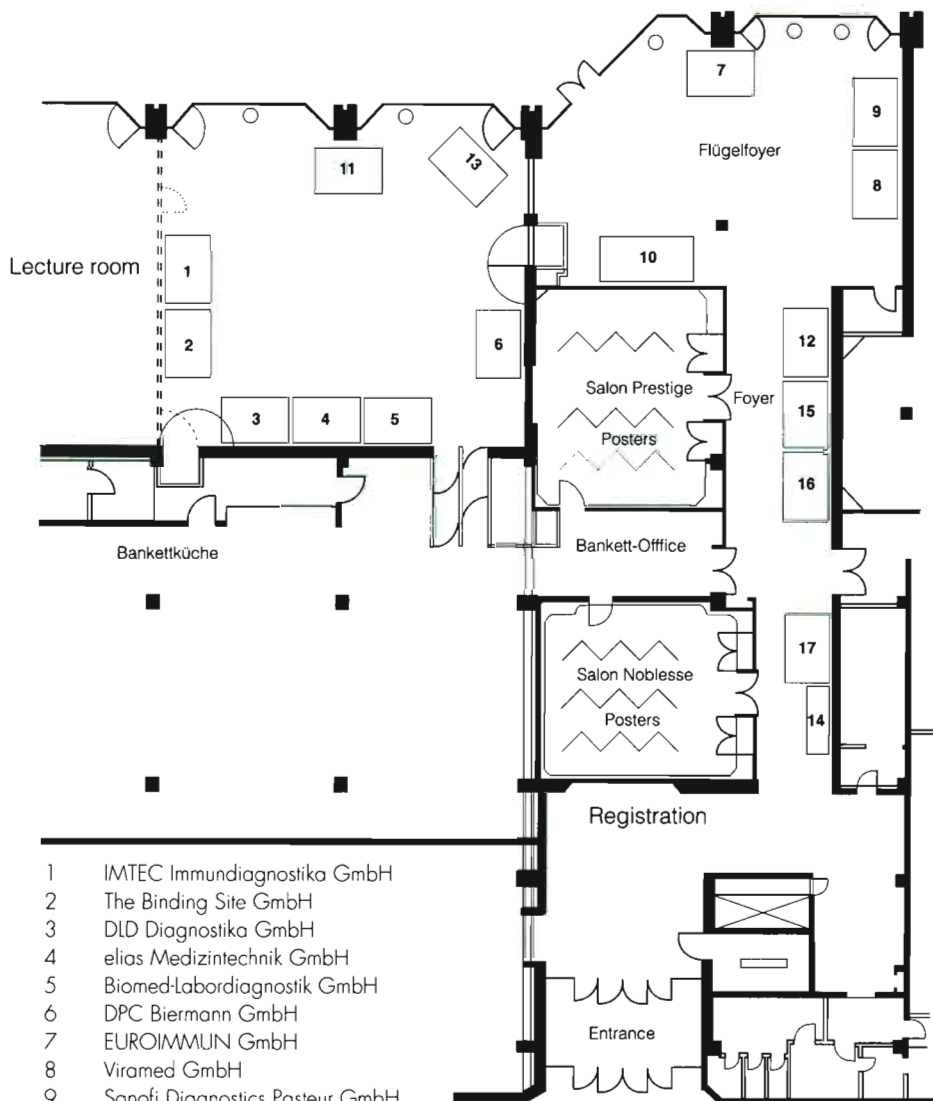
Day tickets 26/27 September DM 175,00

Day ticket 28 September DM 100,00

THE ORGANISERS WISH TO THANK THE FOLLOWING COMPANIES FOR THEIR GENEROUS SUPPORT:

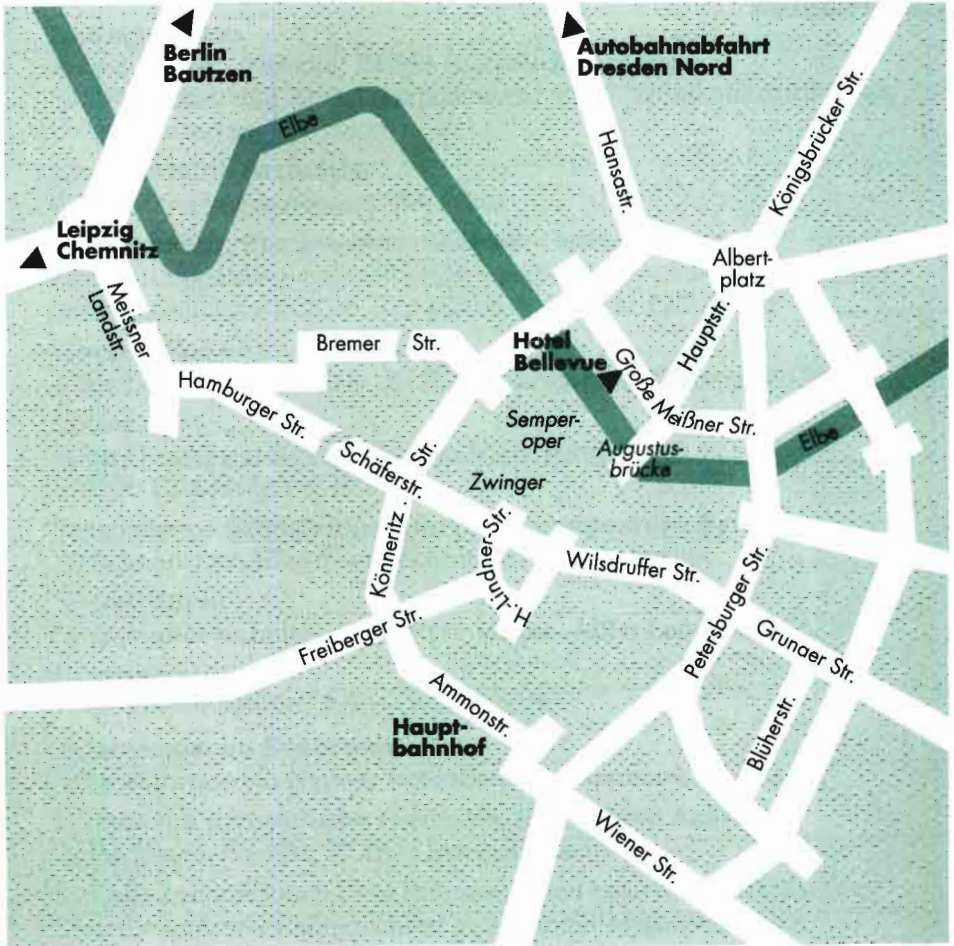
The Binding Site GmbH, Heidelberg
Biomed-Labordiagnostik GmbH, Oberschleißheim
DLD Diagnostika GmbH, Hamburg
DPC Biermann GmbH, Bad Nauheim
elias Medizintechnik GmbH, Freiburg
EUROIMMUN GmbH, Groß Grönau
Fresenius AG, GB Diagnostik, Bad Homburg
HAL Allergie GmbH, Düsseldorf
HiSS Diagnostics GmbH, Freiburg
IBL GmbH, Hamburg
IMTEC Immundiagnostika GmbH, Zepernick
LD Labor Diagnostika GmbH, Heiden
J. F. Lehmanns Buchhandlung, Dresden
ORGenTec Diagnostika GmbH, Mainz
Sanofi Diagnostics Pasteur GmbH, Freiburg
SCIMEDX Corporation, Denville, New Jersey/USA
SORIN Diagnostika GmbH, Düsseldorf
Viramed GmbH, Planegg

COMMERCIAL EXHIBITION



- 1 IMTEC Immundiagnostika GmbH
- 2 The Binding Site GmbH
- 3 DLD Diagnostika GmbH
- 4 elias Medizintechnik GmbH
- 5 Biomed-Labordiagnostik GmbH
- 6 DPC Biermann GmbH
- 7 EUROIMMUN GmbH
- 8 Viramed GmbH
- 9 Sanofi Diagnostics Pasteur GmbH
- 10 HISS Diagnostics GmbH
- 11 IBL GmbH
- 12 SORIN Diagnostika GmbH
- 13 ID Labor Diagnostika GmbH
- 14 J. F. Lehmanns Buchhandlung
- 15 Fresenius AG
- 16 ORGenTec Diagnostika GmbH
- 17 HAL Allergie GmbH

PLAN OF DRESDEN



Das Komplett-Programm zur Diagnostik von Autoimmun-Erkrankungen

Kollagenosen:

HEp-2 Zellen, Crithidia, ELISA (natürliche Antigene, ELISA-Screen und Einzelkomponenten) Anti-Cardiolipin Antikörper, ENA Ouchterlony

Rheumatoide Arthritis:

Ratten-Ösophagus Schnitt (Keratin)

Vaskulitiden, Panarteriitis nodosa, Colitis ulcerosa:

Ethanol-, formalin- und methanol-fixierte neutrophile Granulozyten zur Darstellung von c-, p- und x-ANCA, ELISA: PR3, MPO

Morbus Basedow, Hashimoto:

Affen-Schilddrüse Schnitt, ELISA: mikrosomal, Thyreoglobulin

Zöliakie:

Affen-Ösophagus Schnitt, Ratten-Niere Schnitt, ELISA: Gliadin IgA & IgG

Progressive Glomerulonephritis, Goodpasture Syndrom:

vorbehandelter Affen-Niere Schnitt (gebrauchsfertig)

Hepatitis:

Kombinationsschnitt Leber-Niere-Magen, Affen-Leber, ELISA: M2

Infertilität:

Affen-Hoden Schnitt, Affen-Ovar Schnitt

Neurologische Syndrome:

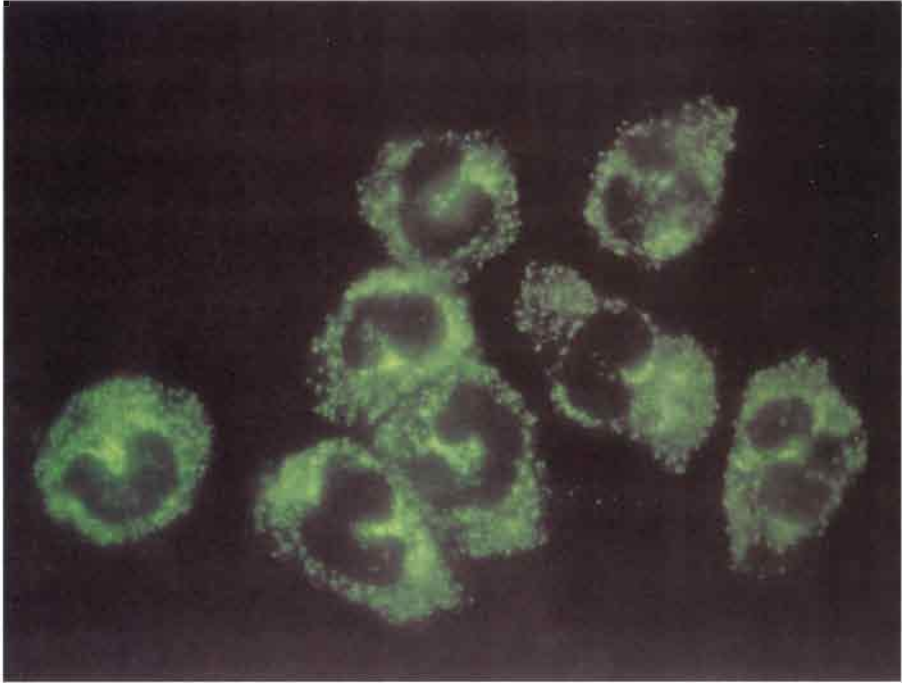
Affenschnitte von: Nervus Ischiaticus, Rückenmark, Kleinhirn

Chronisch atrophische Gastritis, Perniziöse Anämie:

Affen-Magen Schnitt, ELISA: Intrinsic Factor

Für alle Immunfluoreszenz-Präparate sind positive Kontrollseren und alle anderen Komponenten aufeinander abgestimmt und einzeln verfügbar....

Sollten Sie weitere Wünsche haben, so wenden Sie sich bitte an unseren Informationsstand.



Humane neutrophile Granulocyten, Autoantikörper gegen Proteinase 3 (cANCA); Wegener'sche Granulomatose

IMMUNFLUORESCENZ, ELISA, EUROBLLOT, EUROPLUS, BIOCHIPS, TITERPLANE-TECHNIK. Gewebeschnitte und Zellsubstrate für die **indirekte Immunfluoreszenz**; Objektträger mit BIOCHIPS und BIOCHIP-MOSAIKEN aus Schilddrüse, Nebenschilddrüse, Pankreas, Nebenniere, Ovar, Plazenta, Testis, Spermatozoen, Hypophyse, Hypothalamus, Großhirn, Kleinhirn, Substantia nigra, Nerven, Auge, Granulocyten, Lymphocyten, Monocyten, Thrombocyten, Niere, Lunge, Leber, Mundschleimhaut, Magencorpus, Magenantrum, Jejunum, Colon, Mamma, Tränendrüse, Parotis, Prostata, Vesicula seminalis, Skelettmuskel, Herzmuskel, Thymus, Knorpelgewebe, Epidermis, Ösophagus, Zunge, Lippe, Melanocyten, HEP-2-Zellen, Rattenniere, Mäuseniere, Rattenmagen, Mäusemagen, Crithidia luciliae und andere. Adenoviren, Bordetella pertussis*, Bordetella pertussis*, Borrelia burgdorferi (Stämme D, CH, USA), Candida albicans, glabrata, krusei, tropicalis, parapsilosis, Chlamydia pneumoniae, Chlamydia trachomatis*, CMV*, Coxsackieviren (A7, A9, A16, B1 bis B6), EBV-CA, EBNA, EBV-EA, Echinokokkus granulosus, Haemophilus influenzae, Helicobacter pylori, HIV-1*, HIV-2*, HHV-6, HSV-1, HSV-2, Influenza A, (Stämme Shangdong, Singapur und Beijing), Influenza B (Stamm Panama), Legionella pneumophila 1-14, Listeria monocytogenes (1/2a und 4b), Masern, Mumps, Parainfluenza 1-4, RSV, Toxoplasma gondii*, Treponema pallidum*, VZV, Yersinia enterocolitica* (0:3, 0:4, 0:6 und 0:9). **ELISA**: Antikörper gegen ENA (Profil, Pool), SS-A, SS-B, Sm, RNP, Scl-70, Jo-1, Cardiollipin, Phosphatidylserin, AMA-M2, AMA-M4, AMA-M9, ribosomales P-Protein, Kollagen (Profil I-VI, Pool), Gliadin, Intrinsic Faktor, Schilddrüsen-Peroxidase, Thyreoglobulin, ANCA-Profil: PR3, BP1, MPO, Elastase, Kathepsin-G, Lysozym, Laktoferrin, glomeruläre Basalmembran GBM, Histone, dsDNS, ssDNS, RNS, Helicobacter pylori, Borrelia burgdorferi, HSV-1, HSV-2, CMV, Masern, Mumps, VZV, RSV, Influenza A und B, Parainfluenza 1 bis 3, Adenoviren. **EUROBLLOT**: Antikörper gegen SS-A, SS-B, Scl-70, Sm, RNP, Jo-1, AMA-M2, AMA-M4, AMA-M9.